

# OLATHE PARKS MAINTENANCE FACILITY

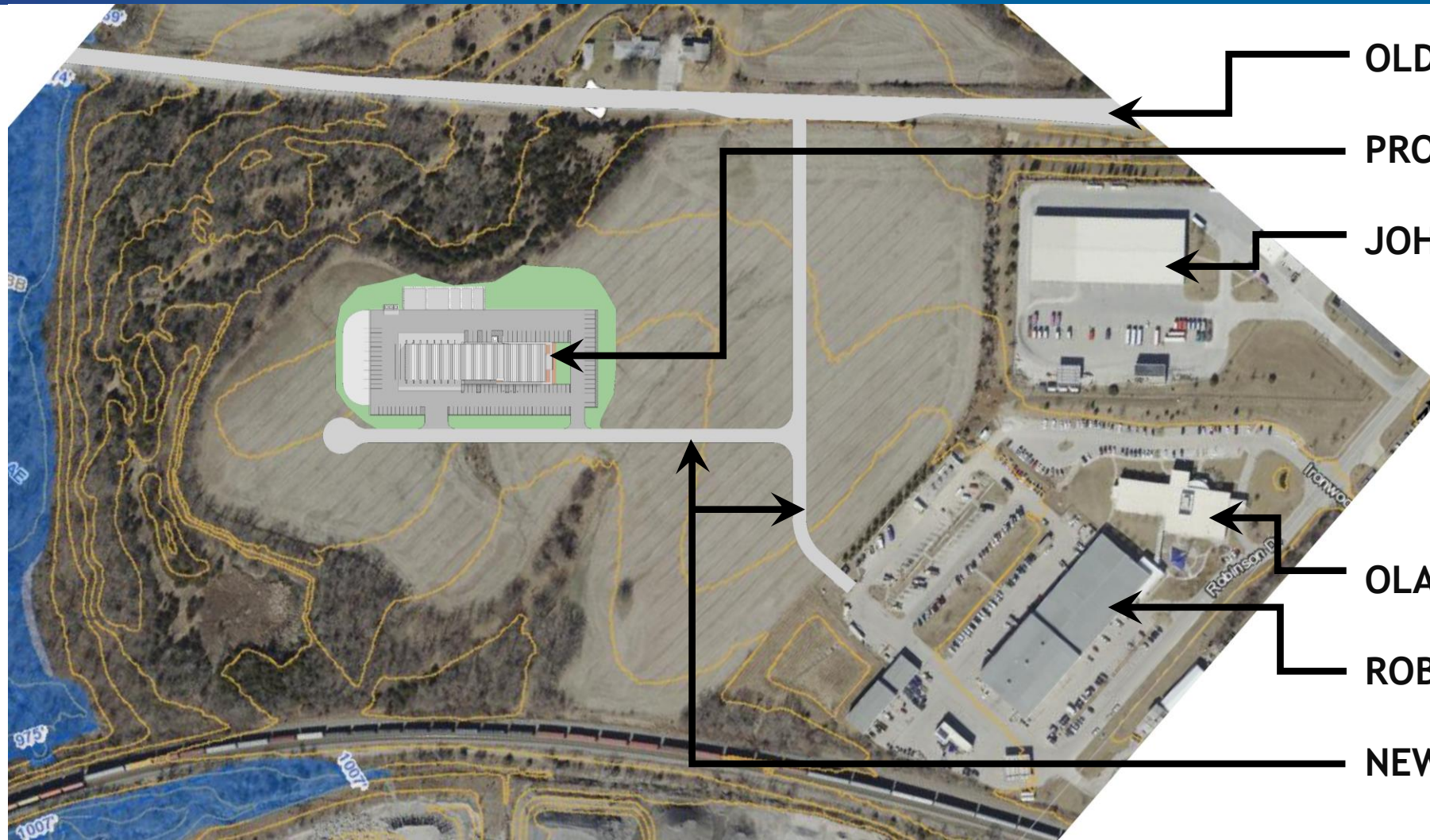
CITY COUNCIL PRESENTATION

May 7, 2019

Chad Foster, AIA

Senior Building Design Project Manager





OLD 56 HIGHWAY

PROJECT SITE

JOHNSON COUNTY TRANSIT

OLATHE PUBLIC WORKS

ROBINSON DRIVE

NEW DRIVES

 PROJECT SITE PLAN



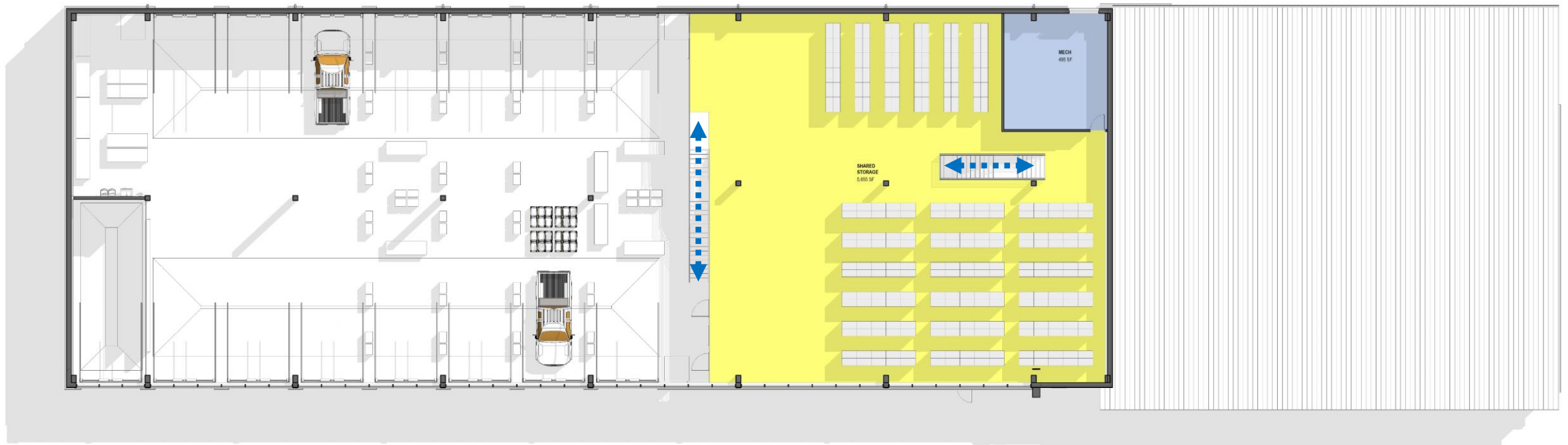


Garage Bays

Storage/Shop

Office/Meeting

# **FIRST FLOOR PLAN**



Garage Bays

Storage/Shop

Office/Meeting

➡ **MEZZANINE FLOOR PLAN**

SPLIT FACE CMU

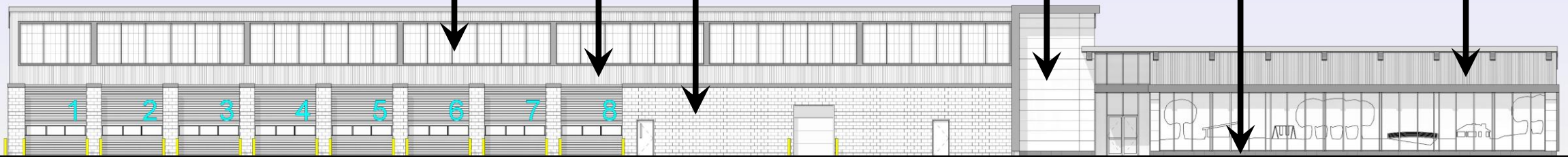
METAL PANEL SYSTEM

KALWALL TRANSLUCENT PANEL  
DAYLIGHT SYSTEM

METAL PANEL SYSTEM

BURNISHED BLOCK BASE

INSULATED  
WALL PANEL



Garage Bays

Storage/Shop

Office/Meeting

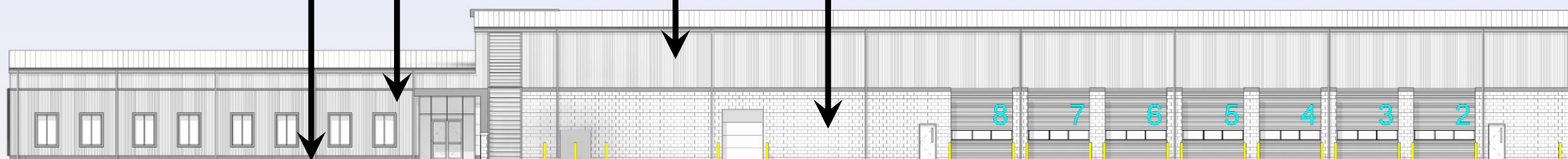
**SOUTH ELEVATION**

METAL PANEL  
SYSTEM

BURNISHED BLOCK  
BASE

METAL PANEL SYSTEM

SPLIT FACE CMU



Office/Meeting

Storage/Shop

Garage Bays

NORTH ELEVATION

BURNISHED BLOCK BASE

METAL PANEL  
SYSTEM

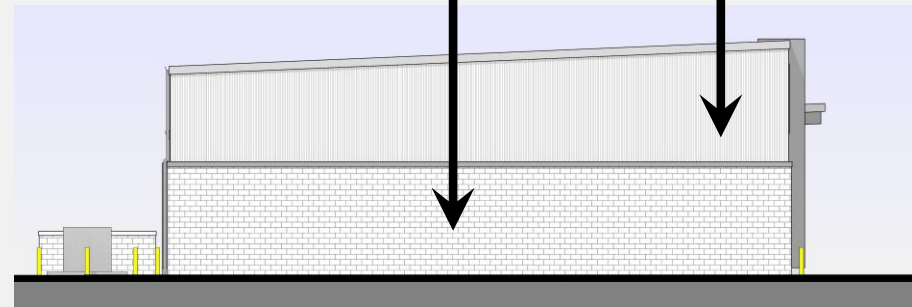
INSULATED  
WALL PANEL



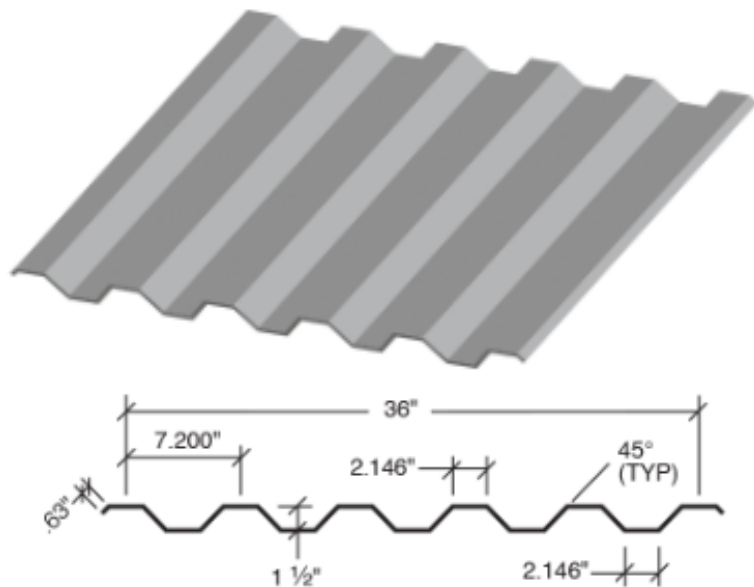
EAST ELEVATION

METAL PANEL SYSTEM

SPLIT FACED CMU



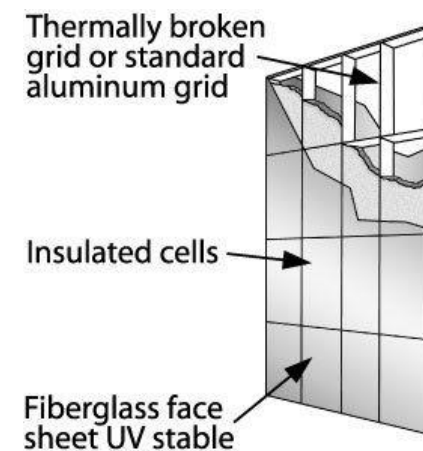
WEST ELEVATION



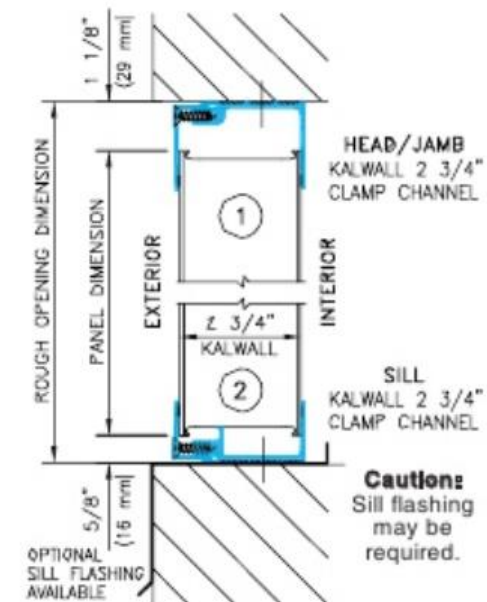
**METAL PANEL SYSTEM**



**INSULATED METAL PANEL SYSTEM**



**KALWALL TRANSLUCENT PANEL DAYLIGHTING SYSTEM**



## **EXTERIOR MATERIAL PALLET**





BURNISHED BLOCK MASONRY

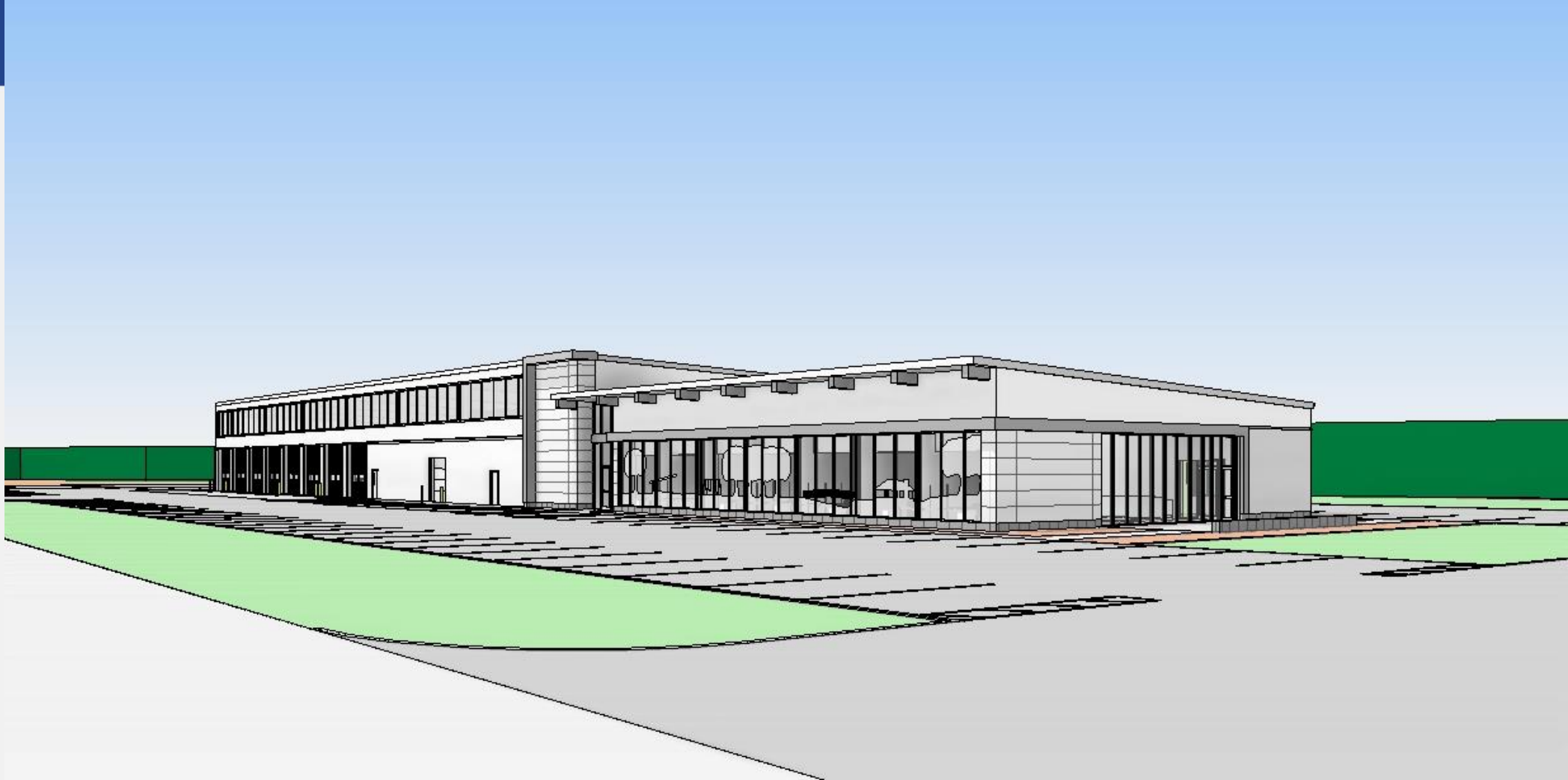


SPLIT FACED CMU MASONRY

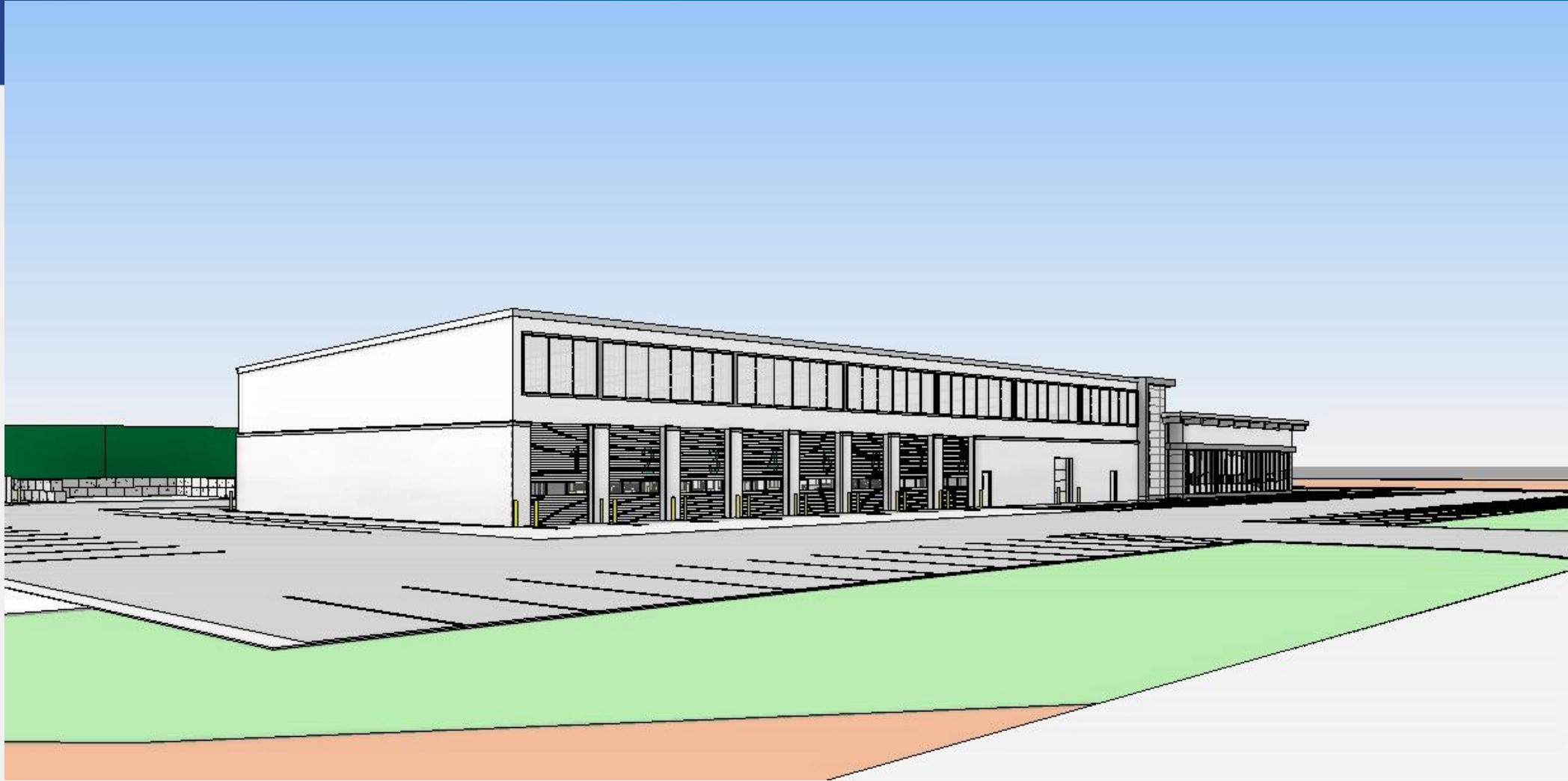
## EXTERIOR MATERIAL PALLET

## **PROJECT SCHEDULE MILESTONES:**

- **Neighborhood Meeting** **May 14, 2019**
- **Complete Package 1 Design** **Spring 2019**
  - Site Infrastructure & Structural Steel
- **Council Approval of GMP Contract for Package 1** **Summer 2019**
- **Complete package 2 Design** **Summer 2019**
  - Building Construction
- **Council Approval of GPM Contract for Package 2** **Summer 2019**
- **Substantial Completion/Occupancy/Move-In** **April 2020**



EXTERIOR PERSPECTIVE



EXTERIOR PERSPECTIVE





EXTERIOR PERSPECTIVE

# QUESTIONS: