

EXHIBIT "B"
SANITARY SEWER VACATION
PART OF THE S.E. 1/4 SECTION 1, T. 14 S., R. 23 E.,
BEING PART OF LOT 1, GARMIN PROPERTIES PHASE 1
IN THE CITY OF OLATHE, JOHNSON COUNTY, KANSAS.

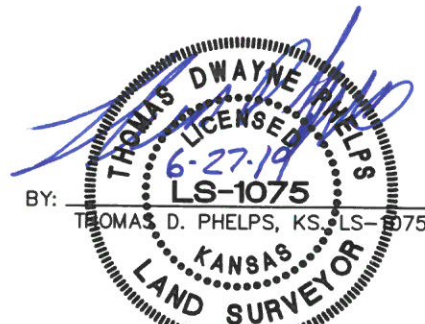
DESCRIPTION:

ALL THAT PART OF LOT 1, GARMIN PROPERTIES PHASE 1, A PLATTED SUBDIVISION OF LAND, IN THE SOUTHEAST QUARTER OF SECTION 1, TOWNSHIP 14 SOUTH, RANGE 23 EAST, IN THE CITY OF OLATHE, JOHNSON COUNTY, KANSAS, BEING MORE PARTICULARLY DESCRIBED AS FOLLOWS:

COMMENCING AT THE NORTHWEST PLAT CORNER OF SAID GARMIN PROPERTIES PHASE 1, SAID CORNER ALSO BEING ON THE EAST RIGHT-OF-WAY LINE OF MAHAFFIE CIRCLE, AS NOW ESTABLISHED; THENCE N 19°43'32" E, ALONG THE NORTH PLAT LINE OF SAID GARMIN PROPERTIES PHASE 1, A DISTANCE OF 46.92 FEET; THENCE N 65°02'00" E, CONTINUING ALONG SAID NORTH PLAT LINE, A DISTANCE OF 323.91 FEET TO THE NORTHWEST CORNER OF AN EXISTING 15-FOOT WIDE SEWER EASEMENT AS RECORDED IN THE JOHNSON COUNTY REGISTER OF DEEDS OFFICE IN BOOK 3075 AT PAGE 730, SAID POINT ALSO BEING THE POINT OF BEGINNING OF THE SANITARY SEWER EASEMENT TO BE VACATED HERIN; THENCE N 65°02'00" E, CONTINUING ALONG SAID NORTH PLAT LINE, AND THE NORTH LINE OF SAID 15-FOOT WIDE SEWER EASEMENT, A DISTANCE OF 0.23 FEET TO THE NORTHEAST CORNER OF SAID 15-FOOT WIDE SEWER EASEMENT; THENCE S 42°45'50" E, ALONG THE EAST LINE OF SAID 15-FOOT WIDE SEWER EASEMENT, A DISTANCE OF 293.33 FEET TO THE SOUTHEAST CORNER OF SAID 15-FOOT WIDE SEWER EASEMENT; THENCE S 47°14'10" W, ALONG THE SOUTH LINE OF SAID 15-FOOT WIDE SEWER EASEMENT, A DISTANCE OF 15.00 FEET TO THE SOUTHWEST CORNER OF SAID 15-FOOT WIDE SEWER EASEMENT; THENCE NORTH, SOUTHWEST, NORTH, NORTHEAST, AND NORTHERLY ALONG THE WEST LINE OF SAID 15-FOOT WIDE SEWER EASEMENT, FOR THE FOLLOWING SIX (6) COURSES; THENCE N 42°45'50" W, A DISTANCE OF 70.74 FEET; THENCE S 14°14'04" W, A DISTANCE OF 22.67 FEET TO A POINT ON THE EAST LINE OF LOT 7, GATEWAY BUSINESS PARK FIRST PLAT, A PLATTED SUBDIVISION OF LAND IN THE CITY OF OLATHE, JOHNSON COUNTY, KANSAS, AS RECORDED IN THE JOHNSON COUNTY REGISTER OF DEEDS OFFICE IN BOOK 74 AT PAGE 41; THENCE N 34°34'49" W, ALONG THE EAST LINE OF SAID LOT 7, A DISTANCE OF 19.93 FEET; THENCE N 14°14'04" E, A DISTANCE OF 19.29 FEET; THENCE N 42°45'50" W, A DISTANCE OF 101.98 FEET TO A POINT ON THE EAST LINE OF SAID LOT 7; THENCE N 34°34'49" W, ALONG THE EAST LINE OF SAID LOT 7, A DISTANCE OF 103.86 TO THE POINT OF BEGINNING.

THE ABOVE DESCRIBED SANITARY SEWER EASEMENT TO BE VACATED CONTAINS 3,956 SQUARE FEET, MORE OR LESS, OF PLATTED LAND.

I HEREBY CERTIFY THAT THIS REAL
PROPERTY LEGAL DESCRIPTION HAS
BEEN PREPARED BY ME OR UNDER
MY DIRECT SUPERVISION.



\\PHELPS-SERVER\Projects\P\170620\Office\Easements\sanitary easements\sanitary exhibits.dwg Layout:LOT 7 VAC 1 Jun 27, 2019 5:34pm SHEET 1 OF 2



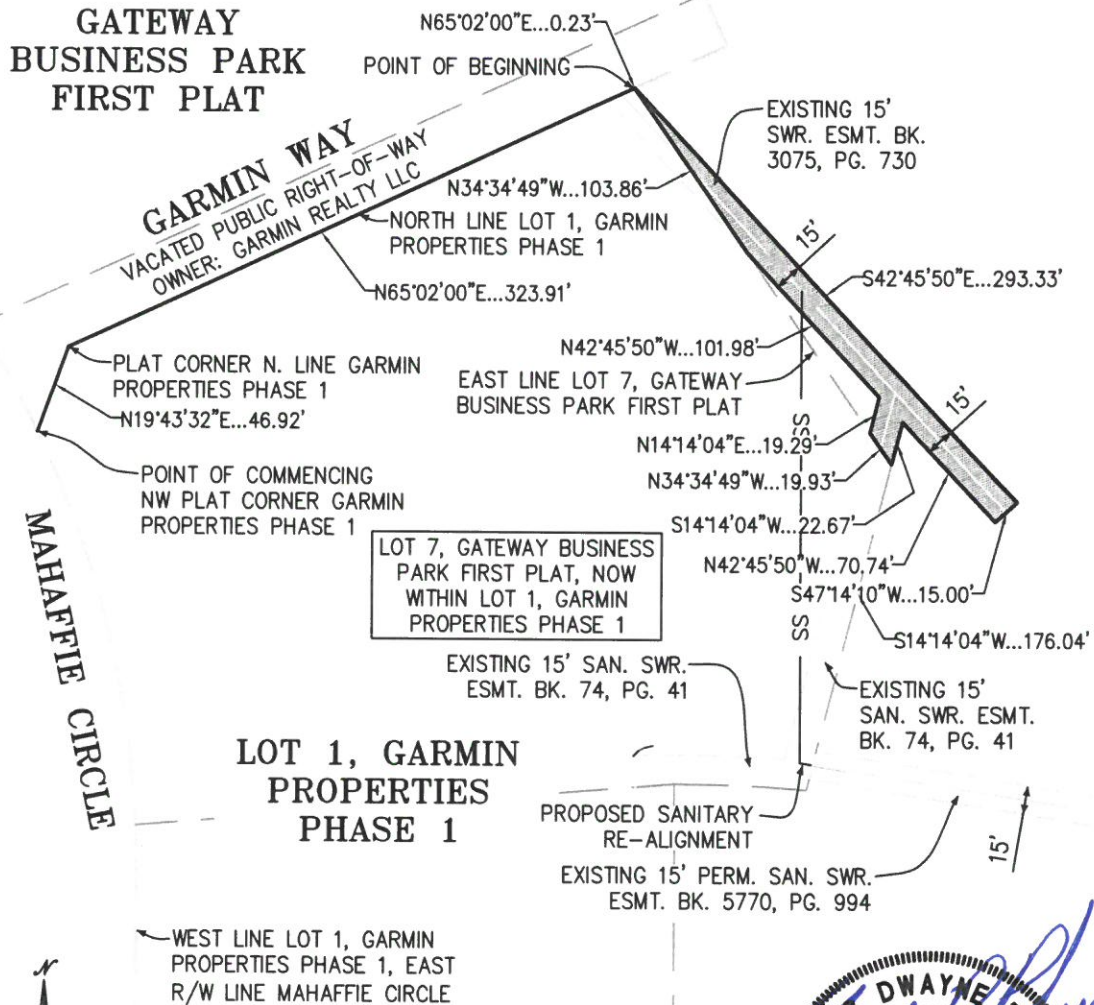
PLANNING PHELPS ENGINEERING, INC (913) 393-1155
ENGINEERING 1270 N. Winchester Fax (913) 393-1166
IMPLEMENTATION Olathe, Kansas 66061 www.phelpsenengineering.com

CERTIFICATE OF AUTHORIZATION KANSAS LAND
SURVEYING - LS-82 PROJECT NO. 170620
ENGINEERING - E-391 DATE: 4/29/2019
CERTIFICATE OF AUTHORIZATION MISSOURI
LAND SURVEYING-2007001128 BY: DWJ
ENGINEERING-2007005058

EXHIBIT "B"

SANITARY SEWER VACATION

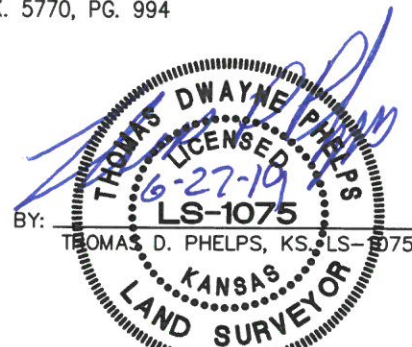
PART OF THE S.E. 1/4 SECTION 1, T. 14 S., R. 23 E., BEING PART OF LOT 1, GARMIN PROPERTIES PHASE 1 IN THE CITY OF OLATHE, JOHNSON COUNTY, KANSAS.



SCALE: 1"=100'



I HEREBY CERTIFY THAT THIS REAL PROPERTY LEGAL DESCRIPTION HAS BEEN PREPARED BY ME OR UNDER MY DIRECT SUPERVISION.



\\PHELPS-SERVER\Projects\P\170620\Office\Easements\sanitary easements\sanitary exhibits.dwg Layout: LOT 7 VAC 2 Jun 27, 2019 3:34pm SHEET 2 OF 2



PLANNING
ENGINEERING
IMPLEMENTATION

PHELPS ENGINEERING, INC (913) 393-1155
1270 N. Winchester Fax (913) 393-1166
Olathe, Kansas 66061 www.phelpsengineering.com

CERTIFICATE OF AUTHORIZATION KANSAS LAND
SURVEYING - LS-82
ENGINEERING - E-391
CERTIFICATE OF AUTHORIZATION MISSOURI
LAND SURVEYING-2007001128
ENGINEERING-2007005058

PROJECT NO. 170620
DATE: 4/29/2019
BY: DWJ