

EXHIBIT "C"
SANITARY SEWER VACATION
PART OF THE S.E. 1/4 SECTION 1, T. 14 S., R. 23 E.,
BEING PART OF LOT 1, GARMIN PROPERTIES PHASE 1
IN THE CITY OF OLATHE, JOHNSON COUNTY, KANSAS.

DESCRIPTION:

ALL THAT PART OF LOT 1, GARMIN PROPERTIES PHASE 1, A PLATTED SUBDIVISION OF LAND, IN THE SOUTHEAST QUARTER OF SECTION 1, TOWNSHIP 14 SOUTH, RANGE 23 EAST, IN THE CITY OF OLATHE, JOHNSON COUNTY, KANSAS, BEING MORE PARTICULARLY DESCRIBED AS FOLLOWS:

COMMENCING AT THE NORTHWEST PLAT CORNER OF SAID GARMIN PROPERTIES PHASE 1, SAID CORNER ALSO BEING ON THE EAST RIGHT-OF-WAY LINE OF MAHAFFIE CIRCLE, AS NOW ESTABLISHED; THENCE N 19°43'32" E, ALONG THE NORTH PLAT LINE OF SAID GARMIN PROPERTIES PHASE 1, A DISTANCE OF 46.92 FEET; THENCE N 65°02'00" E, CONTINUING ALONG SAID NORTH PLAT LINE, A DISTANCE OF 308.38 FEET TO THE NORTHWEST CORNER OF AN EXISTING SANITARY SEWER EASEMENT AS SHOWN ON LOT 7, GATEWAY BUSINESS PARK FIRST PLAT, A PLATTED SUBDIVISION OF LAND IN THE CITY OF OLATHE, JOHNSON COUNTY, KANSAS, AS RECORDED IN THE JOHNSON COUNTY REGISTER OF DEEDS OFFICE IN BOOK 74 AT PAGE 41, SAID NORTHEAST CORNER ALSO BEING THE FIRST POINT OF BEGINNING OF THE SANITARY SEWER EASEMENT TO BE VACATED HEREIN; THENCE N 65°02'00" E, ALONG SAID NORTH PLAT LINE, THE NORTH LINE OF SAID LOT 7 AND THE NORTH LINE OF SAID EXISTING SANITARY SEWER EASEMENT, A DISTANCE OF 15.53 TO THE NORTHEAST CORNER OF SAID EXISTING SANITARY SEWER EASEMENT AND SAID LOT 7; THENCE S 34°34'49" E, ALONG THE EAST LINE OF SAID EXISTING SANITARY SEWER EASEMENT AND SAID LOT 7, A DISTANCE OF 103.86 TO A POINT HEREAFTER KNOWN AS POINT "A"; THENCE N 42°45'50" W, ALONG THE WEST LINE OF SAID EXISTING SANITARY SEWER EASEMENT, A DISTANCE OF 107.55 FEET TO THE FIRST POINT OF BEGINNING.

AND ALSO:

COMMENCING FROM AFOREMENTIONED POINT "A"; THENCE S 34°34'49" E, ALONG THE EAST LINE OF SAID LOT 7, A DISTANCE OF 113.64 FEET TO THE NORTHWEST CORNER OF AND EXISTING 15' SANITARY SEWER EASEMENT AS SHOWN ON SAID LOT 7, SAID NORTHWEST CORNER ALSO BEING THE SECOND POINT OF BEGINNING; THENCE SOUTHEASTERLY, SOUTHWESTERLY AND WESTERLY ALONG THE EAST AND SOUTH LIES OF SAID LOT 7 AND SAID EXISTING 15' SANITARY SEWER EASEMENT FOR THE FOLLOWING FOUR (4) COURSES; THENCE S 34°34'49" E, A DISTANCE OF 19.93 FEET; THENCE S 14°14'04" W, A DISTANCE OF 176.04; THENCE ON A CURVE TO THE LEFT, SAID CURVE HAVING A RADIUS OF 800.00 FEET AND INITIAL TANGENT BEARING OF N85°14'06"W, AN ARC DISTANCE OF 69.00 FEET; THENCE S 85°19'50" W, A DISTANCE OF 20.06 FEET; THENCE N 4°40'10" W, A DISTANCE OF 16.35 FEET; THENCE ON A CURVE TO THE RIGHT, SAID CURVE HAVING AN INITIAL TANGENT BEARING OF N88°19'38"E AND A RADIUS OF 815.00 FEET, AN ARC DISTANCE OF 78.85 FEET; THENCE N 14°14'04" E, A DISTANCE OF 176.56 FEET TO THE SECOND POINT OF BEGINNING.

THE ABOVE DESCRIBED SANITARY SEWER EASEMENT TO BE VACATED CONTAINS 4,714 SQUARE FEET, MORE OR LESS, OF PLATTED LAND.

I HEREBY CERTIFY THAT THIS REAL
PROPERTY LEGAL DESCRIPTION HAS
BEEN PREPARED BY ME OR UNDER
MY DIRECT SUPERVISION.

BY:

THOMAS D. PHELPS, KS. LS-1075

KANSAS
LAND SURVEYOR

\\PHELPS-SERVER\Projects\PA\170620\Office\Easements\sanitary easements\sanitary exhibits.dwg Layout:BK PG VAC.1 Jun 27, 2019 3:34pm SHEET 1 OF 2



PLANNING
ENGINEERING
IMPLEMENTATION

PHELPS ENGINEERING, INC (913) 393-1155
1270 N. Winchester Fax (913) 393-1166
Olathe, Kansas 66061 www.phelpsengineering.com

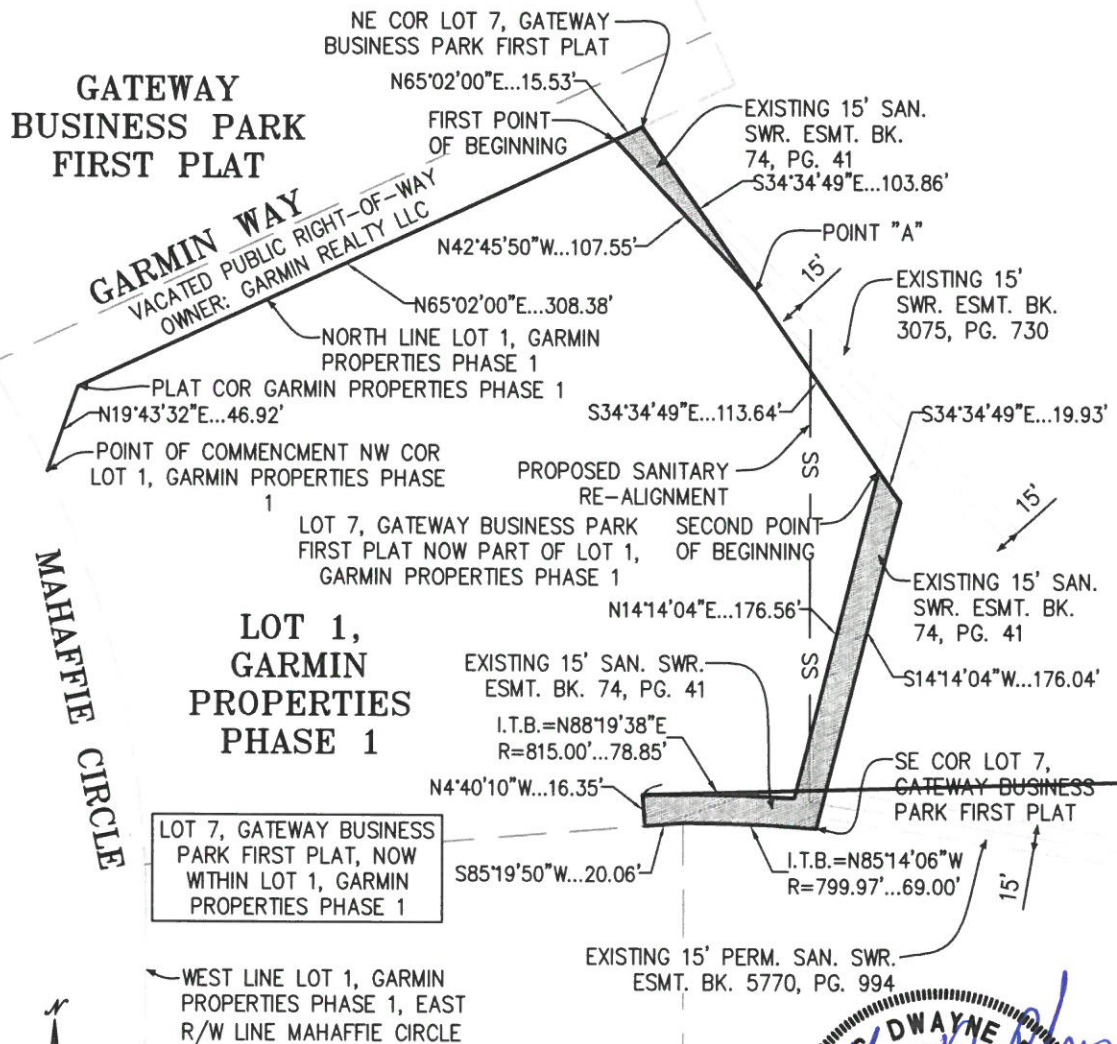
CERTIFICATE OF AUTHORIZATION KANSAS LAND
SURVEYING - LS-82
ENGINEERING - E-391
CERTIFICATE OF AUTHORIZATION MISSOURI
LAND SURVEYING-2007001128
ENGINEERING-2007005058

PROJECT NO. 170620
DATE: 4/29/2019
BY: DWJ

EXHIBIT "C"

SANITARY SEWER VACATION

PART OF THE S.E. 1/4 SECTION 1, T. 14 S., R. 23 E.,
BEING PART OF LOT 1, GARMIN PROPERTIES PHASE 1
IN THE CITY OF OLATHE, JOHNSON COUNTY, KANSAS.

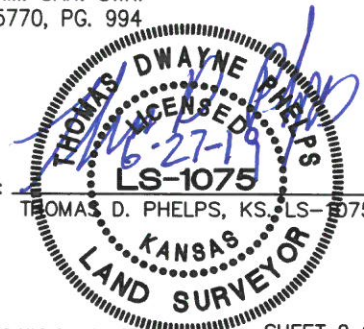


SCALE: 1"=100'



I HEREBY CERTIFY THAT THIS REAL PROPERTY LEGAL DESCRIPTION HAS BEEN PREPARED BY ME OR UNDER MY DIRECT SUPERVISION.

BY: **THOMAS D. PHELPS, KS. LS-1075**



\\PHELPS-SERVER\Projects\170620\Office\Easements\sanitary easements\sanitary exhibits.dwg Layout: BK PG VAC 2 Jun 27, 2019 3:35pm SHEET 2 OF 2



PLANNING
ENGINEERING
IMPLEMENTATION

PHELPS ENGINEERING, INC (913) 393-1155
1270 N. Winchester Fax (913) 393-1166
Olathe, Kansas 66061 www.phelpsengineering.com

CERTIFICATE OF AUTHORIZATION KANSAS LAND SURVEYING - LS-82
ENGINEERING - E-391
CERTIFICATE OF AUTHORIZATION MISSOURI LAND SURVEYING-2007001128
ENGINEERING-2007005058

PROJECT NO. 170620
DATE: 4/29/2019
BY: DWJ