

**EXHIBIT "D"**  
**WATERLINE EASEMENT VACATION**  
**PART OF THE S.E. 1/4 SECTION 1, T. 14 S., R. 23 E.,**  
**BEING PART OF LOT 1, GARMIN PROPERTIES PHASE 1**  
**IN THE CITY OF OLATHE, JOHNSON COUNTY, KANSAS.**

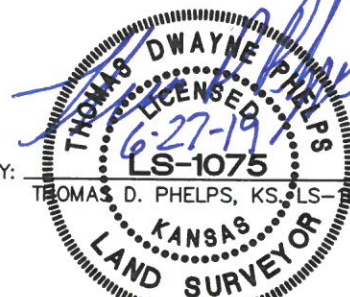
DESCRIPTION:

ALL THAT PART OF LOT 1, GARMIN PROPERTIES PHASE 1, A PLATTED SUBDIVISION OF LAND IN PART OF THE SOUTHEAST QUARTER OF SECTION 1, TOWNSHIP 14 SOUTH, RANGE 23 EAST, IN THE CITY OF OLATHE, JOHNSON COUNTY, KANSAS, BEING MORE PARTICULARLY DESCRIBED AS FOLLOWS:

COMMENCING AT THE SOUTHEAST CORNER OF THE SOUTHEAST QUARTER OF SAID SECTION 1; THENCE S 89°49'23" W ALONG THE SOUTH LINE OF THE SOUTHEAST QUARTER OF SAID SECTION 1, A DISTANCE OF 1673.16 FEET; THENCE N 0°10'37" W, A DISTANCE OF 376.32 FEET TO A POINT ON THE NORTHERLY LINE OF A 15.00 FOOT WIDE WATERLINE EASEMENT AS SHOWN ON SAID GARMIN PROPERTIES PHASE 1, SAID POINT BEING THE POINT OF BEGINNING; THENCE N 82°08'30" W, A DISTANCE OF 15.00 FEET; THENCE NORTHERLY, EASTERLY AND SOUTHERLY ALONG THE NORTHERLY LINE OF SAID 15.00 FOOT WIDE WATERLINE EASEMENT; THENCE N 7°51'30" E, A DISTANCE OF 74.27 FEET; THENCE S 82°08'30" E, A DISTANCE OF 15.00 FEET; THENCE S 7°51'30" W, A DISTANCE OF 74.27 FEET TO THE POINT OF BEGINNING CONTAINING 1,114 SQUARE FEET, MORE OR LESS, OF EXISTING WATERLINE EASEMENT TO BE VACATED.

I HEREBY CERTIFY THAT THIS REAL  
PROPERTY LEGAL DESCRIPTION HAS  
BEEN PREPARED BY ME OR UNDER  
MY DIRECT SUPERVISION.

BY:   
THOMAS D. PHELPS, KS. LS-1075



\\PHELPS-SERVER\Projects\P\170620\Office\Easements\waterline easements note to dwj dwg needs to be updated\waterline easement.dwg Lay SHEET 1 OF 2 2019 - 3:37pm



PLANNING  
ENGINEERING  
IMPLEMENTATION

PHELPS ENGINEERING, INC (913) 393-1155  
1270 N. Winchester Fax (913) 393-1166  
Olathe, Kansas 66061 www.phelpsengineering.com

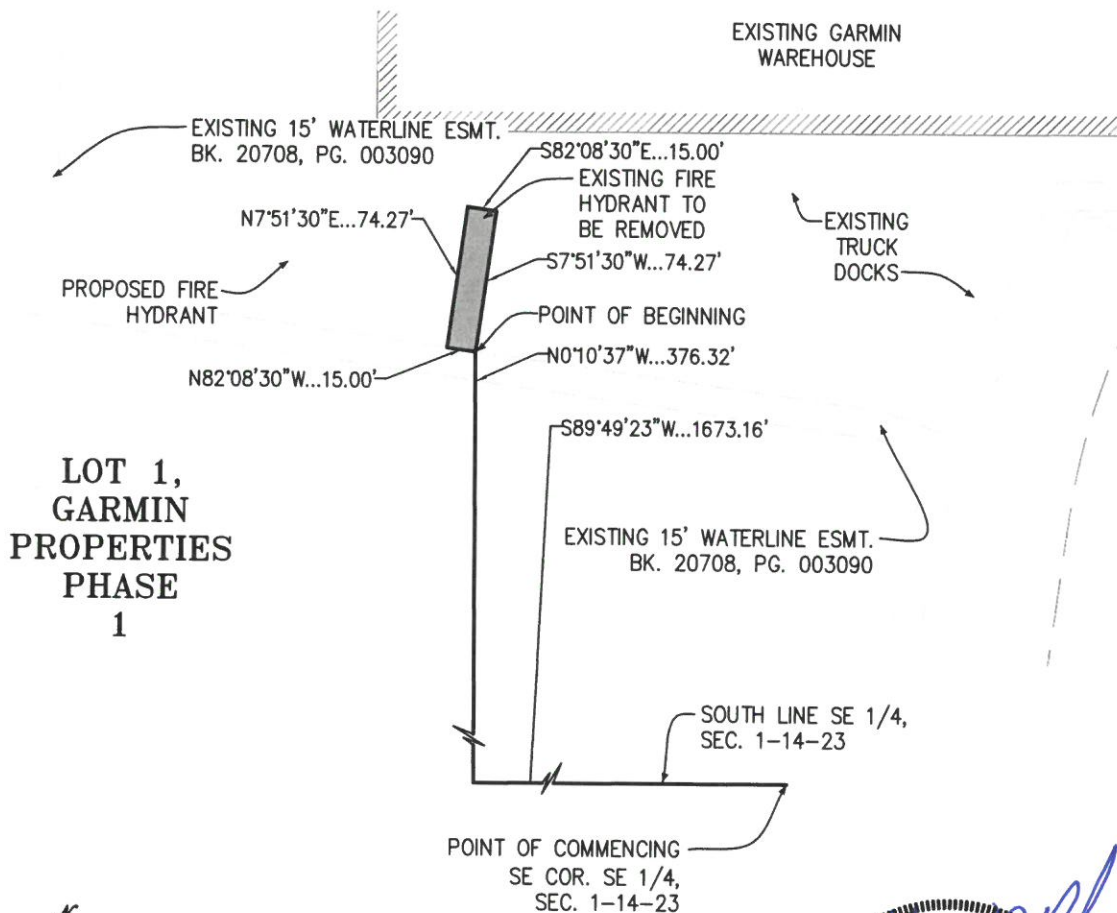
CERTIFICATE OF AUTHORIZATION KANSAS LAND  
SURVEYING - LS-82  
ENGINEERING - E-391  
CERTIFICATE OF AUTHORIZATION MISSOURI  
LAND SURVEYING-2007001128  
ENGINEERING-2007005058

PROJECT NO. 170620  
DATE: 4/30/2019  
BY: DWJ

# EXHIBIT "D"

## WATERLINE EASEMENT VACATION

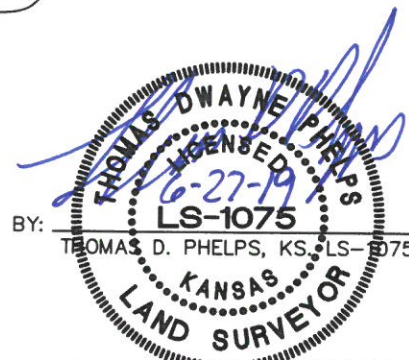
### PART OF THE S.E. 1/4 SECTION 1, T. 14 S., R. 23 E., BEING PART OF LOT 1, GARMIN PROPERTIES PHASE 1 IN THE CITY OF OLATHE, JOHNSON COUNTY, KANSAS.



SCALE: 1"=100'



I HEREBY CERTIFY THAT THIS REAL PROPERTY LEGAL DESCRIPTION HAS BEEN PREPARED BY ME OR UNDER MY DIRECT SUPERVISION.



\\PHELPS-SERVER\Projects\P\170620\Office\Easements\waterline easements note to dwj.dwg needs to be updated\waterline easements.dwg Layout: SHEET 2 OF 2 2019 - 3:36pm



PLANNING  
ENGINEERING  
IMPLEMENTATION

PHELPS ENGINEERING, INC (913) 393-1155  
1270 N. Winchester Fax (913) 393-1166  
Olathe, Kansas 66061 www.phelpsengineering.com

CERTIFICATE OF AUTHORIZATION KANSAS LAND  
SURVEYING - LS-82  
ENGINEERING - E-391  
CERTIFICATE OF AUTHORIZATION MISSOURI  
LAND SURVEYING-2007001128  
ENGINEERING-2007005058

PROJECT NO. 170620  
DATE: 4/30/2019  
BY: DWJ