



August 5, 2019

Kim Hollingsworth  
Senior Planner  
City of Olathe  
100 E Santa Fe St  
Olathe, KS 66061

Re: Summary of Neighborhood Meeting – PR19-0016: Final Development Plan for WaterOne  
Elevated Water Tank  
WaterOne PN: MP-18002  
Burns & McDonnell PN: 111858

Dear Ms. Hollingsworth:

On behalf of Water District No. 1 of Johnson County (WaterOne), Burns & McDonnell Engineering Company (Burns & McDonnell) herein provides a summary of the City of Olathe Neighborhood Meeting dated July 31, 2019 (Attachment 1).

Letters of invitation to the meeting are included in Attachment 2 and record meeting attendance is included in Attachment 3. A copy of the slides available at the meeting are included in Attachment 4.

Please let me know if you require any additional information.

Sincerely,

A handwritten signature in blue ink, appearing to read "Sarah C. Tuite".

Sarah C. Tuite, P.E.  
Project Engineer

SCT/SCT

Attachment

cc: Michelle Wirth, P.E., WaterOne  
Hanley Barker, P.E., WaterOne  
Robert Beason II, WaterOne  
Jeff Heidrick, P.E., Burns & McDonnell

## **Attachment 1**

**WATER DISTRICT NO. 1 OF JOHNSON COUNTY, KANSAS  
ELEVATED TANKS PROJECT  
MP-18002 K7/K10 2.0 MG ELEVATED TANK  
BMcD 111858**

**NEIGHBORHOOD MEETING MINUTES  
July 31, 2019 5:00 – 7:00 PM**

1. Meeting Location:

Kansas State University  
Boardroom  
22201 W Innovation Dr  
Olathe, KS 66061

2. Letters of Notification – Per the WaterOne and City of Olathe Intergovernmental Agreement dated September 3, 2013, property owners within 200 ft of the project property were invited to a neighborhood information meeting held July 31, 2019. Letters of invitation were delivered via Federal Express and are included in Attachment 2.
3. Attendance – Please see the sign in sheet included in Attachment 3 for all in attendance at the neighborhood meeting.
4. Agenda – Representatives from WaterOne and Burns & McDonnell knowledgeable about the project were available the duration of the neighborhood meeting to discuss the project and answer any questions. Presentation materials including architectural renderings, project schedule, and contact information were available at the meeting. A copy of the slides are included in Attachment 4.
5. Questions and Answers – None.

## **Attachment 2**





*Setting the Standard for  
Utility Excellence*

Water District No. 1 of Johnson County

July 16, 2019

FEDERAL EXPRESS

Chris Herrick, Director of Planning & Development  
Kansas Dept. of Transportation  
700 SW Harrison, 2<sup>nd</sup> Floor West  
Topeka, KS 66603-3745

Dear Property Owner:

As a property owner in close proximity to a new WaterOne construction project, I would like to invite you to an informal informational meeting on Wednesday, July 31, 2019 between 5:00 and 7:00 p.m. at the following address:

Kansas State University  
Boardroom  
22201 W Innovation Dr.  
Olathe, KS 66061

The purpose of the meeting is to provide you an opportunity to learn about a WaterOne project in the neighborhood's vicinity and discuss any questions that you may have.

The WaterOne project includes construction of a 2 million-gallon elevated water storage tank on property located in the southeast quadrant of the Highway K-7 and Highway K-10 interchange.

WaterOne staff will be available, as well as representatives from WaterOne's consulting engineers, Burns & McDonnell, to show you project illustrations and additional information. Refreshments will be provided. This is a "come as you are" come-and-go event. We hope to see you there, if you are interested in the project.

If you cannot attend the meeting, we will have project information on our website at [www.WaterOne.org/K7Tank](http://www.WaterOne.org/K7Tank) starting August 1, 2019 with project contacts listed for future questions.

Sincerely,

A handwritten signature in blue ink, appearing to read "Hanley Barker".

Hanley Barker  
Manager-Facilities Engineering



*Setting the Standard for  
Utility Excellence*

Water District No. 1 of Johnson County

July 16, 2019

FEDERAL EXPRESS

Bobby Kosmala, Deputy Director  
Department of Administration, Leasing & Real Estate  
700 SW Harrison, Suite 1200  
Topeka, KS 66603

Dear Property Owner:

As a property owner in close proximity to a new WaterOne construction project, I would like to invite you to an informal informational meeting on Wednesday, July 31, 2019 between 5:00 and 7:00 p.m. at the following address:

Kansas State University  
Boardroom  
22201 W Innovation Dr.  
Olathe, KS 66061

The purpose of the meeting is to provide you an opportunity to learn about a WaterOne project in the neighborhood's vicinity and discuss any questions that you may have.

The WaterOne project includes construction of a 2 million-gallon elevated water storage tank on property located in the southeast quadrant of the Highway K-7 and Highway K-10 interchange.

WaterOne staff will be available, as well as representatives from WaterOne's consulting engineers, Burns & McDonnell, to show you project illustrations and additional information. Refreshments will be provided. This is a "come as you are" come-and-go event. We hope to see you there, if you are interested in the project.

If you cannot attend the meeting, we will have project information on our website at [www.WaterOne.org/K7Tank](http://www.WaterOne.org/K7Tank) starting August 1, 2019 with project contacts listed for future questions.

Sincerely,

A handwritten signature in blue ink, appearing to read "Hanley Barker".

Hanley Barker  
Manager-Facilities Engineering



*Setting the Standard for  
Utility Excellence*

Water District No. 1 of Johnson County

July 16, 2019

FEDERAL EXPRESS

Aldi Inc., Ryan Tax Compliance Services, LLC  
PO Box 460049, Dept. 501  
Houston, TX 77056

Dear Property Owner:

As a property owner in close proximity to a new WaterOne construction project, I would like to invite you to an informal informational meeting on Wednesday, July 31, 2019 between 5:00 and 7:00 p.m. at the following address:

Kansas State University  
Boardroom  
22201 W Innovation Dr.  
Olathe, KS 66061

The purpose of the meeting is to provide you an opportunity to learn about a WaterOne project in the neighborhood's vicinity and discuss any questions that you may have.

The WaterOne project includes construction of a 2 million-gallon elevated water storage tank on property located in the southeast quadrant of the Highway K-7 and Highway K-10 interchange.

WaterOne staff will be available, as well as representatives from WaterOne's consulting engineers, Burns & McDonnell, to show you project illustrations and additional information. Refreshments will be provided. This is a "come as you are" come-and-go event. We hope to see you there, if you are interested in the project.

If you cannot attend the meeting, we will have project information on our website at [www.WaterOne.org/K7Tank](http://www.WaterOne.org/K7Tank) starting August 1, 2019 with project contacts listed for future questions.

Sincerely,

A handwritten signature in blue ink, appearing to read "Hanley Barker".

Hanley Barker  
Manager-Facilities Engineering

### **Attachment 3**

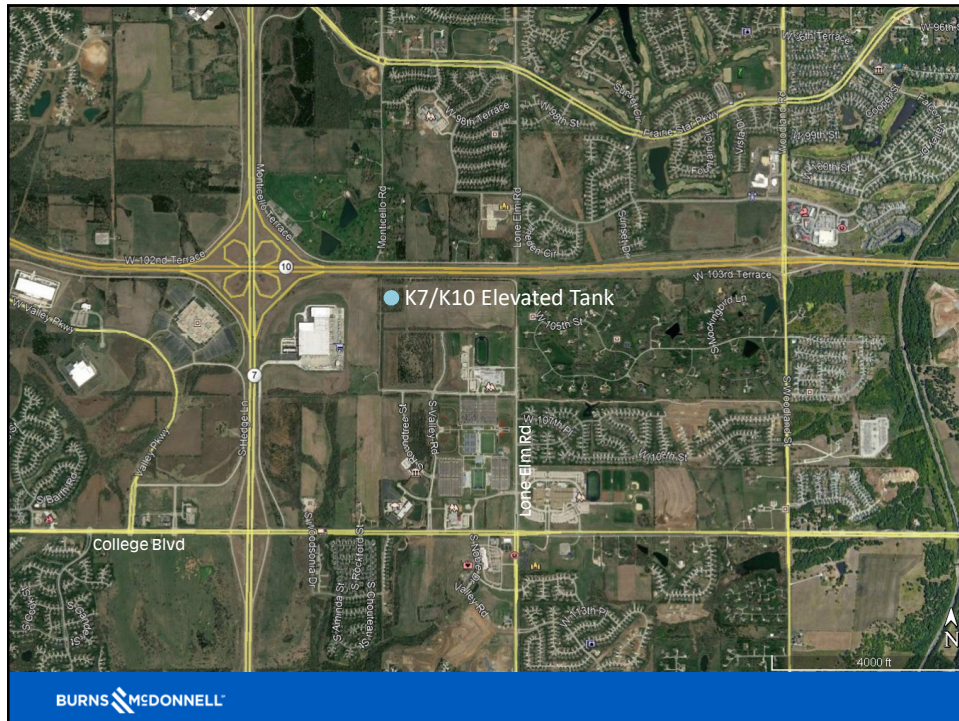
## Meeting Sign in

Meeting Subject: Neighborhood Meeting - Elevated Tanks Project – 2.0 MG Tank near K7/K10 Interchange  
 Meeting Date: July 31, 2019  
 Start Time: 5:00 PM  
 End Time: 7:00 PM  
 Location: Kansas State University Olathe  
 Project Name: Project MP-18002 K7/K10 Elevated Tank  
 Project No.: 111858

Name	Phone	Email Address
MIKE ARMSTRONG	913 579 5204	
Sarah Tuite	5053855743	stuite@burnsmcd.com
Mike O'Connell	816 822 3218	moconnell@burnsmcd.com
HANLEY BARKER	913 895 5826	hbarker@waterone.org
Michelle A. Wirth	913-895-5821	mwirth@waterone.org
Jeff Heidrick	816-349-6769	jheidrick@burnsmcd.com

## **Attachment 4**

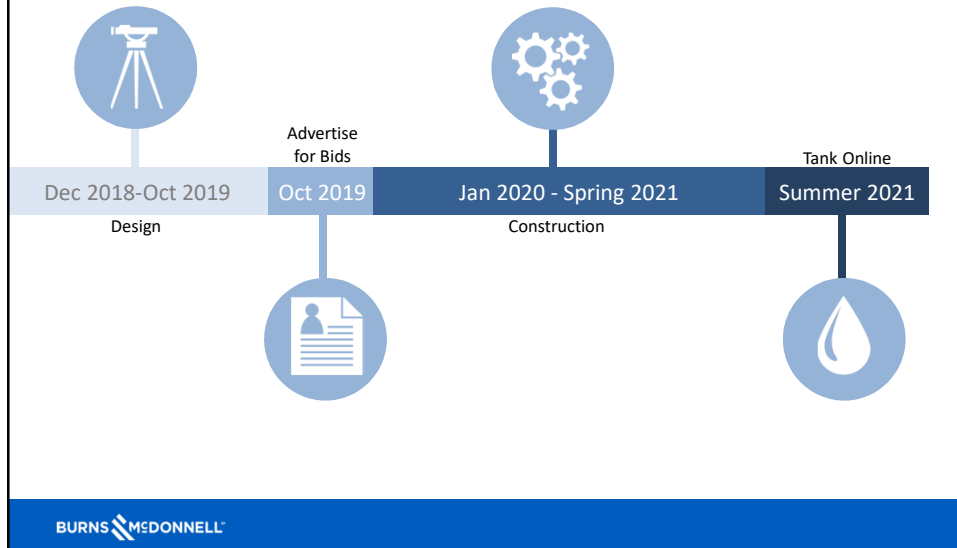








## Project Schedule



## Questions or Comments?

- ▶ Please visit [waterone.org/k10tower](http://waterone.org/k10tower) for additional information
- ▶ Please feel free to leave questions and/or comments on the available comment cards
- ▶ WaterOne Contact Information
  - Michelle Wirth, P.E., Director of Production [mwirth@waterone.org](mailto:mwirth@waterone.org)
  - Hanley Barker, P.E., Facilities Engineering Manager [hbarker@waterone.org](mailto:hbarker@waterone.org)
  - Robert Beason II, Project Manager [rbeason@waterone.org](mailto:rbeason@waterone.org)
- ▶ Burns & McDonnell Contact Information
  - Jeff Heidrick, P.E. [jheidrick@burnsmcd.com](mailto:jheidrick@burnsmcd.com)
  - Sarah Tuite, P.E. [sctuite@burnsmcd.com](mailto:sctuite@burnsmcd.com)