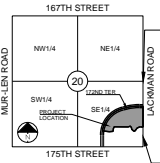


ENCLAVE OF BOULDER HILLS

PART OF THE SE 1/4 OF SEC. 30 T14N R34E
IN THE CITY OF OLATHE, JOHNSON COUNTY, KANSAS



SECTION 20-14-34

LOCATION MAP

SCALE 1" = 200'

LEGEND:

- B/B or B2B - BACK TO BACK
- BM - BENCHMARK
- BL or B.L. - BUILDING LINE
- D/E - DRAINAGE EASEMENT
- E/E - ELECTRICAL EASEMENT
- G/E - GAS LINE EASEMENT
- L/E - LANDSCAPE EASEMENT
- R/W or R.W. - RIGHT-OF-WAY
- S/E - SANITARY SEWER EASEMENT
- U/E - UTILITY EASEMENT
- W/E - WATERLINE EASEMENT
- CURB & GUTTER
- CURB & GUTTER - EXISTING
- EXISTING LOT AND R/W LINES
- EXISTING PLAT LINES
- SANITARY SEWER MAIN
- SANITARY SEWER MAIN - EXIST.
- STORM SEWER
- STORM SEWER - EXISTING
- CABLE TV - EXISTING
- FIBER OPTIC CABLE - EXISTING
- TELEPHONE LINE - EXIST.
- ELECTRIC LINE - EXISTING
- OVERHEAD POWER LINE - EXIST.
- UNDERGROUND ELECTRIC - EX.
- GAS LINE - EXISTING
- WATERLINE - EXISTING
- LIGHT - EXISTING
- EXISTING MANHOLE
- CLEANOUT
- EXISTING SANITARY MANHOLE
- PROPOSED SANITARY MANHOLE
- EXISTING AREA INLET
- EXISTING CURB INLET
- EXISTING GRATE INLET
- EXISTING JUNCTION BOX
- EXISTING STORM MANHOLE

Description:

Part of the Southeast One-Quarter of Section 20, Township 14 North, Range 24 East, in the City of Olathe, Johnson County, Kansas, being more particularly described as follows:

Commencing at the Southeast corner of said Southeast One-Quarter, thence North 02 degrees 33 minutes 10 seconds West along the East line of said Southeast One-Quarter, a distance of 798.58 feet to the Point of Beginning; thence South 87 degrees 26 minutes 50 seconds West a distance of 86.44 feet to a point of curve, thence along a curve to the left, tangent to the previous course and having a radius of 225.00 feet, a central angle of 49 degrees 33 minutes 20 seconds and an arc length of 203.25 feet; thence South 37 degrees 53 minutes 30 seconds West a distance of 113.42 feet; thence North 85 degrees 12 minutes 48 seconds West a distance of 85.10 feet; thence North 51 degrees 59 minutes 22 seconds West a distance of 110.04 feet; thence North 11 degrees 34 minutes 24 seconds West a distance of 68.69 feet; thence North 40 degrees 10 minutes 40 seconds West a distance of 72.44 feet; thence South 67 degrees 19 minutes 12 seconds West a distance of 94.92 feet; thence South 87 degrees 59 minutes 12 seconds West a distance of 554.52 feet; thence South 21 degrees 48 minutes 44 seconds West a distance of 72.39 feet; thence South 67 degrees 34 minutes 57 seconds West a distance of 93.92 feet; thence South 35 degrees 07 minutes 38 seconds West a distance of 27.52 feet; thence South 62 degrees 23 minutes 18 seconds West a distance of 142.04 feet; thence North 68 degrees 07 minutes 44 seconds East, a distance of 91.67 feet; thence North 84 degrees 31 minutes 19 seconds West a distance of 187.27 feet to a point of curvature; thence Northeast along a curve to the right having an initial tangent bearing of North 68 degrees 07 minutes 44 seconds East, a radius of 1100.00 feet, a central angle of 68 degrees 16 minutes 27 seconds and an arc length of 1310.77 feet; thence North 74 degrees 24 minutes 11 seconds East a distance of 156.04 feet to a point of curvature; thence East along a curve to the right tangent to the previous course, having a radius of 2300.00 feet, a central angle of 13 degrees 02 minutes 38 seconds and an arc length of 823.82 feet; thence North 87 degrees 26 minutes 50 seconds East a distance of 152.43 feet to a point on the East line of said Southeast One-Quarter, thence South 02 degrees 33 minutes 10 seconds East, along the East line of said Southeast One-Quarter a distance of 844.90 feet to the Point of Beginning, and containing 26.9004 acres, more or less.

LOT #	AREA (SF)
1	6,892.31
2	6,930.01
3	8,900.07
4	6,930.07
5	6,930.07
6	6,906.74
7	7,291.98
8	7,298.34
9	7,791.95
10	7,817.93
11	7,372.85
12	6,947.53
13	7,860.12
14	6,942.28
15	6,934.32
16	10,028.53
17	7,128.93
18	8,551.58
19	12,237.43
20	11,088.16
21	6,000.00
22	6,000.00
23	6,225.10
24	6,445.31
25	6,560.38
26	6,573.22
27	6,791.51
28	6,500.00
29	6,500.00
30	7,785.46
31	6,127.52
32	7,488.68
33	8,224.26
34	7,260.19
35	6,436.44
36	7,186.29
37	6,151.01
38	7,339.55
39	6,601.58
40	6,624.05

LOT #	AREA (SF)
41	7,707.42
42	11,731.06
43	7,983.07
44	7,221.28
45	6,146.36
46	7,625.24
47	6,838.73
48	6,838.73
49	6,823.86
50	13,953.87
51	7,808.58
52	7,372.57
53	6,478.13
54	6,000.00
55	6,000.00
56	6,000.00
57	6,000.00
58	6,000.00
59	6,000.00
60	6,437.71

LOT #	AREA (SF)
61	7,254.16
62	9,314.08
63	6,892.67
64	6,435.40
65	6,288.37
66	6,982.89
67	6,868.53
68	6,249.97
69	6,219.97
70	6,583.42
71	7,366.50
72	7,786.05
73	6,313.05
74	6,641.41
75	6,703.50
76	6,703.50
77	6,703.50
78	6,868.53
79	6,279.00
80	9,202.38
81	7,808.58
82	6,905.76
83	6,774.32
84	7,788.02
85	6,911.63
86	7,244.00
87	6,591.01
88	6,249.97
89	6,703.46
90	6,780.14
91	6,747.81
TRACT A	6,641.75
TRACT C	27,601.38
TRACT D	6,887.27
TRACT E	18,449.38
TRACT F	15,390.08

LOT #	AREA (SF)
81	7,808.58
82	6,905.76
83	6,774.32
84	7,788.02
85	6,911.63
86	7,244.00
87	6,591.01
88	6,249.97
89	6,703.46
90	6,780.14
91	6,747.81
TRACT A	6,641.75
TRACT C	27,601.38
TRACT D	6,887.27
TRACT E	18,449.38
TRACT F	15,390.08

OWNER/DEVELOPER:

KOLLIC
TRAVIS SCHRAM
4300 W 1400 STREET, SUITE 200
OVERLAND PARK, KS 66223
P 913-724-8778
F 913-724-8778

VILLA PRELIMINARY PLAT

SHEET

PP1.0

OF

SCHLAGEL & ASSOCIATES, P.A.
Engineers, Planners, Surveyors, Landscape Architects
1400 West 107th Street, Suite 200
Overland Park, Kansas 66213
WWW.SCHLAGELANDASSOCIATES.COM

172ND TERRACE AND LACKMAN ROAD

OLATHE, KANSAS

ENCLAVE OF BOULDER HILLS

PRELIMINARY PLAT

172ND TERRACE AND LACKMAN ROAD

OLATHE, KANSAS

ENCLAVE OF BOULDER HILLS

PRELIMINARY PLAT

172ND TERRACE AND LACKMAN ROAD

OLATHE, KANSAS

ENCLAVE OF BOULDER HILLS

PRELIMINARY PLAT

172ND TERRACE AND LACKMAN ROAD

OLATHE, KANSAS

ENCLAVE OF BOULDER HILLS

PRELIMINARY PLAT

172ND TERRACE AND LACKMAN ROAD

OLATHE, KANSAS

ENCLAVE OF BOULDER HILLS

PRELIMINARY PLAT

172ND TERRACE AND LACKMAN ROAD

OLATHE, KANSAS

ENCLAVE OF BOULDER HILLS

PRELIMINARY PLAT

172ND TERRACE AND LACKMAN ROAD

OLATHE, KANSAS

ENCLAVE OF BOULDER HILLS

PRELIMINARY PLAT

172ND TERRACE AND LACKMAN ROAD

OLATHE, KANSAS

ENCLAVE OF BOULDER HILLS

PRELIMINARY PLAT

172ND TERRACE AND LACKMAN ROAD

OLATHE, KANSAS

ENCLAVE OF BOULDER HILLS

PRELIMINARY PLAT

172ND TERRACE AND LACKMAN ROAD

OLATHE, KANSAS

ENCLAVE OF BOULDER HILLS

PRELIMINARY PLAT

172ND TERRACE AND LACKMAN ROAD

OLATHE, KANSAS

ENCLAVE OF BOULDER HILLS

PRELIMINARY PLAT

172ND TERRACE AND LACKMAN ROAD

OLATHE, KANSAS

ENCLAVE OF BOULDER HILLS

PRELIMINARY PLAT

172ND TERRACE AND LACKMAN ROAD

OLATHE, KANSAS

ENCLAVE OF BOULDER HILLS

PRELIMINARY PLAT

172ND TERRACE AND LACKMAN ROAD

OLATHE, KANSAS

ENCLAVE OF BOULDER HILLS

PRELIMINARY PLAT

172ND TERRACE AND LACKMAN ROAD

OLATHE, KANSAS

ENCLAVE OF BOULDER HILLS

PRELIMINARY PLAT

172ND TERRACE AND LACKMAN ROAD

OLATHE, KANSAS

ENCLAVE OF BOULDER HILLS

PRELIMINARY PLAT

172ND TERRACE AND LACKMAN ROAD

OLATHE, KANSAS

ENCLAVE OF BOULDER HILLS

PRELIMINARY PLAT

172ND TERRACE AND LACKMAN ROAD

OLATHE, KANSAS

ENCLAVE OF BOULDER HILLS

PRELIMINARY PLAT

172ND TERRACE AND LACKMAN ROAD

OLATHE, KANSAS

ENCLAVE OF BOULDER HILLS

PRELIMINARY PLAT

172ND TERRACE AND LACKMAN ROAD

OLATHE, KANSAS

ENCLAVE OF BOULDER HILLS

PRELIMINARY PLAT

172ND TERRACE AND LACKMAN ROAD

OLATHE, KANSAS

ENCLAVE OF BOULDER HILLS

PRELIMINARY PLAT

172ND TERRACE AND LACKMAN ROAD

OLATHE, KANSAS

ENCLAVE OF BOULDER HILLS

PRELIMINARY PLAT

172ND TERRACE AND LACKMAN ROAD

OLATHE, KANSAS

ENCLAVE OF BOULDER HILLS

PRELIMINARY PLAT

172ND TERRACE AND LACKMAN ROAD

OLATHE, KANSAS

ENCLAVE OF BOULDER HILLS

PRELIMINARY PLAT

172ND TERRACE AND LACKMAN ROAD

OLATHE, KANSAS

ENCLAVE OF BOULDER HILLS

PRELIMINARY PLAT

172ND TERRACE AND LACKMAN ROAD

OLATHE, KANSAS

ENCLAVE OF BOULDER HILLS

PRELIMINARY PLAT

172ND TERRACE AND LACKMAN ROAD

OLATHE, KANSAS

ENCLAVE OF BOULDER HILLS

PRELIMINARY PLAT

172ND TERRACE AND LACKMAN ROAD

OLATHE, KANSAS

ENCLAVE OF BOULDER HILLS

PRELIMINARY PLAT

172ND TERRACE AND LACKMAN ROAD

OLATHE, KANSAS

ENCLAVE OF BOULDER HILLS

PRELIMINARY PLAT

172ND TERRACE AND LACKMAN ROAD

OLATHE, KANSAS

ENCLAVE OF BOULDER HILLS

PRELIMINARY PLAT

172ND TERRACE AND LACKMAN ROAD

OLATHE, KANSAS

ENCLAVE OF BOULDER HILLS

PRELIMINARY PLAT

172ND TERRACE AND LACKMAN ROAD

OLATHE, KANSAS

ENCLAVE OF BOULDER HILLS

PRELIMINARY PLAT

172ND TERRACE AND LACKMAN ROAD

OLATHE, KANSAS

ENCLAVE OF BOULDER HILLS

PRELIMINARY PLAT

172ND TERRACE AND LACKMAN ROAD

OLATHE, KANSAS

ENCLAVE OF BOULDER HILLS

PRELIMINARY PLAT

172ND TERRACE AND LACKMAN ROAD

OLATHE, KANSAS

ENCLAVE OF BOULDER HILLS

PRELIMINARY PLAT

172ND TERRACE AND LACKMAN ROAD

OLATHE, KANSAS

ENCLAVE OF BOULDER HILLS

PRELIMINARY PLAT

172ND TERRACE AND LACKMAN ROAD

OLATHE, KANSAS

ENCLAVE OF BOULDER HILLS

PRELIMINARY PLAT

172ND TERRACE AND LACKMAN ROAD