

Mahaffie Circle Improvement Projects

Beth Wright, P.E.
Deputy Director of Public Works
September 17, 2019

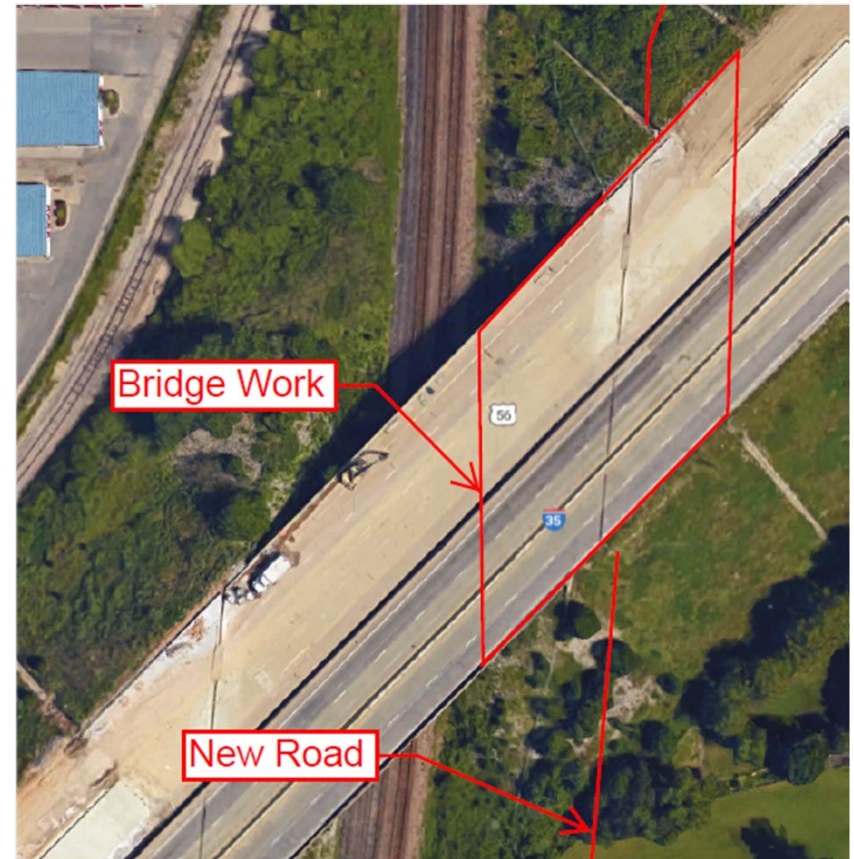


Background



- Project authorized on November 21, 2017
- Extends Mahaffie Circle from north terminus to Old 56 Hwy
- Public/Private Partnership
 - Olathe - \$6,000,000
 - KDOT - \$7,000,000
 - Garmin - \$1,800,000

I-35 Bridge Work



Mahaffie Extension – South Half



Mahaffie Extension – North Half



Potential Contact with Pyramid



- Estimated completion date of August 31, 2020 – 4 months ahead of schedule
- Estimated cost savings of \$165,000 (3%) from Engineer's Estimate
- Potential contract for Council consideration on October 1st