

DESCRIPTION:

A 12 FOOT WIDE UTILITY EASEMENT BEING VACATED AND LOCATED ACROSS A PORTION OF LOT 1 AND LOT 3, MILLBROOKE, A SUBDIVISION IN THE CITY OF OLATHE, AS FILED IN BOOK 21 AT PAGE 61 RECORDED IN THE REGISTER OF DEEDS OFFICE, ALL IN JOHNSON COUNTY, KANSAS, MORE PARTICULARLY DESCRIBED BY KENNETH J. DEDRICK, PS-1067 ON THIS 9TH DAY OF JULY, 2019 AS FOLLOWS:

ALL THAT PART OF A PLATTED 12 FOOT WIDE UTILITY EASEMENT AS BEING LOCATED IN SAID LOT 1 AND SAID LOT 3 OF MILLBROOKE.

THE DATA USED TO CREATE THIS DESCRIPTION WAS GATHERED BY FIELD SURVEY ON MAY 23, 2019.

CONTAINS 2,395 SQUARE FEET OR 0.055 ACRES MORE OR LESS.

SURVEYOR'S CERTIFICATION:

I, KENNETH J. DEDRICK, BEING A DULY REGISTERED AND LICENSED LAND SURVEYOR IN THE STATE OF KANSAS, HEREBY CERTIFY THAT THIS REAL PROPERTY DESCRIPTION WAS PREPARED BY ME OR UNDER MY DIRECT SUPERVISION AND IS CORRECT TO THE BEST OF MY BELIEF AND KNOWLEDGE.



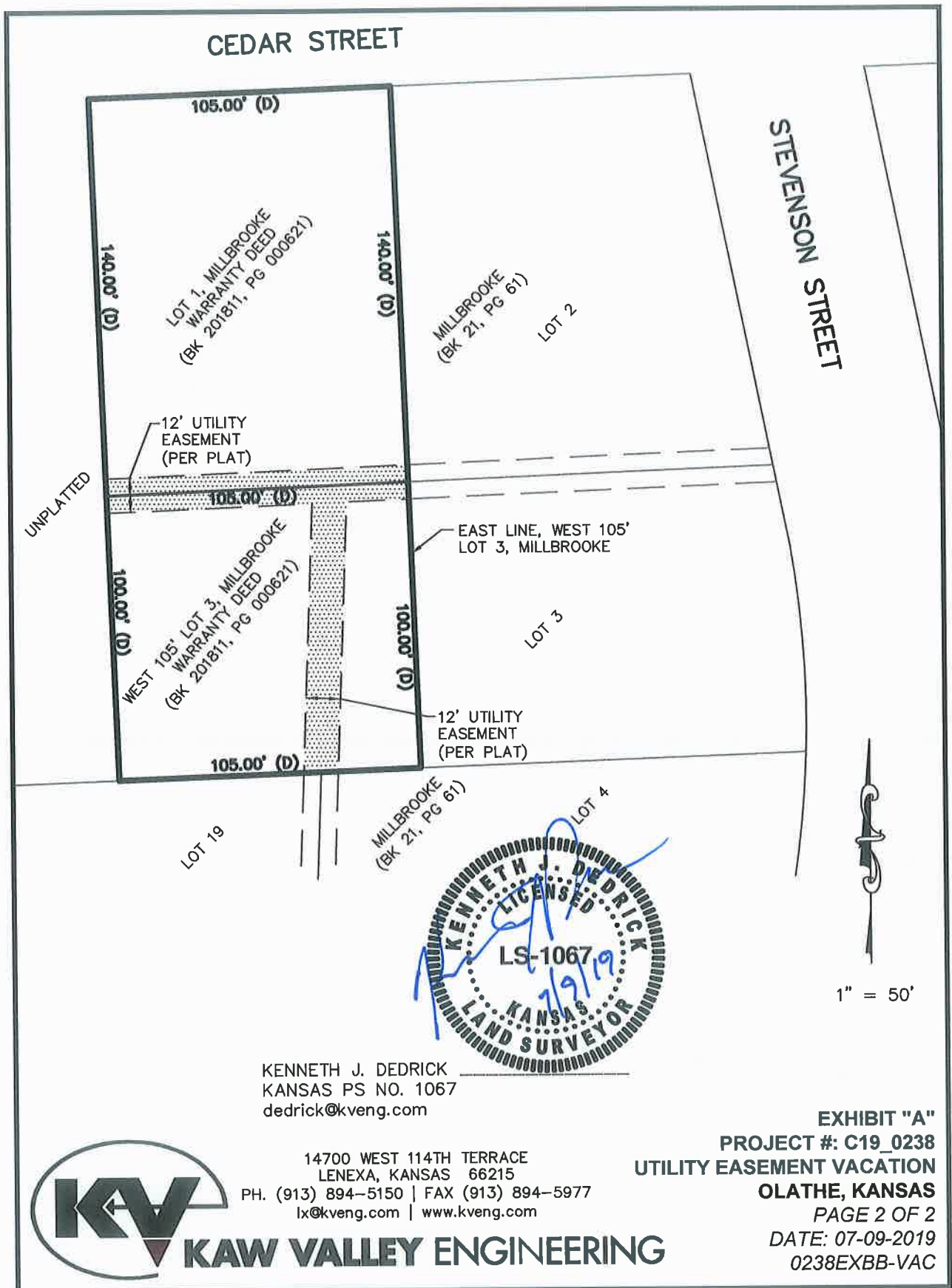
KENNETH J. DEDRICK
KANSAS PS NO. 1067
dedrick@kveng.com



14700 WEST 114TH TERRACE
LENEXA, KANSAS 66215
PH. (913) 894-5150 | FAX (913) 894-5977
lx@kveng.com | www.kveng.com

KAW VALLEY ENGINEERING

EXHIBIT "A"
PROJECT #: C19_0238
UTILITY EASEMENT VACATION
OLATHE, KANSAS
PAGE 1 OF 2
DATE: 07-09-2019
0238EXBB-VAC



KENNETH J. DEDRICK
KANSAS PS NO. 1067
dedrick@kveng.com



KAW VALLEY ENGINEERING

14700 WEST 114TH TERRACE
LENEXA, KANSAS 66215
PH. (913) 894-5150 | FAX (913) 894-5977
lx@kveng.com | www.kveng.com

EXHIBIT "A"
PROJECT #: C19_0238
UTILITY EASEMENT VACATION
OLATHE, KANSAS
PAGE 2 OF 2
DATE: 07-09-2019
0238EXBB-VAC