

# GARMIN OLATHE SOCCER COMPLEX

sponsorship branding

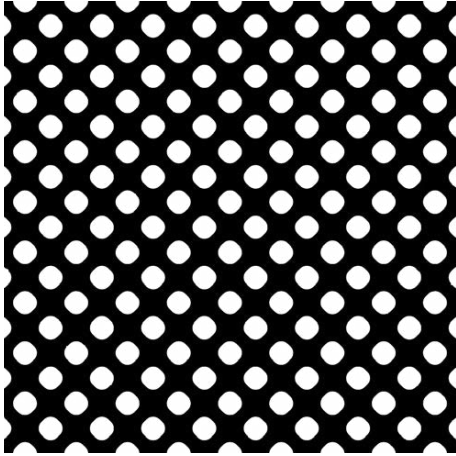
# PROPOSED SIGNAGE LOCATIONS



West 106th Street

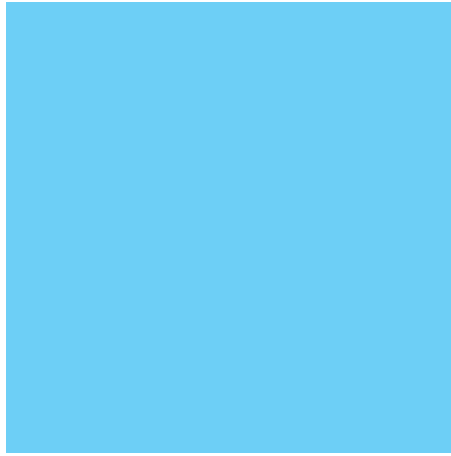
South Ridgeview Road

# MATERIAL PALETTE



METAL MESH

match existing



CANDY BLUE



WHITE PLEX

## SIGNAGE SQUARE FOOTAGE

- The applicant will continue to work with staff on ensuring light pollution, light spillage, and glare does not occur with the internal illumination of signs included within this package.
- The type of illumination of the signs may be subject to change.

### GATEWAY SIGN



53 sq. ft.  
each face

### RIDGEVIEW SIGN



28.9 sq. ft.  
each face

### V SHAPED SIGN



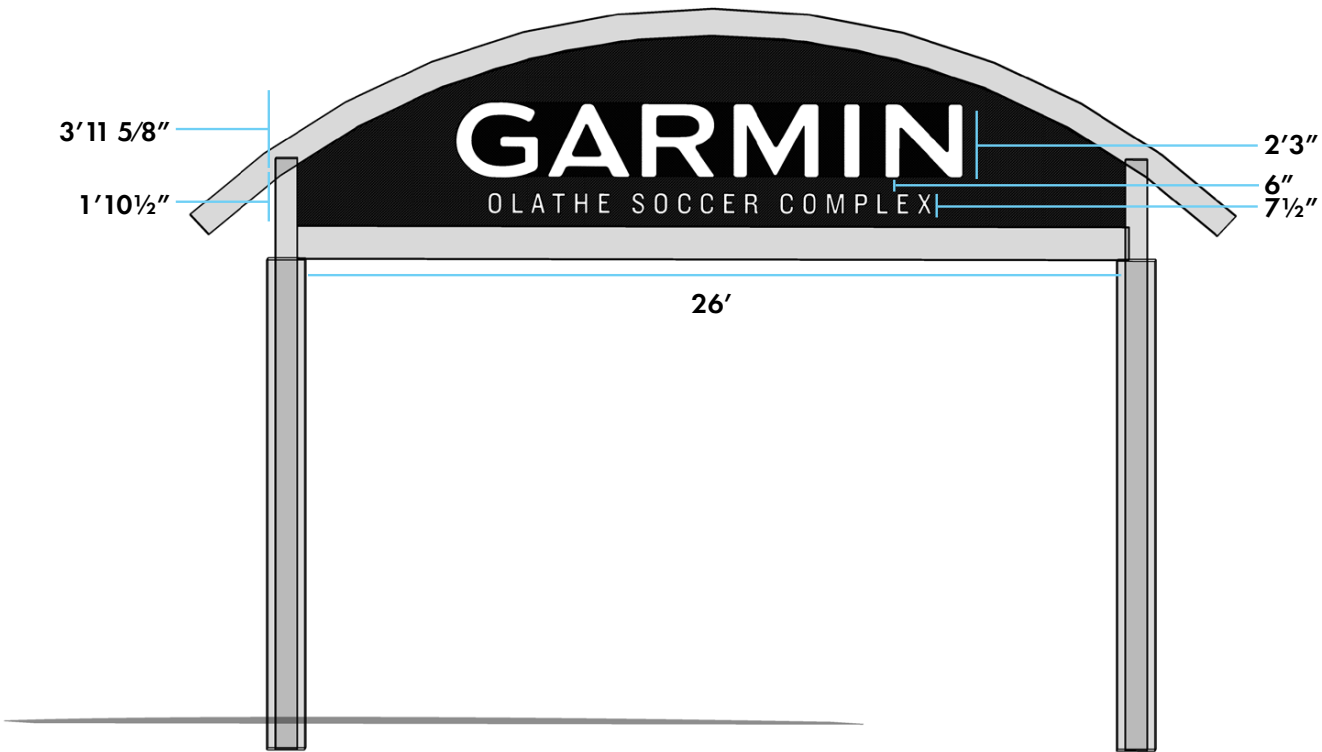
64.5 sq. ft.  
each face

### WALL SIGN



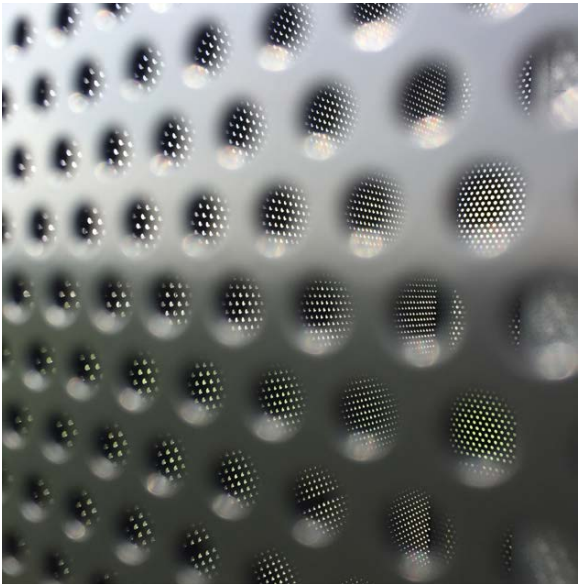
497 sq. ft.  
each face

# FIELD ENTRIES





metal perforation details



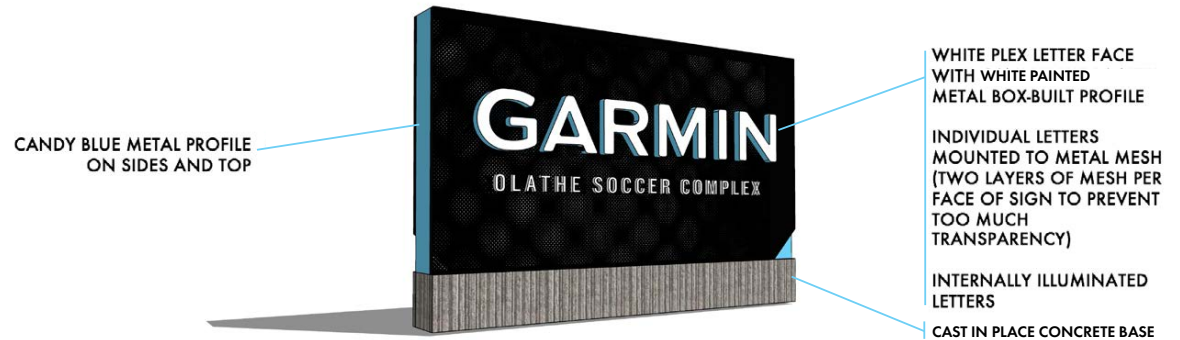
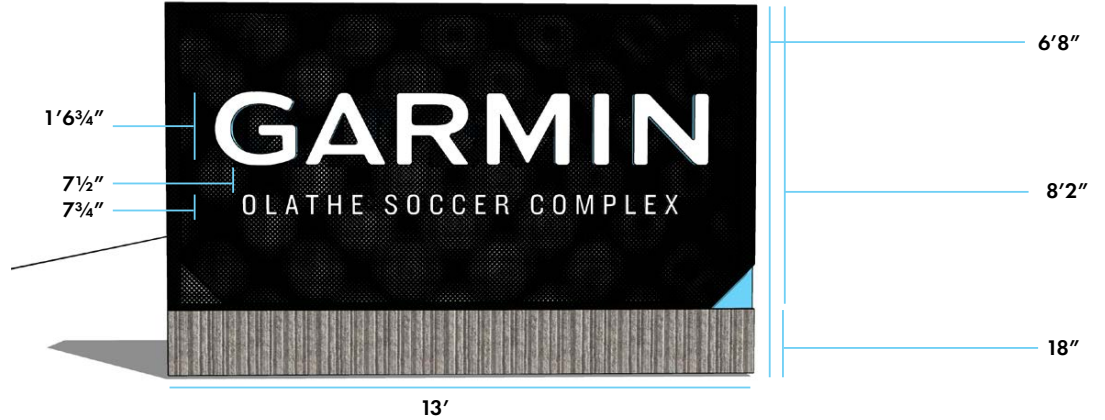
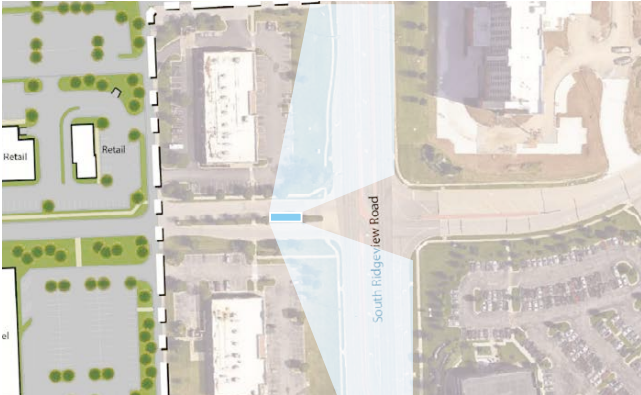
# GARMIN

OLATHE SOCCER COMPLEX



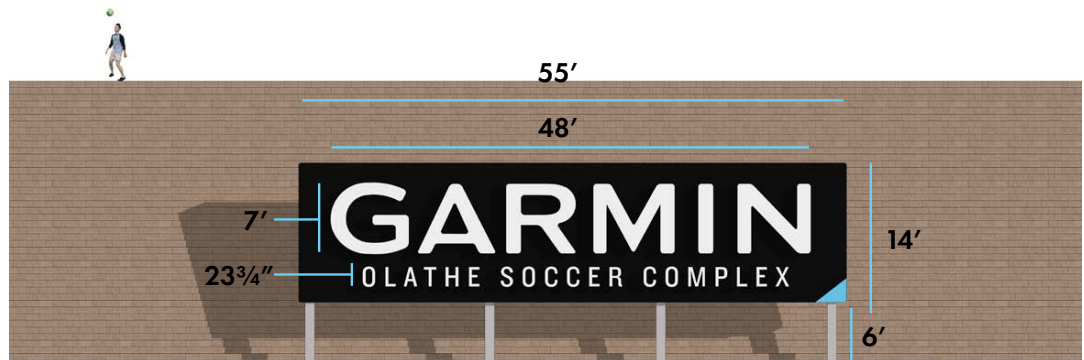


## COMPLEX ENTRY SIGN: RIDGEVIEW





# RETAINING WALL



## PLAZA: V SHAPE SIGN

GARMIN letters  
2'4" tall  
bottom of letters  
5' above plaza

OSC letters  
8" tall  
bottom of letters  
3'6" above plaza

plaza surface



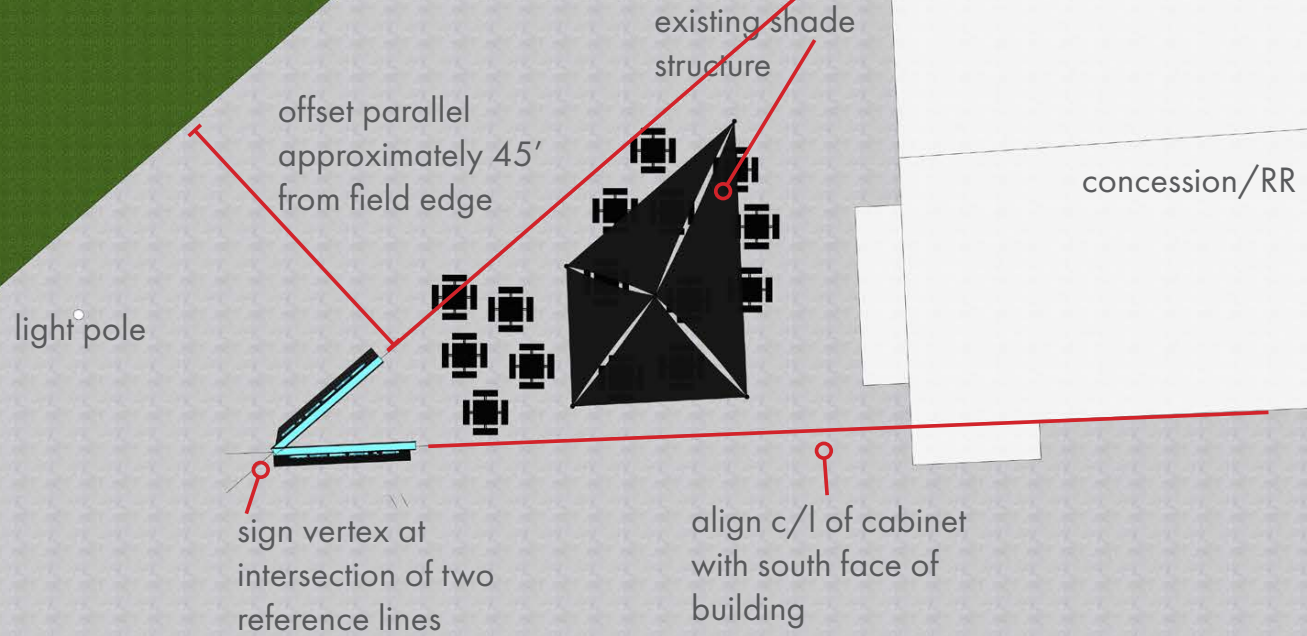
6'5"

8'10"

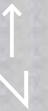
1' candy blue reveal

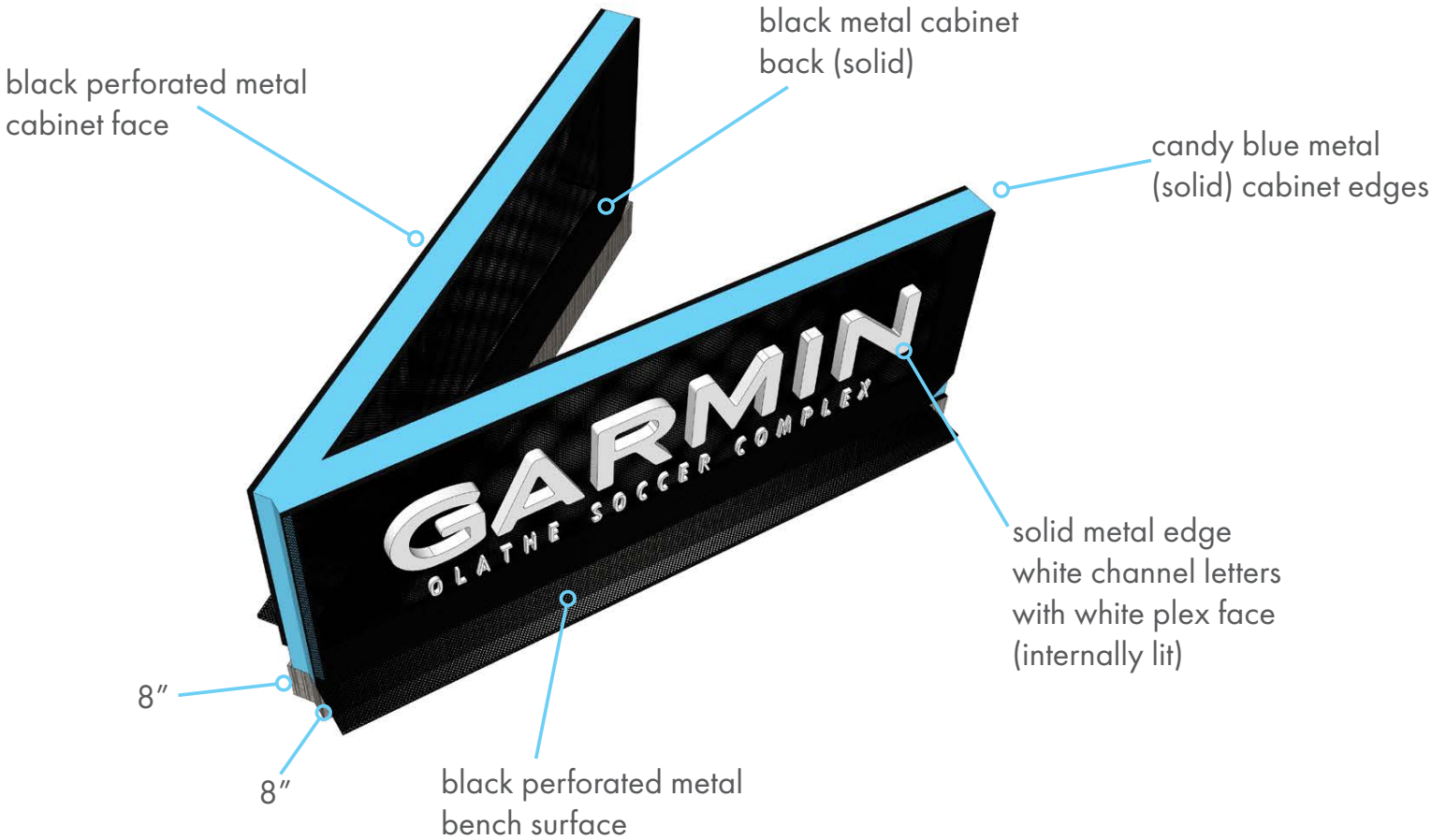
16"

FOR INTENT ONLY  
PLEASE FIELD VERIFY FOR  
BEST LOCATION

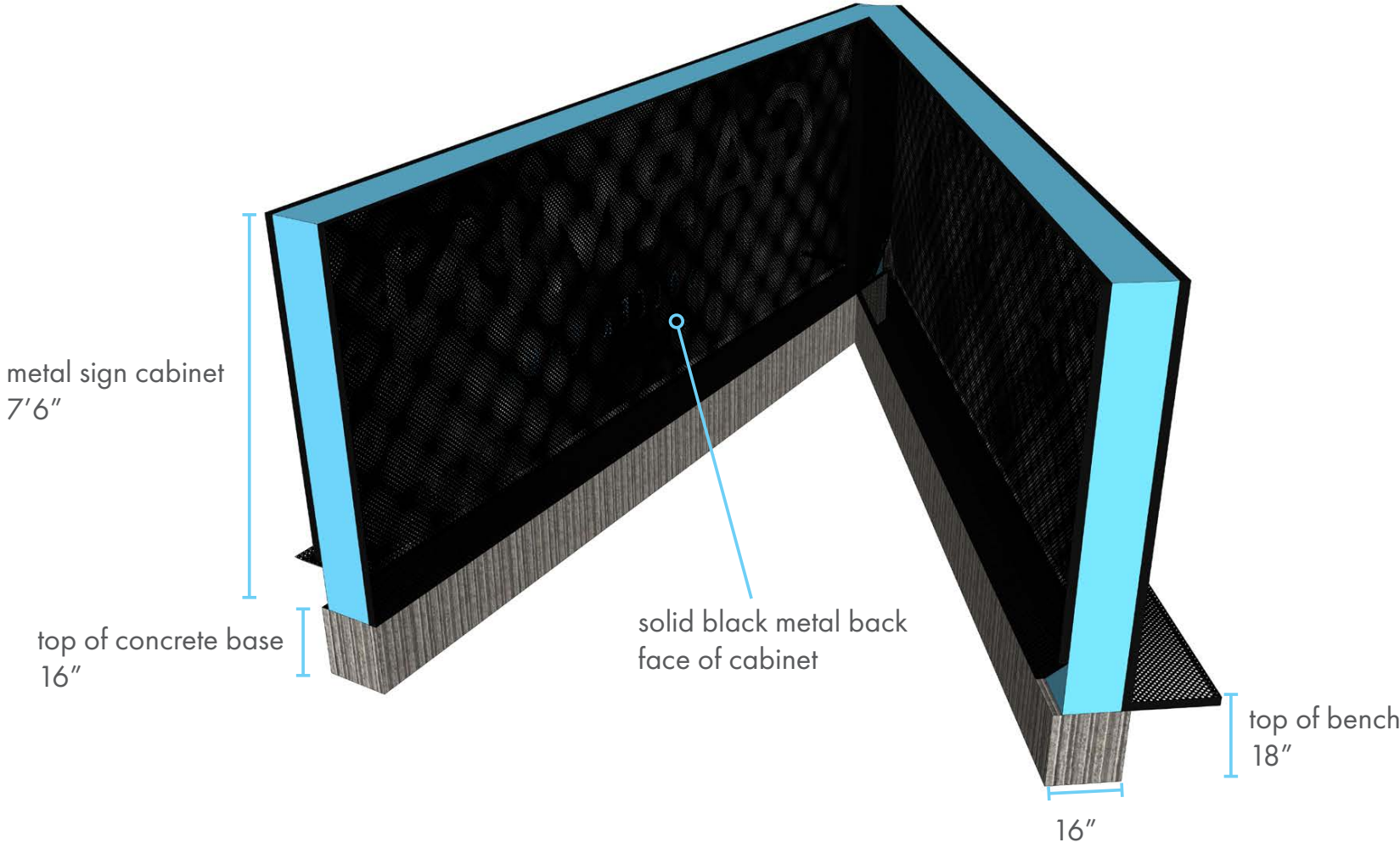


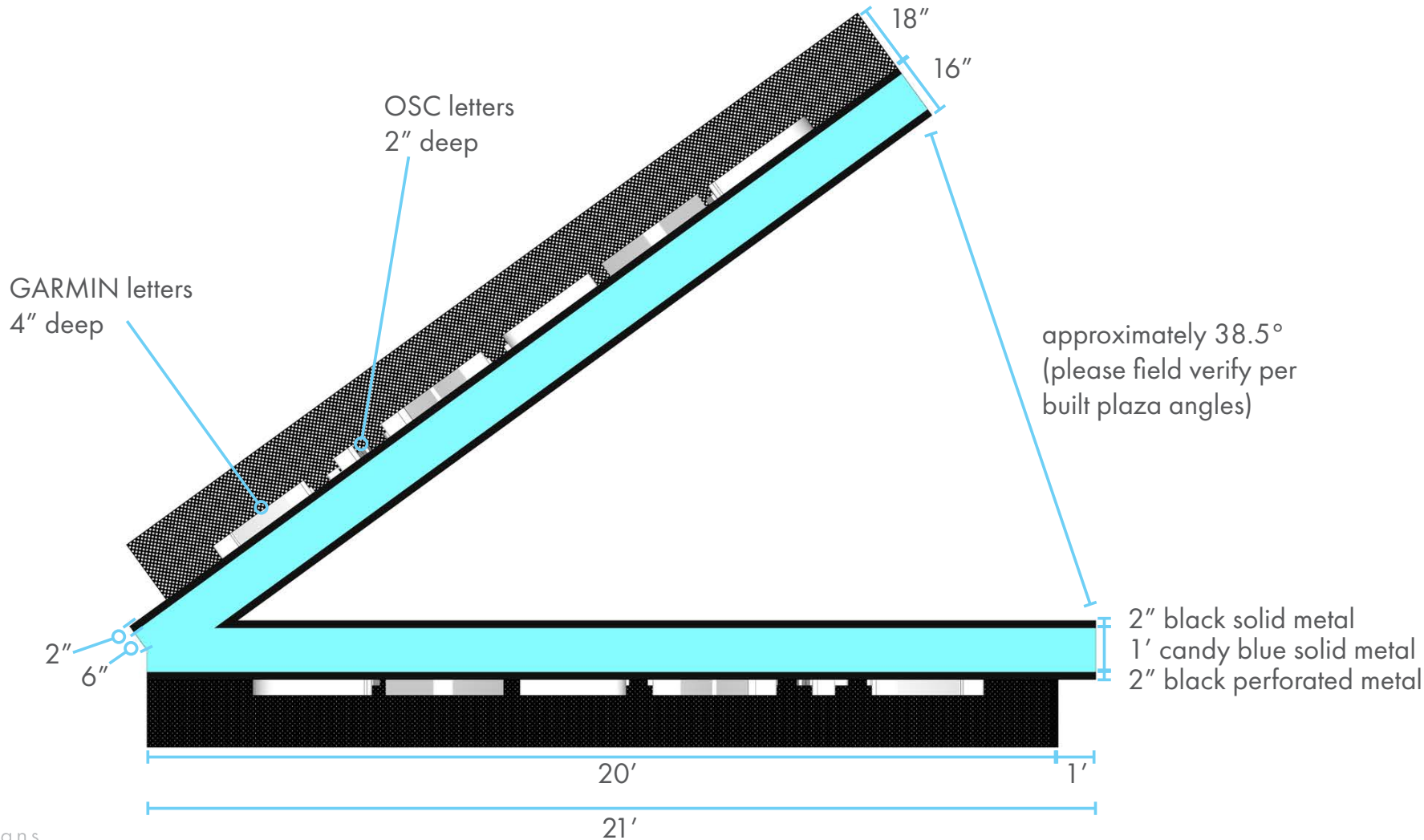
west entry  
canopy











THANK YOU