

WEST ELEVATION
1/8" = 1'-0"



NORTH ELEVATION
1/8" = 1'-0"



EAST ELEVATION
1/8" = 1'-0"



SOUTH ELEVATION (PRIMARY)
1/8" = 1'-0"



FACE BRICK - ADOBE SANDS, ANTIQUE
(TO COORDINATE WITH BRICK ON TOWER)



FIBER CEMENT LAP SIDING (BEIGE)



GROUND-FACE CMU (ASH CHARCOAL)

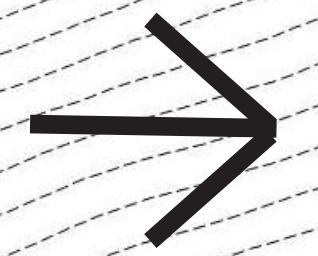
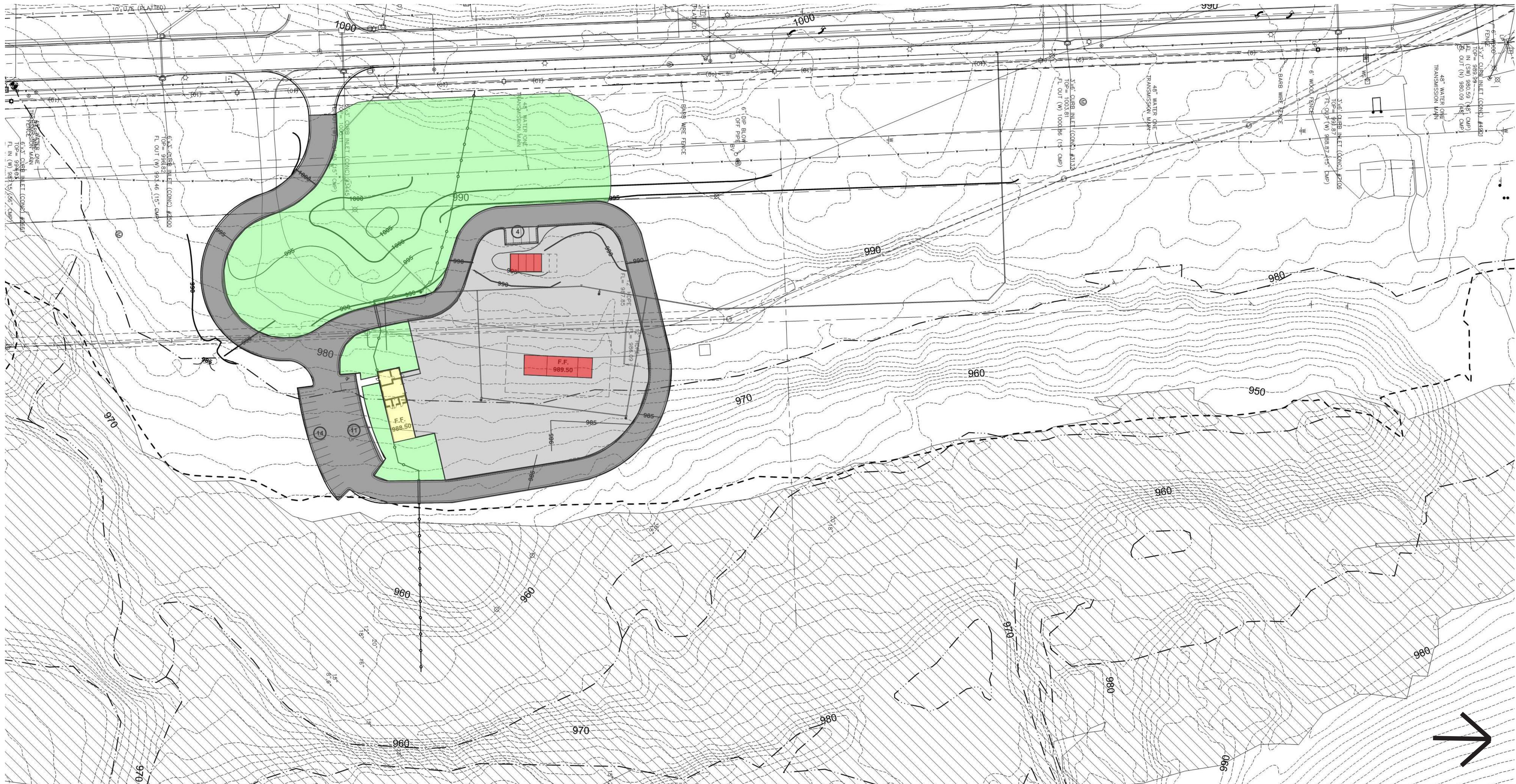


STANDING SEAM METAL ROOF (DARK BRONZE)

SOUTH FAÇADE		
BRICK (CLASS 1)	245 SF	36%
CLEAR GLASS (CLASS 1)	125 SF	19%
GROUND FACE BLOCK (CLASS 2)	95 SF	14%
FIBER CEMENT SIDING (CLASS 3)	209 SF	31%
	674 SF	
EAST FAÇADE		
BRICK (CLASS 1)	217 SF	60%
GROUND FACE BLOCK (CLASS 2)	67 SF	19%
FIBER CEMENT SIDING (CLASS 3)	77 SF	21%
	361 SF	

FACADE MATERIAL CALCULATIONS

NORTH FAÇADE		
BRICK (CLASS 1)	219 SF	57%
CLEAR GLASS (CLASS 1)	68 SF	18%
GROUND FACE BLOCK (CLASS 2)	73 SF	19%
FIBER CEMENT SIDING (CLASS 3)	25 SF	6%
	385 SF	
WEST FAÇADE		
BRICK (CLASS 1)	143 SF	40%
CLEAR GLASS (CLASS 1)	74 SF	20%
GROUND FACE BLOCK (CLASS 2)	67 SF	19%
FIBER CEMENT SIDING (CLASS 3)	77 SF	21%
	361 SF	



SITE PLAN
1:50 SCALE



1. VIEW FROM SOUTH SITE ENTRANCE (LAYTON DRIVE)



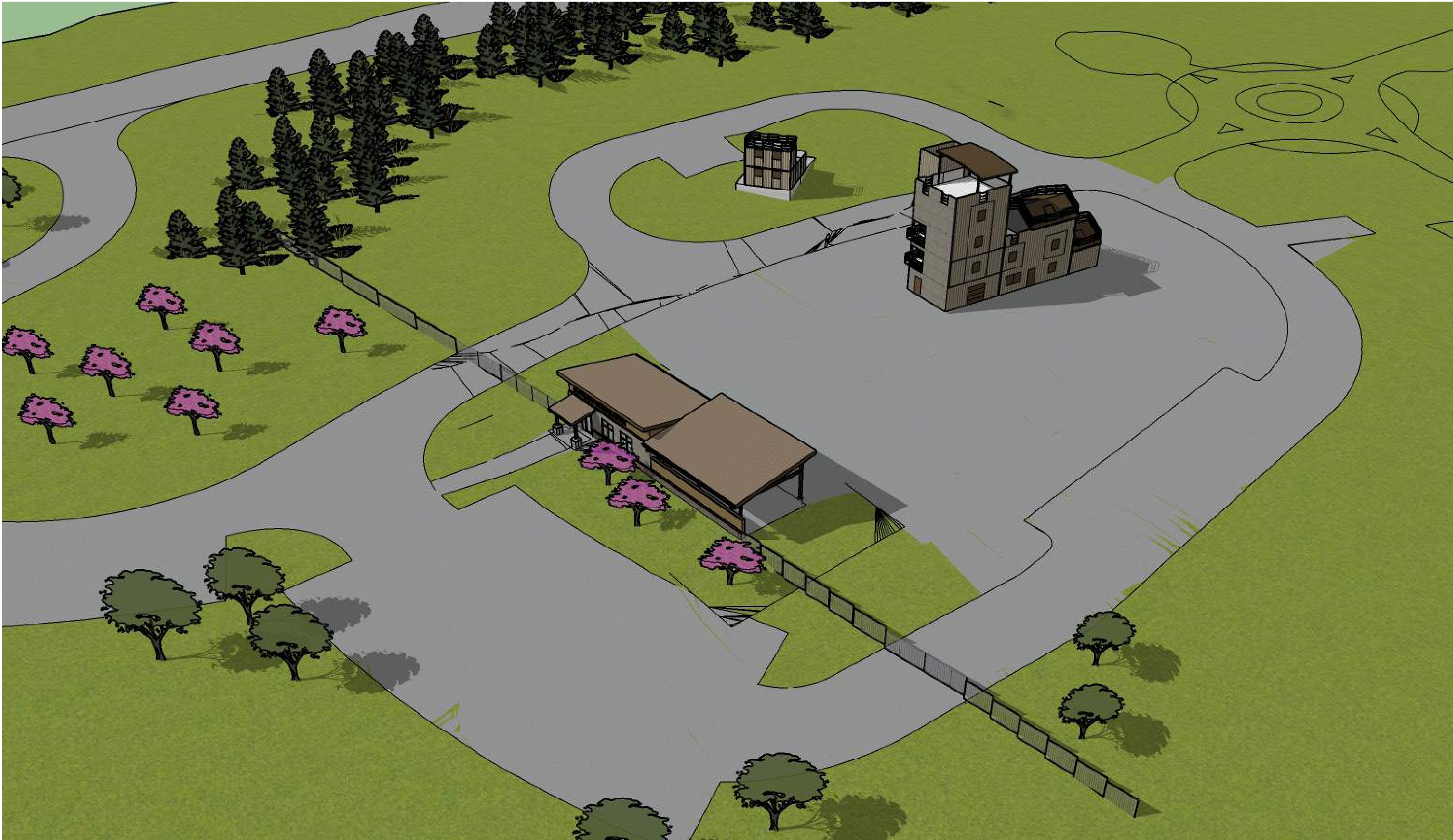
2. PERSPECTIVE VIEW OF FRONT



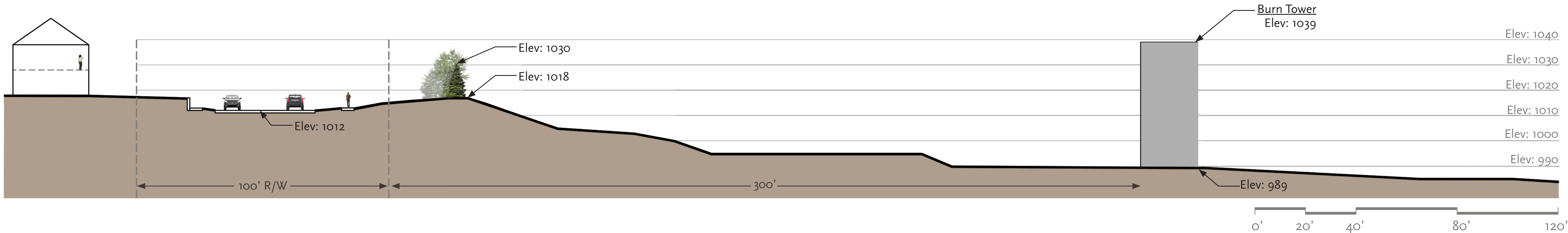
3. VIEW FROM ENTRY DRIVE



2. PERSPECTIVE VIEW OF BACK



AERIAL VIEW



SITE SECTION