

119th Street and I-35 Interchange Reconfiguration Project

Beth Wright

Deputy Director of Public Works

February 18, 2020

Project Background

- Federal TIGER Grant Application - 2015
- Authorized Concept Study – 2016 CIP
- Major Olathe Need and Investment
- Reconfiguration of Existing Diamond to Diverging Diamond (DDI)
- Rehab vs. New

I-35 & 119th Street Interchange

Reconfiguration and Multimodal Improvements

TIGER GRANT PROPOSAL 2015

Primary Contact:
Celia Duran, P.E.
City Engineer
City of Olathe, Kansas – City Hall
1385 S. Robinson, PO BOX 768
Olathe, KS 66051-0768
(913) 971-9061
CJDuran@OLATHEKS.ORG

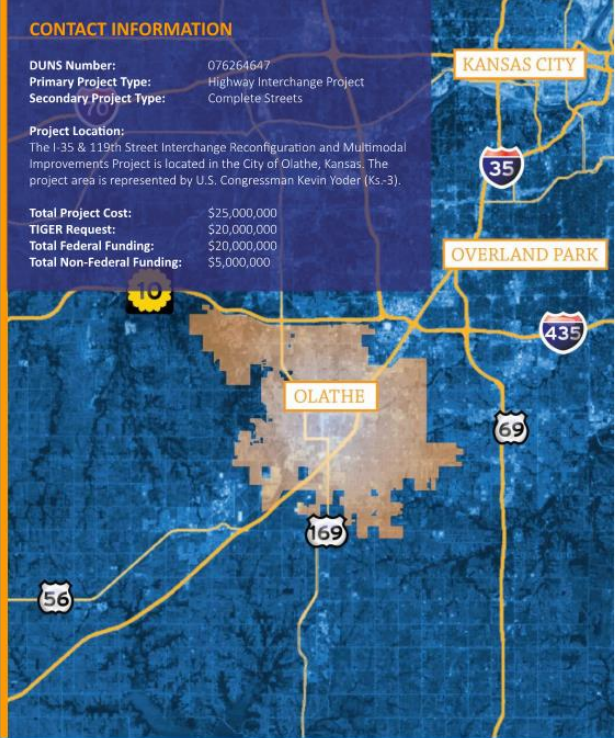
Executive Summary: The I-35 & 119th Street Interchange Reconfiguration and Multimodal Improvements Project will combine a Diverging Diamond Interchange with modal and capacity improvements to improve safe, efficient modal inter- and intra-community connections between jobs and workers for rapidly growing Olathe, Kansas. In the process, it will position Olathe to better take advantage of current and planned regional transit and workforce connection initiatives that will make the community less auto-dependent and better suited to help advance area workers up the local and regional ladders of economic opportunity.

CONTACT INFORMATION

DUNS Number: 076264647
Primary Project Type: Highway Interchange Project
Secondary Project Type: Complete Streets

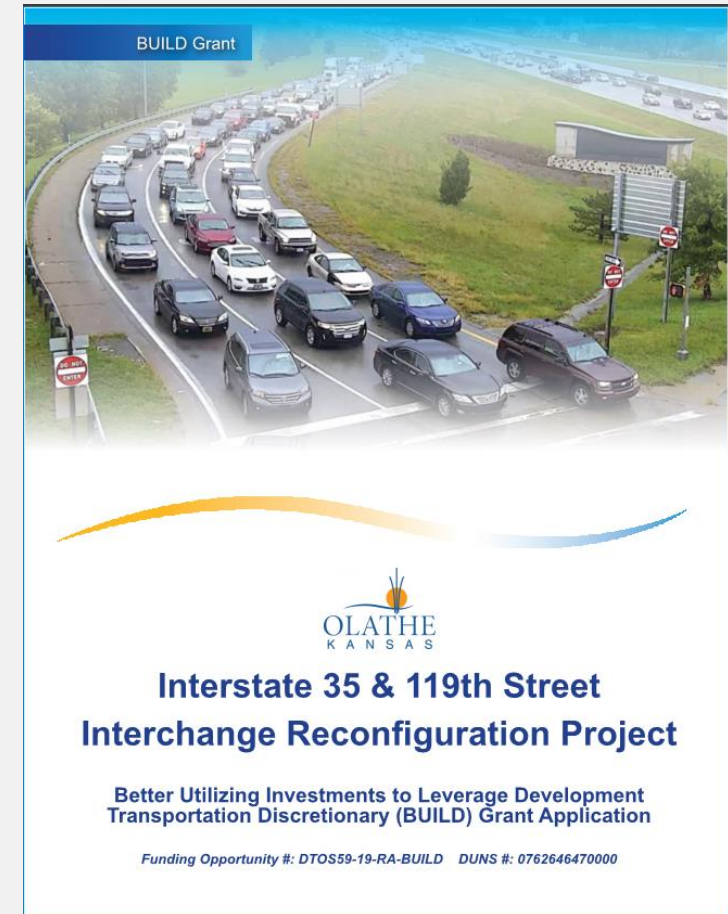
Project Location:
The I-35 & 119th Street Interchange Reconfiguration and Multimodal Improvements Project is located in the City of Olathe, Kansas. The project area is represented by U.S. Congressman Kevin Yoder (Ks-3).

Total Project Cost:	\$25,000,000
TIGER Request:	\$20,000,000
Total Federal Funding:	\$20,000,000
Total Non-Federal Funding:	\$5,000,000



2019 BUILD Grant Summary

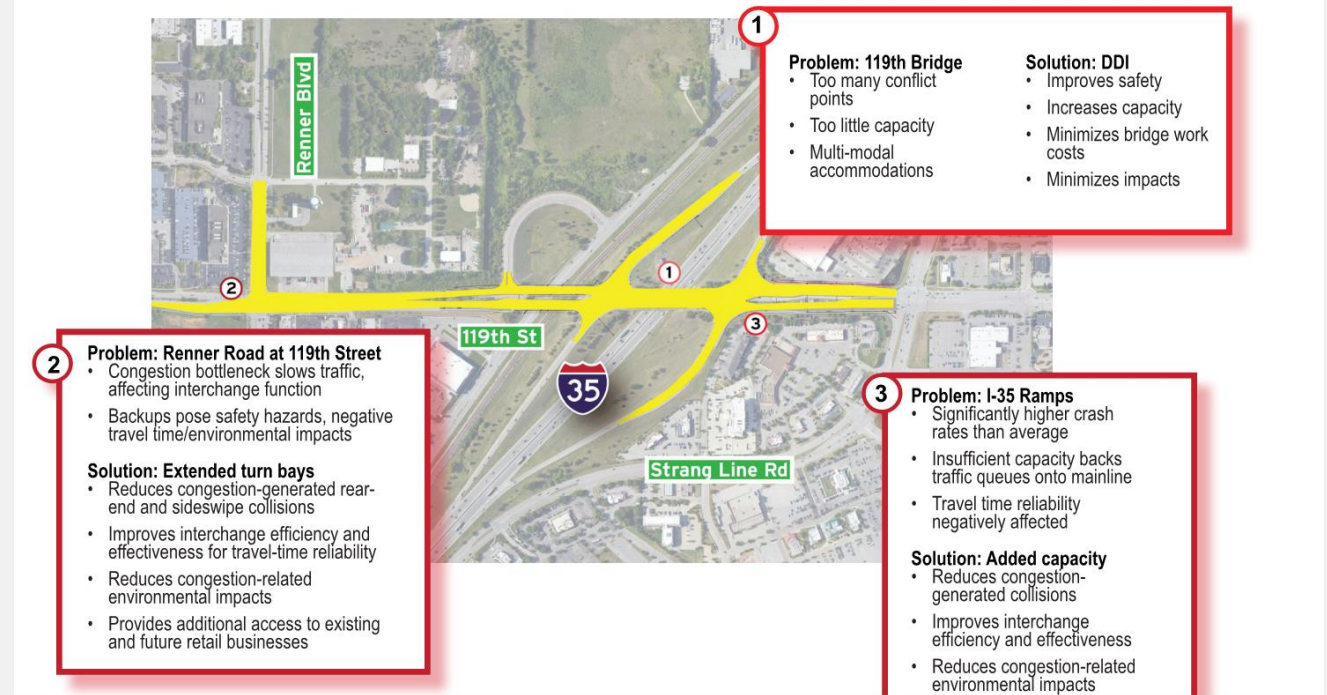
- Better Utilizing Investments to Leverage Development (BUILD)
- \$900M federal investment
- Only awarded to only 55 projects in 35 states
- Olathe received \$10M as requested!
- Special Requirements due to BUILD Grant



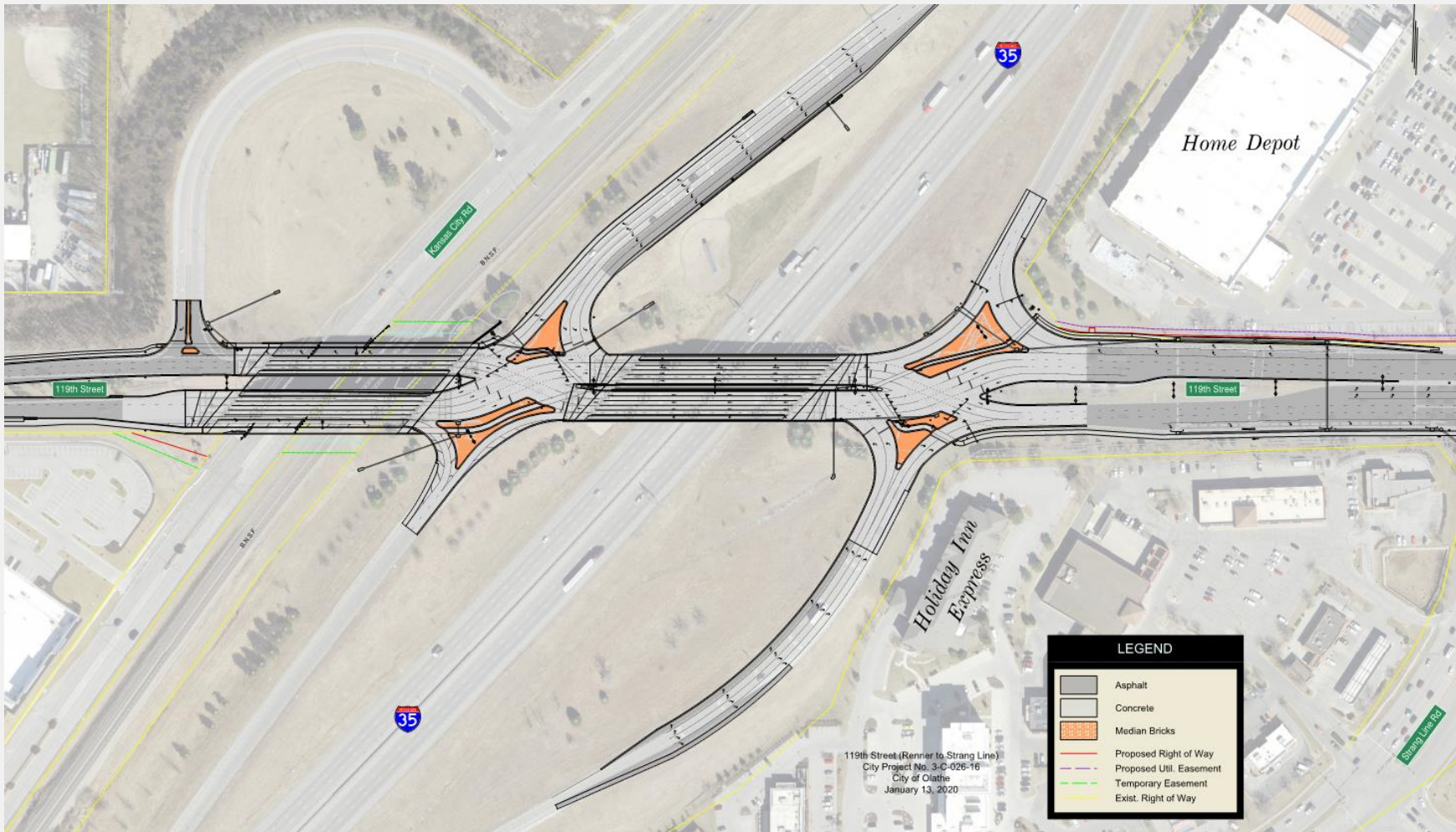
Project Limits/Scope/Budget

- Project is needed to:
 - Address capacity concerns
 - Address safety concerns
 - Pedestrian continuity
 - Economic development
- \$28M Overall Project Cost
 - \$10M Federal BUILD
 - \$5M KDOT
 - \$13M Olathe

Figure 1: Project Scope



Diverging Diamond Interchange



Project Schedule

- Final Design – June 2020
- Land Acquisition – Spring/Summer 2020
- Utility Relocation – Summer/Fall 2020
- Construction – 2021/2022

Aesthetics around Olathe



Aesthetics

- Inspiration
- Connection with City of Olathe Logo
- Connection with Olathe Monument (I-35 SB Off Ramp)
- Bridge Aesthetics
 - I-35 Bridges
 - BNSF Bridges
- Median Landscaping

119th Street Bridges



119th Street Bridge over I-35



119th Street Bridge over I-35 - Before



119th Street Bridge over I-35 – After



119th Street Bridge over I-35 - Before



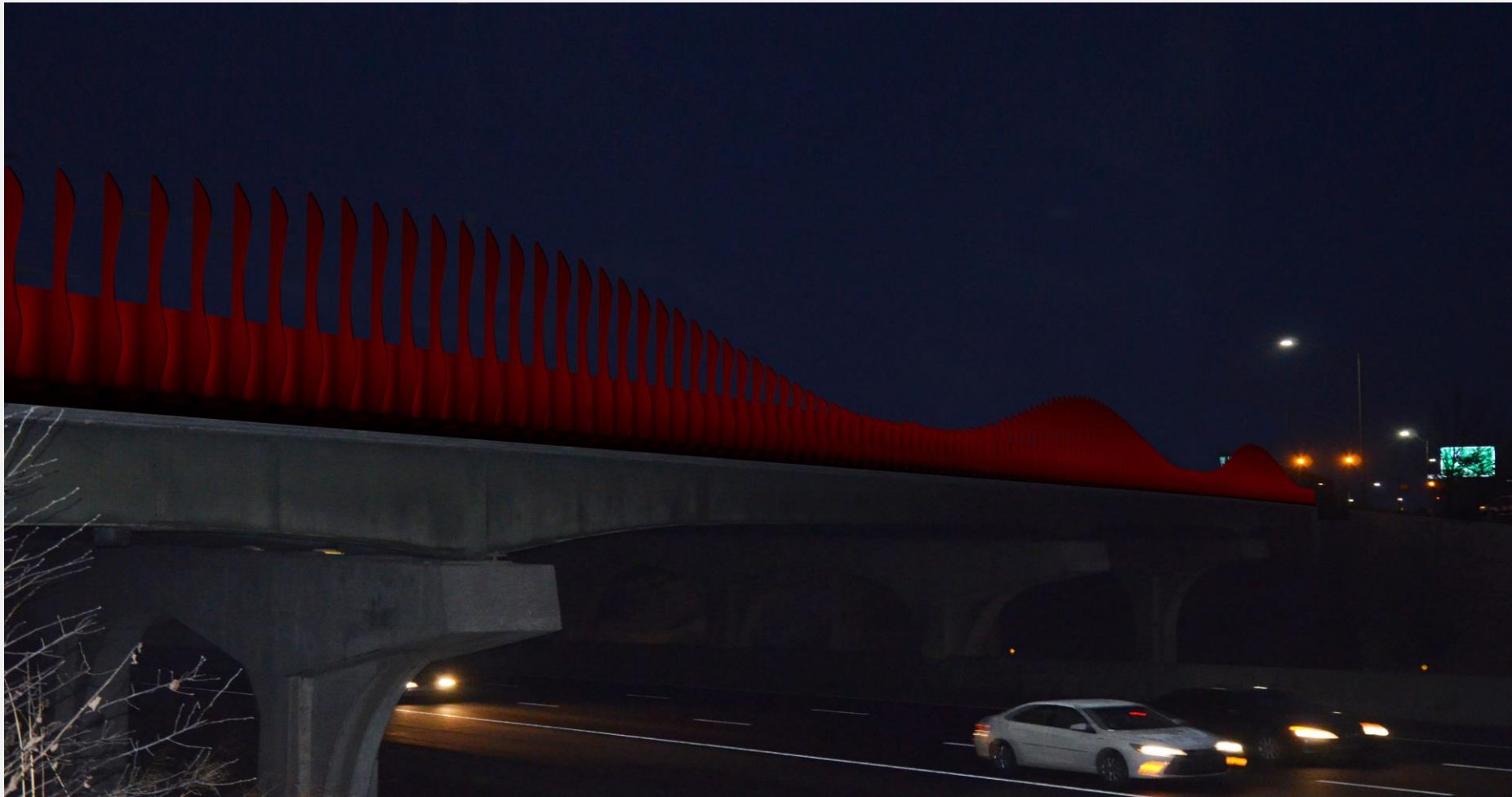
119th Street Bridge over I-35 - After



119th Street Bridge over I-35



119th Street Bridge over I-35



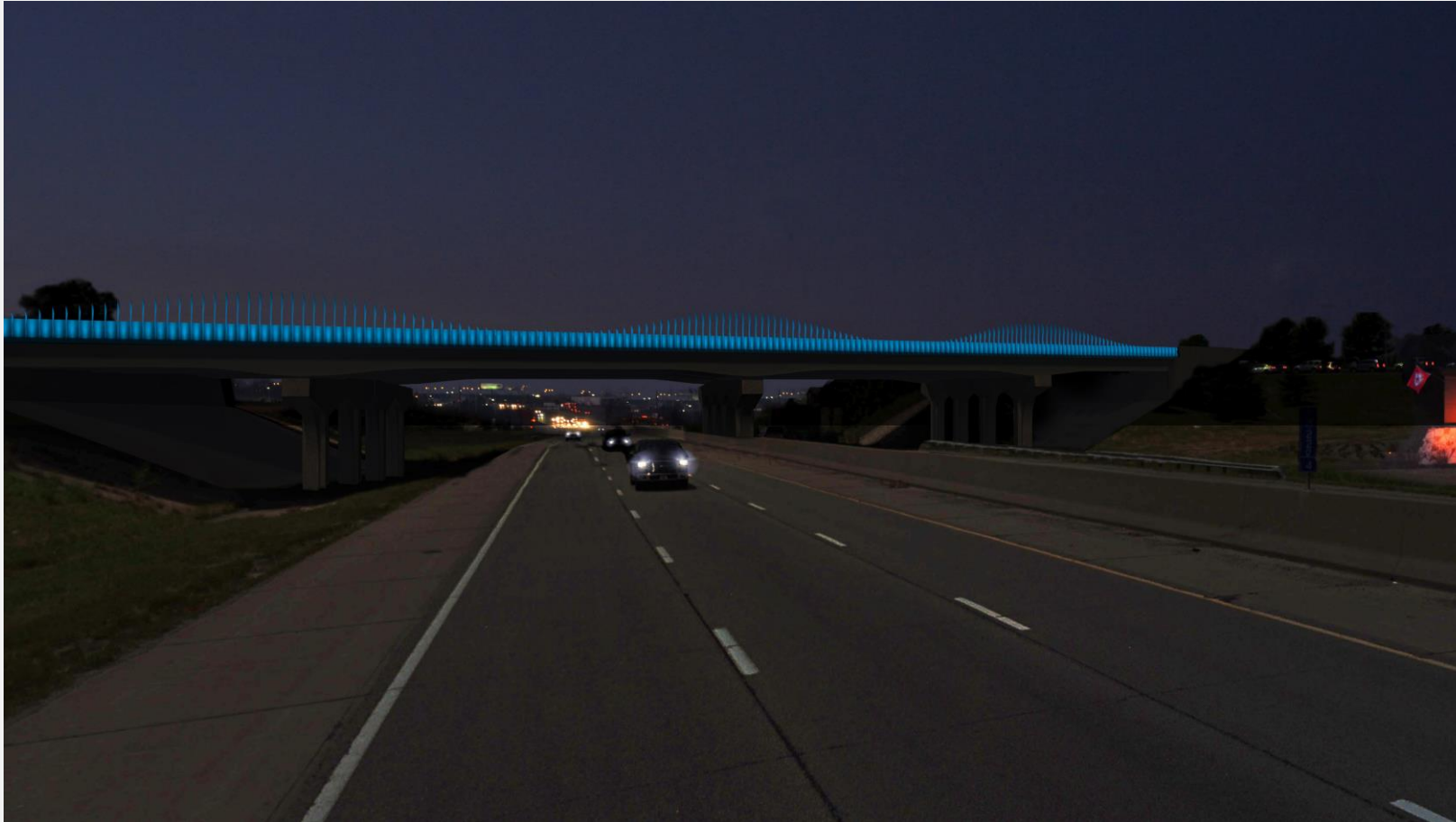
119th Street Bridge over I-35



119th Street Bridge over I-35



119th Street Bridge over I-35



119th Street Bridge over BNSF - before



119th Street Bridge over BNSF - after



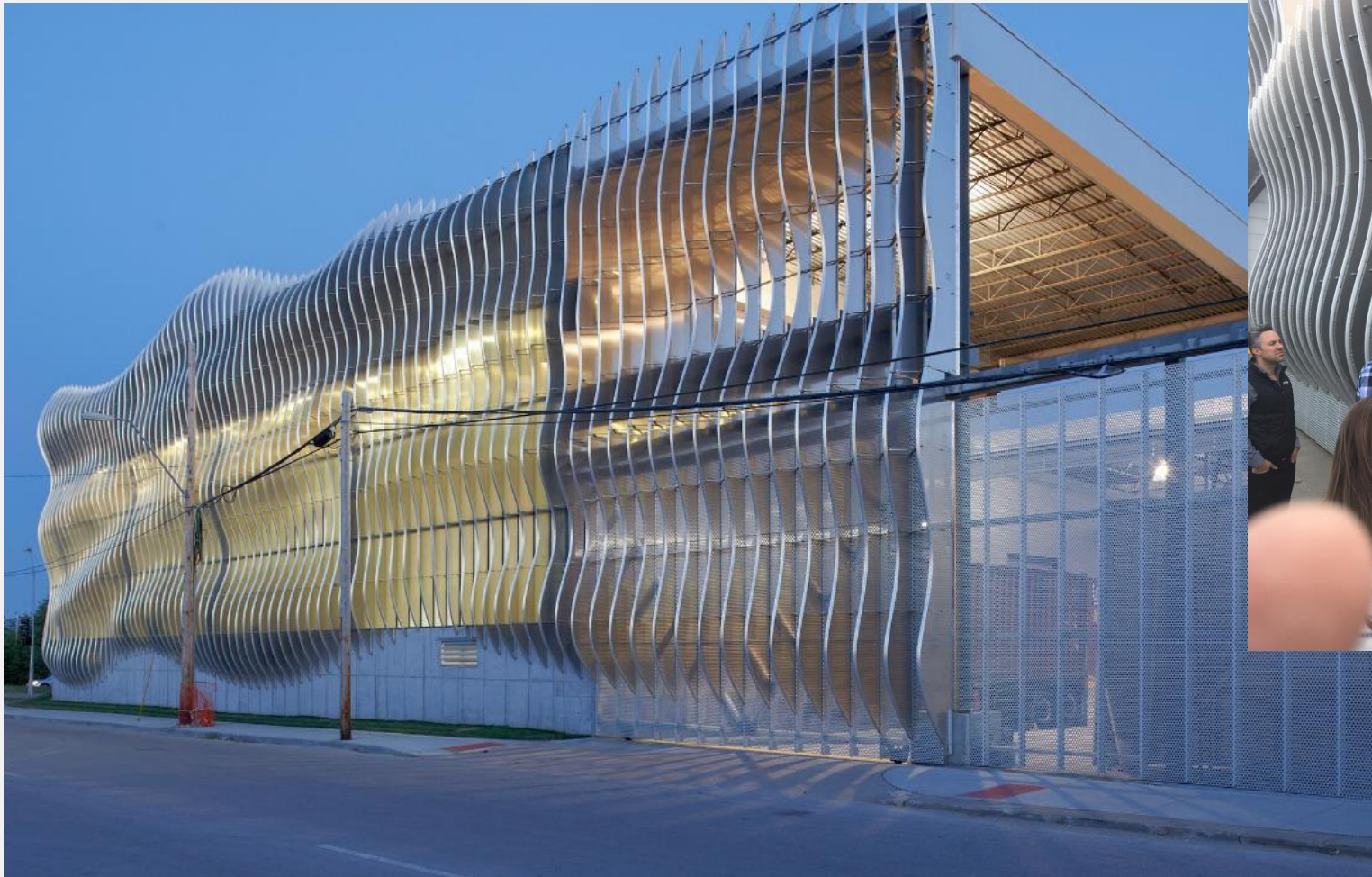
119th Street Bridge over the BNSF



Zahner



Zahner



Landscaping/Medians



Landscaping Medians

