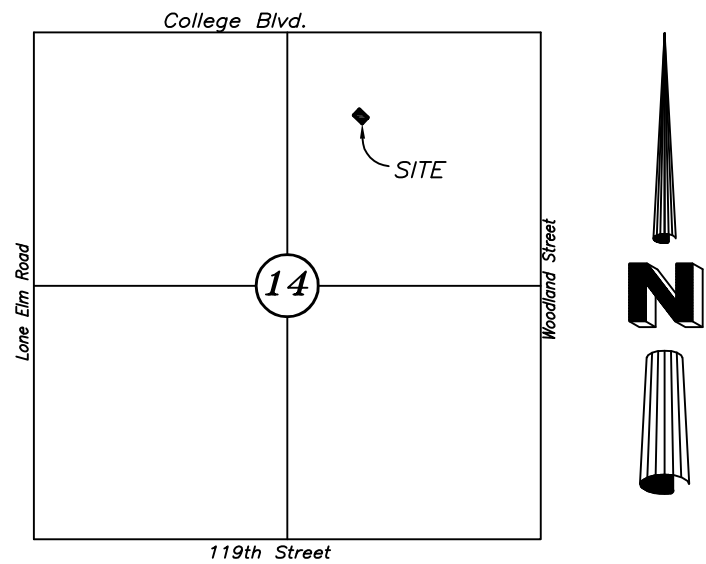


MINOR PLAT OF  
COLLEGE MEADOWS, FIFTH PLAT  
A Replat of Lot 55, COLLEGE MEADOWS, a subdivision  
in the Northeast 1/4 of Section 14. Township 13 South, Range 23 East,  
in the City of Olathe, Johnson County, Kansas



LOCATION MAP  
SEC. 14-13-23  
Scale 1"= 2000'

DESCRIPTION:  
All of Lot 55, COLLEGE MEADOWS THIRD PLAT, a subdivision of land in the City of Olathe, Johnson County, Kansas, according to the College Meadows Third Plat filed in Book 201404 at Page 004408.

The undersigned proprietor of the above described tract of land has caused the same to be subdivided in the manner shown on the accompanying plat which hereinafter shall be known as "COLLEGE MEADOWS, SIXTH PLAT".

DEDICATION

Tract "P", as shown hereon will be owned and maintained by the College Meadows Homes Association. This tract is intended to be used as private open space and common area and may include landscaping, fencing, subdivision monuments, storm water detention and amenities.

RESTRICTIONS

All lots, parcels, tracts and properties in this subdivision shall hereinafter be subject to the Declaration of restrictions for "College Meadows", which instrument is recorded in the Office of the Register of Deeds of Johnson County, Kansas, and which shall hereby become a part of the dedication of this plat as though fully set forth herein.

EXECUTION

IN TESTIMONY WHEREOF, PLK DEVELOPMENT, INC., has caused this instrument to be executed by it's President this \_\_\_\_ day of \_\_\_\_\_, 2020.

PLK DEVELOPMENT, INC.  
Ronald VanLerberg, President

ACKNOWLEDGMENT

STATE OF KANSAS }  
COUNTY OF JOHNSON }

BE IT REMEMBERED that on this \_\_\_\_ day of \_\_\_\_\_, 2020, before me, the undersigned, a Notary Public in and for said County and State, came Ronald VanLerberg, President of PLK Development, Inc., who is personally known to me to be the same person who executed the forgoing instrument of writing on behalf of said Corporation, and said person duly acknowledged the execution of same to be the act and deed of same Corporation.

IN WITNESS WHEREOF, I have hereunto set my hand and affixed my official seal the day and year last above written.

NOTARY PUBLIC: Jerald W. Pruitt

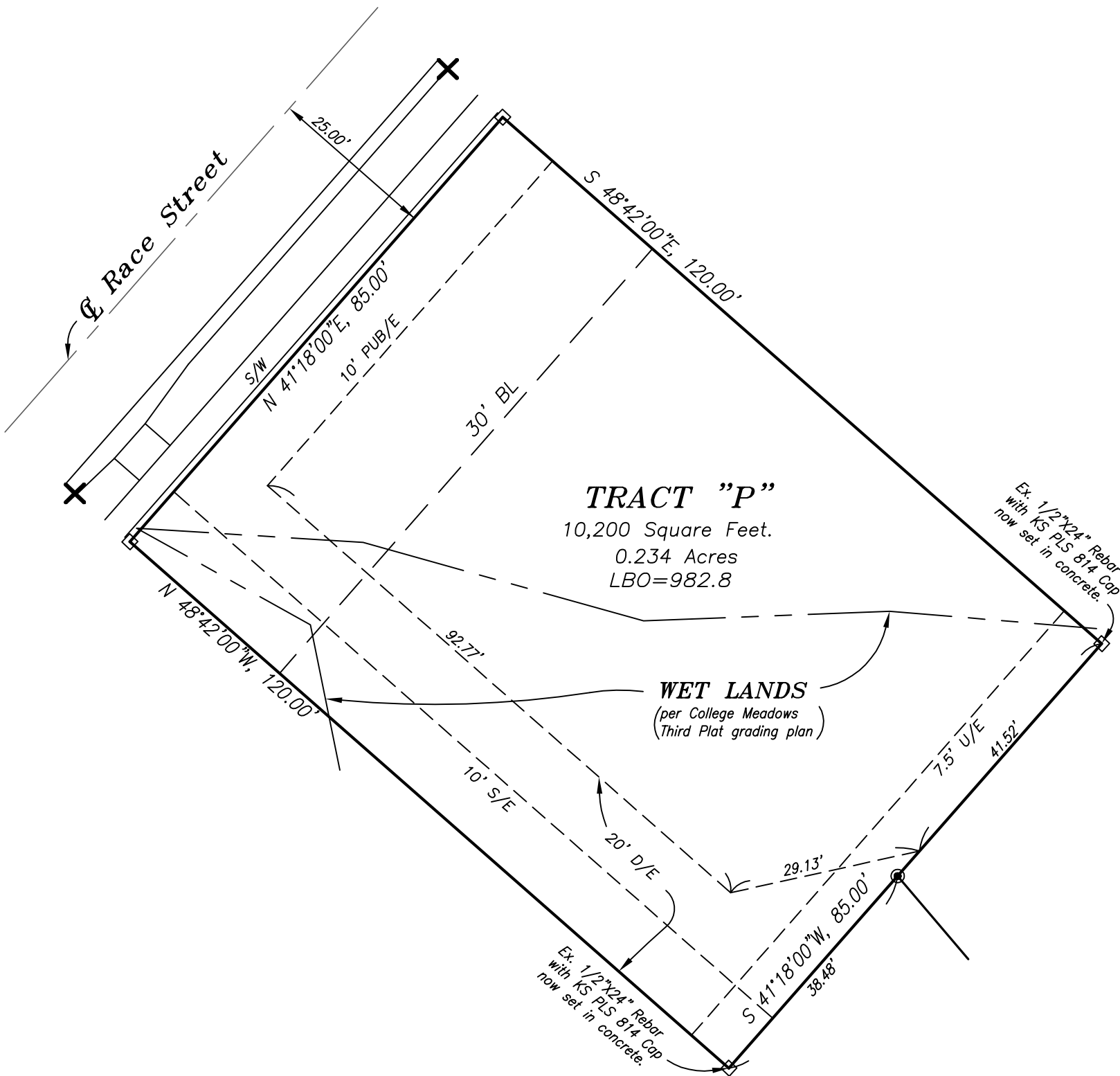
My Appointment Expires: October 29, 2020

APPROVALS

APPROVED by the Planning Commission of the City of Olathe, Johnson County, Kansas, this \_\_\_\_ day of \_\_\_\_\_, 2020 .

Chairman: C.S. Vakas

This survey was completed in the field in December, 2019 under my direct supervision, and to the best of my knowledge and belief, this plat correctly portrays the results of the survey of the above described property.  
Jerald W. Pruitt, PS 814  
February



LEGEND

- ✕ Indicates Existing Plus Cuts on curb, unless otherwise noted.
- Indicates Existing 1/2" X 24" Rebar with KS PLS 814 Cap.
- Indicates set 1/2" X 24" Rebar with KS PS 814 Cap set in concrete, unless otherwise noted.
- B.L. = Building Line
- D/E = Drainage Easement
- U/E = Utility Easement
- S/W = Proposed Sidewalk
- PUB/E = Public Utility Easement

SURVEYOR'S NOTES

Bearings are based on the COLLEGE MEADOWS THIRD PLAT, subdivision plat, filed in Book 201404 at Page 004408.

The easements shown on this plat were dedicated by the COLLEGE MEADOWS THIRD PLAT, subdivision plat filed in Book 201404 at Page 004408.

The subject property is outside the established flood plain according to the Federal Emergency Management Agency's Flood Map No. 20091C0063 G. Revised map date: August 3, 2009.

DEVELOPER:  
PLK Development, Inc.  
20525 College Blvd.  
Olathe, KS 66061

Scale 1"= 20'



COLLEGE MEADOWS  
SIXTH PLAT

N.E. 1/4, Section 14, Township 13 South, Range 23 East  
Olathe, Johnson County, Kansas

PRUITT and DOOLEY SURVEYING, LLC  
7912 Elm Ave. 10777 Barkley, Suite 220-I  
Raytown, MO 64138 Overland Park, KS 66211  
816-699-4239 913-652-9002

Job No. 19-1205, December, 2019, Revised Jan. 25, 2020  
College Meadows Sixth Plat.dwg

1 SHEET  
OF 1