

Exterior Materials and Finishes

Stucco  
Color 1: SW 7014 Elder White  
EIFS  
Color 2: SW 9168 Elephant Ear  
Color 3: SW 7551 Greek Villa  
Masonry  
Brick: Glen-Gery - color: Atlas  
Stone: Midwest Cast Stone 24" x 12", 1A with Solomon Colors, White 60H Mortar, or approved equal  
Pre-Finished Canopy  
Mapes Lumlshade, finish - dark bronze, or approved equal  
Glass  
1" insulated, low E glass with argon gas fill Solarban 60 (2) - clear (or approved equal to meet U-Value of 0.29)  
Storefront  
Anodized aluminum frame, finish - dark bronze  
Hollow Metal Doors  
Painted to match dark bronze finish of storefront system  
Flashing  
Prefinished metal cap flashing, Firestone or approved equal - color: to match Color 1  
Caulk  
Match adjacent wall color

South Facade Material Matrix

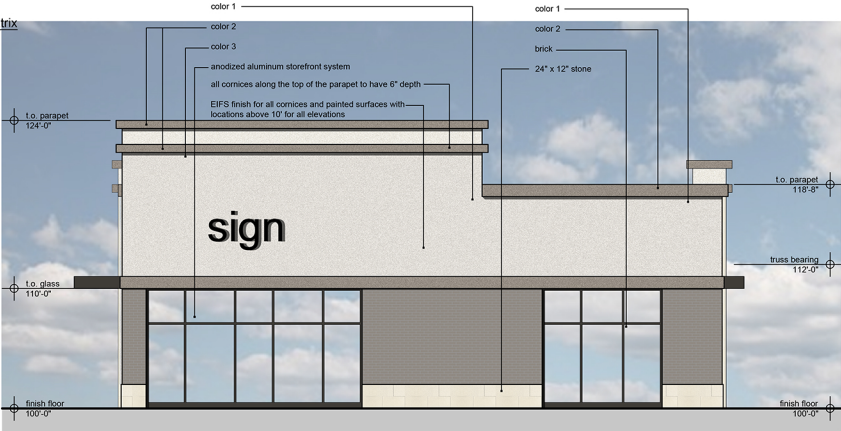
Total Facade Area: 1,903 sq. ft.  
EIFS: 195 sq. ft., 10%  
Stucco: 516 sq. ft., 27%  
Masonry  
Brick: 60 sq. ft., 4%  
Stone: 276 sq. ft., 15%  
Total: 336 sq. ft., 19%  
Pre-Finished Canopy: 76 sq. ft., 4%  
Glass & Storefront: 760 sq. ft., 40%



1 | South Elevation  
scale: 3/16" = 1'-0"

East Facade Material Matrix

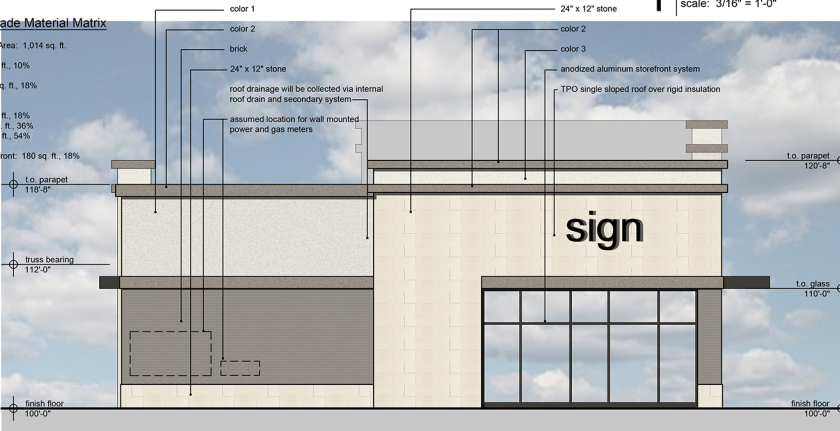
Total Facade Area: 1,095 sq. ft.  
EIFS: 102 sq. ft., 9%  
Stucco: 493 sq. ft., 45%  
Masonry  
Brick: 176 sq. ft., 16%  
Stone: 44 sq. ft., 4%  
Total: 220 sq. ft., 20%  
Glass & Storefront: 280 sq. ft., 26%



3 | East Elevation  
scale: 3/16" = 1'-0"

West Facade Material Matrix

Total Facade Area: 1,014 sq. ft.  
EIFS: 102 sq. ft., 10%  
Stucco: 182 sq. ft., 18%  
Masonry  
Brick: 184 sq. ft., 18%  
Stone: 366 sq. ft., 36%  
Total: 550 sq. ft., 54%  
Glass & Storefront: 180 sq. ft., 18%



2 | West Elevation  
scale: 3/16" = 1'-0"

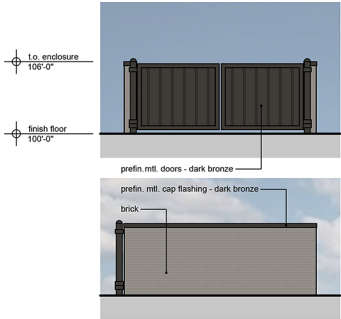
North Facade Material Matrix

Total Facade Area: 1,743 sq. ft.  
EIFS: 142 sq. ft., 8%  
Stucco: 431 sq. ft., 25%  
Masonry  
Brick: 248 sq. ft., 14%  
Stone: 419 sq. ft., 24%  
Total: 667 sq. ft., 38%  
Pre-Finished Canopy: 44 sq. ft., 3%  
Hollow Metal Door: 24 sq. ft., 1%  
Glass & Storefront: 435 sq. ft., 25%



4 | North Elevation  
scale: 3/16" = 1'-0"

5 | Trash Enclosure  
scale: 3/16" = 1'-0"



a new development for  
151st & Blackbob  
Olathe, Kansas

date 01.15.2020  
drawn by dAE  
checked by dAE  
revisions  
02.14.2020 1  
02.21.2020 2