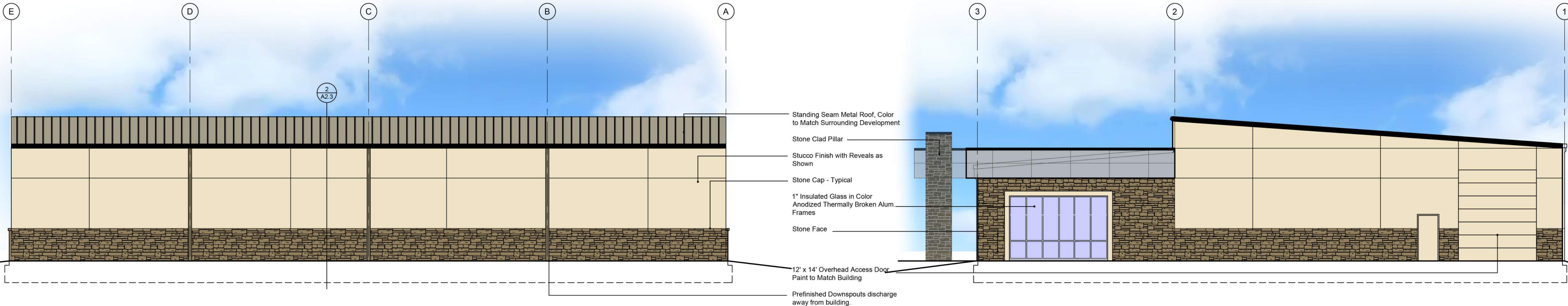


1
South Elevation - Headquarters Building
scale: 1/8" = 1'-0"

2
East Elevation - Headquarters Building
scale: 1/8" = 1'-0"



3
West Elevation - Headquarters Building
scale: 1/8" = 1'-0"

4
North Elevation - Headquarters Building
scale: 1/8" = 1'-0"

building material percentages:

East Elevation Area:	2,443 sq. ft.
glass:	944 sq. ft. (39%)
architectural metal:	732 sq. ft. (30%)
stucco:	357 sq. ft. (15%)
stone:	381 sq. ft. (16%)

South Elevation Area:	1733 sq. ft.
glass:	151 sq. ft. (9%)
architectural metal:	147 sq. ft. (8%)
stucco:	784 sq. ft. (45%)
stone:	474 sq. ft. (27%)
doors:	192 sq. ft. (11%)

North Elevation Area:	1733 sq. ft.
glass:	151 sq. ft. (9%)
architectural metal:	147 sq. ft. (8%)
stucco:	784 sq. ft. (45%)
stone:	450 sq. ft. (26%)
doors:	216 sq. ft. (12%)

West Elevation Area:	2,443
glass:	0 sq. ft.
architectural metal:	0 sq. ft.
stucco:	1,357 sq. ft. (56%)
stone:	552 sq. ft. (23%)
metal roof:	532 sq. ft. (21%)

Proposed Final Development Plan for
Lot 6, Garmin Olathe Soccer Complex
Lot 6 GOSC
Olathe, Kansas

date	09.19.2019
drawn by	JED
checked by	DAE
revisions	
11.22.2019	1
01.28.2020	2

sheet number

A2.2

drawing type

project number
19027