

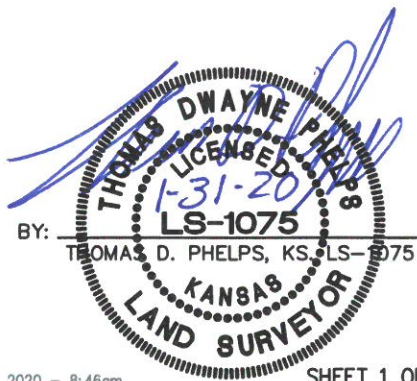
EXHIBIT "A"
WATERLINE EASEMENT VACATION
PART OF THE S.E. 1/4 SECTION 5, T. 14 S., R. 24 E.,
BEING PART OF LOT 3, PRAIRIE TRAILS WEST II
IN THE CITY OF OLATHE, JOHNSON COUNTY, KANSAS.

DESCRIPTION:

ALL THAT PART OF A PLATTED 15' WIDE WATER LINE EASEMENT BEING PART OF LOT 3, PRAIRIE TRAILS WEST II, A PLATTED SUBDIVISION OF LAND IN PART OF THE SOUTHEAST QUARTER OF SECTION 5, TOWNSHIP 14 SOUTH, RANGE 24 EAST, IN THE CITY OF OLATHE, JOHNSON COUNTY, KANSAS, BEING MORE PARTICULARLY DESCRIBED AS FOLLOWS:

COMMENCING AT THE SOUTHWEST CORNER SAID LOT 3; THENCE N 00°00'57" E ALONG THE WEST LINE OF SAID LOT 3, A DISTANCE OF 165.55 FEET; THENCE S 89°59'03" E, A DISTANCE OF 24.20 FEET TO A POINT ON THE NORTHERLY LINE OF A 15.00 FOOT WIDE WATERLINE EASEMENT AS SHOWN ON SAID PRAIRIE TRAILS WEST II, SAID POINT BEING THE POINT OF BEGINNING; THENCE S 89°53'43" E A DISTANCE OF 11.00 FEET; THENCE S 00°06'17" W, A DISTANCE OF 15.00 FEET; THENCE N 89°53'43" W, A DISTANCE OF 11.00 FEET; THENCE N 00°06'17" E, A DISTANCE OF 15.00 FEET TO THE POINT OF BEGINNING, CONTAINING 165 SQUARE FEET, MORE OR LESS, OF EXISTING WATERLINE EASEMENT TO BE VACATED.

I HEREBY CERTIFY THAT THIS REAL
PROPERTY LEGAL DESCRIPTION HAS
BEEN PREPARED BY ME OR UNDER
MY DIRECT SUPERVISION.



\\PHELPS-SERVER\Projects\P\191034\dwg\Easements\waterline easements.dwg Layout: VAC 1 Jan 31, 2020 - 8:46am

SHEET 1 OF 2



PLANNING
ENGINEERING
IMPLEMENTATION

PHELPS ENGINEERING, INC (913) 393-1155
1270 N. Winchester Fax (913) 393-1166
Olathe, Kansas 66061 www.phelpsenengineering.com

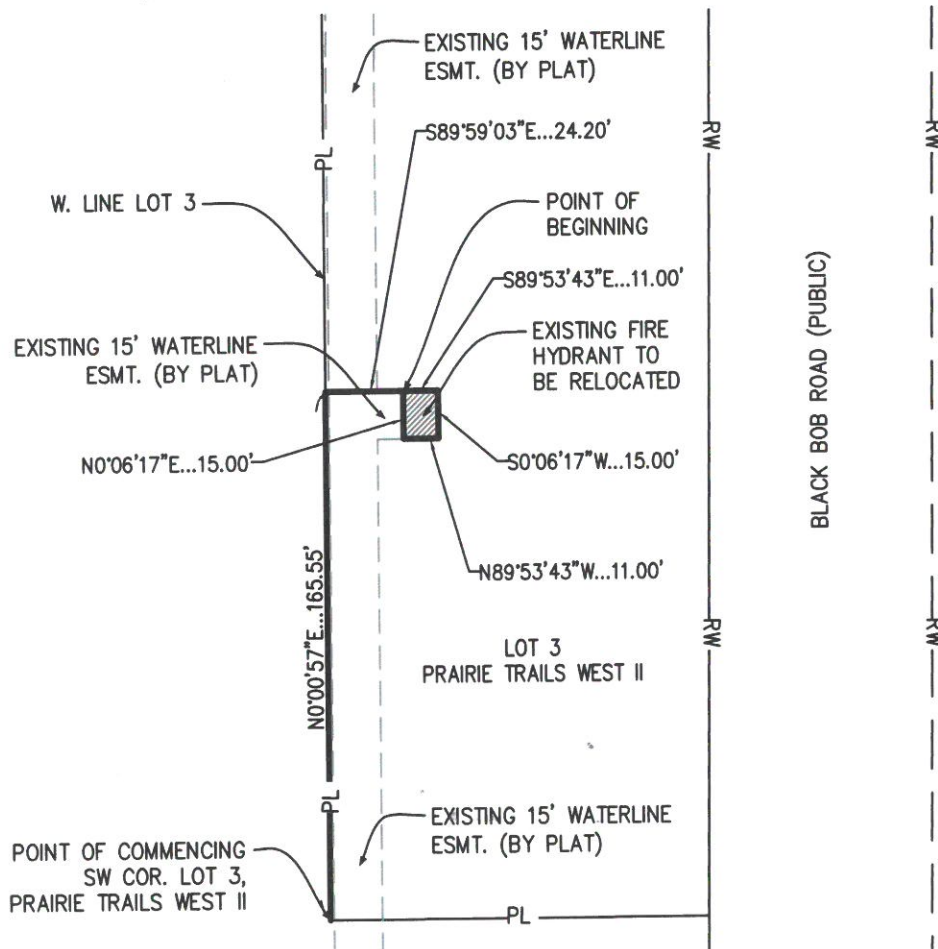
CERTIFICATE OF AUTHORIZATION KANSAS LAND
SURVEYING - LS-82
ENGINEERING - E-391
CERTIFICATE OF AUTHORIZATION MISSOURI
LAND SURVEYING-2007001128
ENGINEERING-2007005058

PROJECT NO. 191034
DATE: 1/30/2020
BY: DAF

EXHIBIT "A"

WATERLINE EASEMENT VACATION

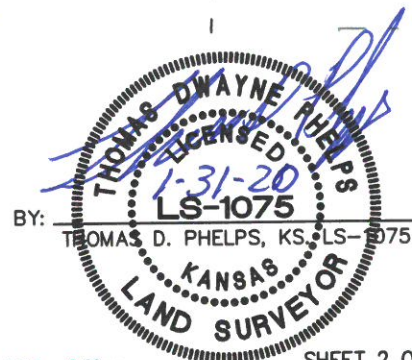
PART OF THE S.E. 1/4 SECTION 5, T. 14 S., R. 24 E., BEING PART OF LOT 3, PRAIRIE TRAILS WEST II IN THE CITY OF OLATHE, JOHNSON COUNTY, KANSAS.



SCALE: 1"=60'



I HEREBY CERTIFY THAT THIS REAL
PROPERTY LEGAL DESCRIPTION HAS
BEEN PREPARED BY ME OR UNDER
MY DIRECT SUPERVISION.



\\PHELPS-SERVER\Projects\P\191034\dwg\Easements\waterline easements.dwg Layout: VAC 2 Jan 31, 2020 - 8:00am

SHEET 2 OF 2



PLANNING
ENGINEERING
IMPLEMENTATION

PHELPS ENGINEERING, INC (913) 393-1155
1270 N. Winchester Fax (913) 393-1166
Olathe, Kansas 66061 www.phelpsengineering.com

CERTIFICATE OF AUTHORIZATION KANSAS LAND
SURVEYING - LS-82
ENGINEERING - E-391
CERTIFICATE OF AUTHORIZATION MISSOURI
LAND SURVEYING-2007001128
ENGINEERING-2007005058

PROJECT NO. 191034
DATE: 1/30/2020
BY: DAF