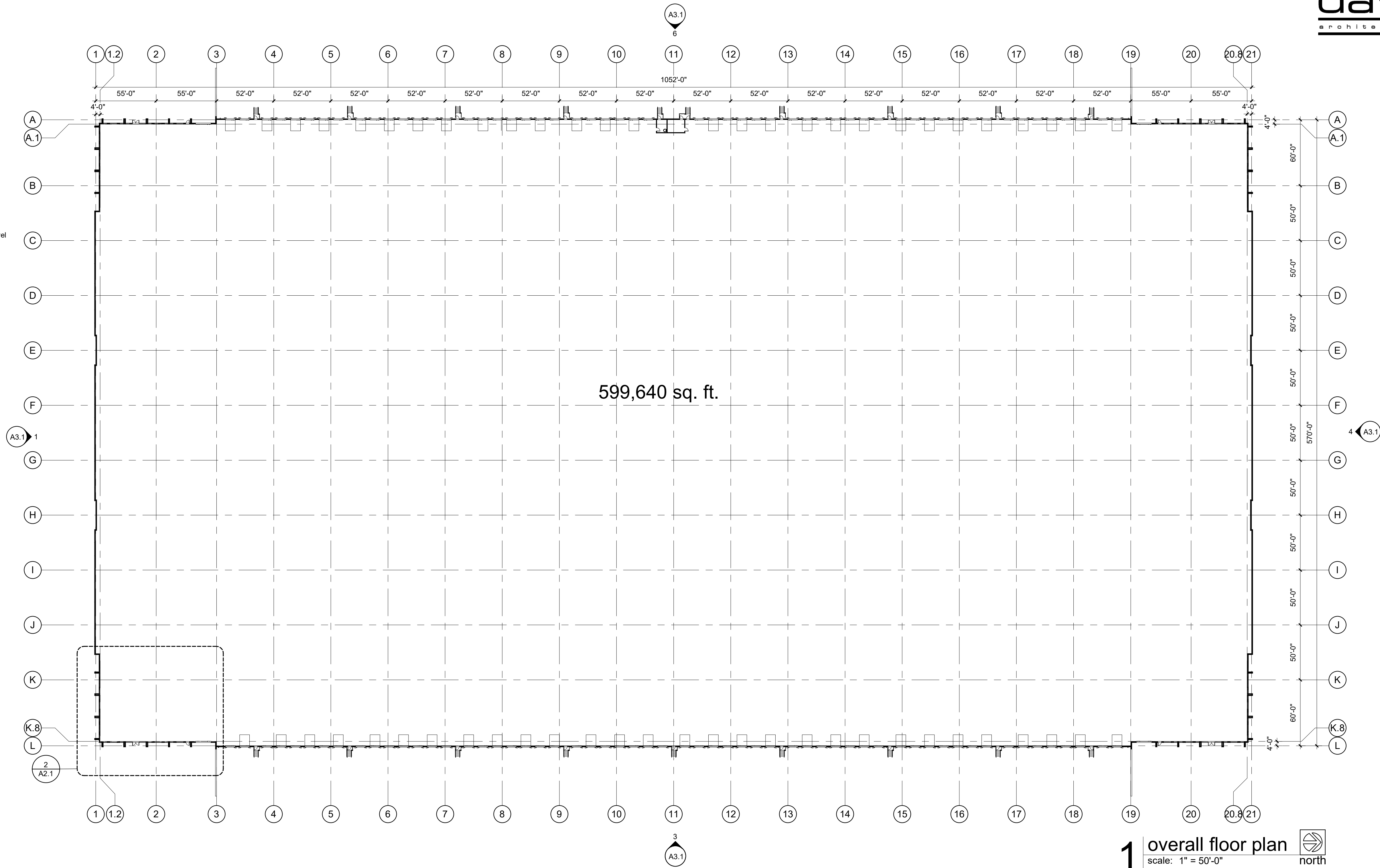
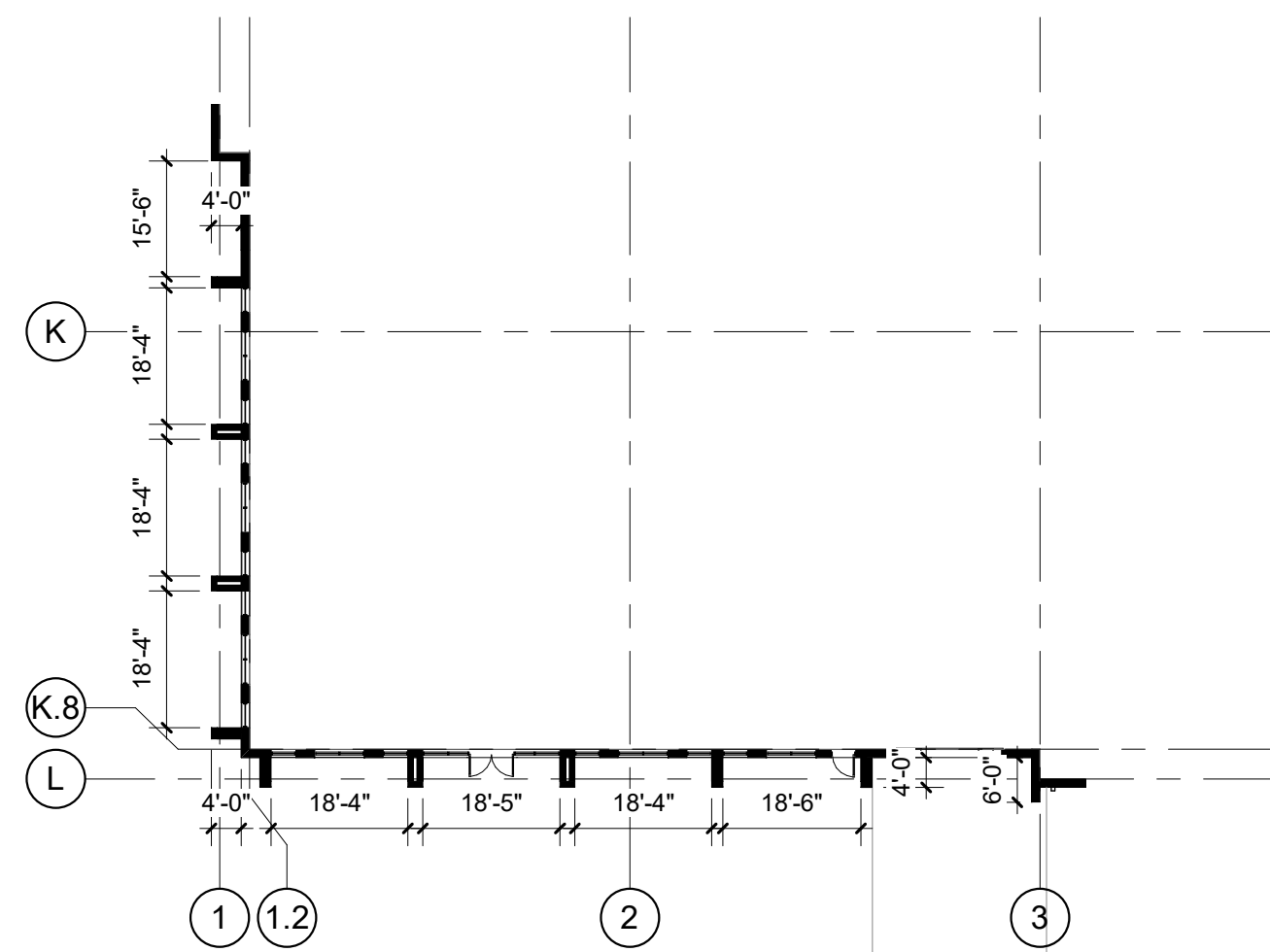


general notes

- Double keyed locks are not permitted on any required or marked exit.
- Exit/emergency lighting are subject to an on site inspection.
- HVAC system to have approved interconnected, smoke detector activated, automatic shutoffs w/ the detectors located in the return duct.
- HVAC rooftop units shall have an accessible GFCI outlet per code.
- Building construction must fully comply with all requirements of ADA/ANSI accessibility guidelines.
- Provide 3 1/2" batt insulation between conditioned & unconditioned spaces.
- Exit doors shall be openable from the inside without the use of a key or any special knowledge or effort.
- Furnish and install electrical outlets @ 15" a.f.f. to the lowest outlet per ADA/ANSI.
- Egress illumination shall be provided at an intensity of not less than 1 foot candle at floor level & at the exterior of the building.
- Provide 44" minimum clear in all exit passageways.
- All exterior utility service equipment shall be painted to match the building standard color(s).
- Furnish and install horns and strobes as required.
- All electrical outlets within 6' of any sink or water source to be GFCI protected.
- Construction materials exposed within plenums shall be non-combustable or shall have a flame spread rating of not more than 25 and a smoke developed rating of not more than 50.
- All low voltage wire and cable, optical fiber, pneumatic tubing, and all ducts and duct coverings, linings and connectors installed within plenum areas must be rated for plenum use.
- Furnish and install data/voice rough-in throughout per tenant requirements.
- Furnish and install approved address numbers on front and rear of building in contrasting color.
- Furnish and install required signage for accessible elements in accordance with 2012 IBC, Section 1110.



1 overall floor plan
scale: 1" = 50'-0"



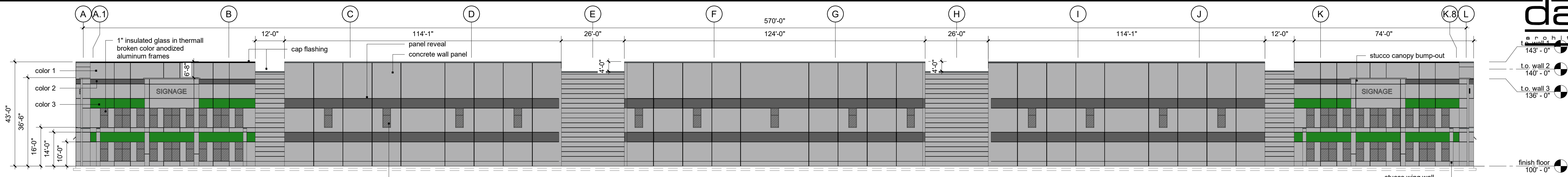
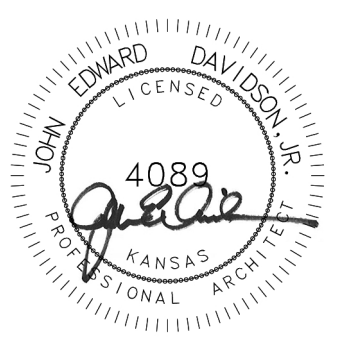
2 enlarged corner entrance
scale: 1:300

a new development for I-35 Logistics Park Olathe, Kansas

date
12.12.2019
drawn by
kka
checked by
dAE
revisions
03.20.2020

sheet number
A2.1
drawing type
preliminary
project number
18198

not for construction



1 north elevation - building D
scale: 3/64" = 1'-0"

exterior materials and finishes

concrete wall panel:
color 1: Mindful Gray SW 7016
color 2: Summit Gray SW 7669
color 3: Envy SW 6925

EIFS:
color 1: Mindful Gray SW 7016

pre-engineered metal canopy:
color 1: gray

storefront:
anodized aluminum frames, finish - stainless steel

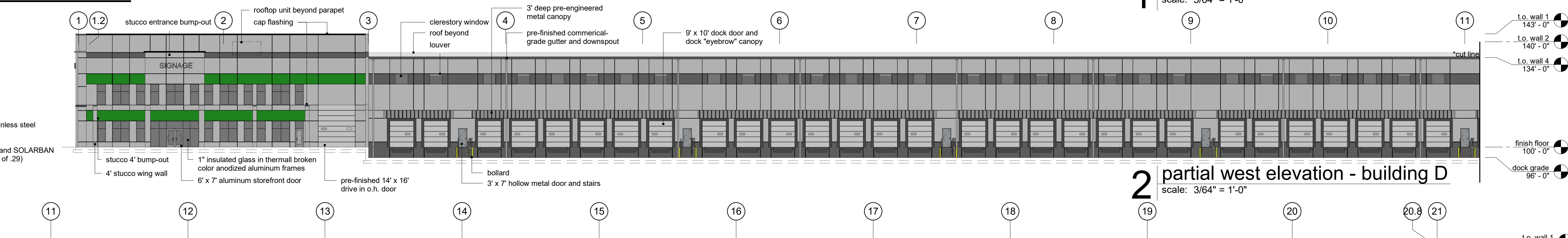
glass:
1" insulated, low E glass with argon fill and SOLARBAN
60 (2) - clear (or equal to meet U-value of .29)

hollow metal doors:
painted to match adjacent walls

overhead doors:
pre-finished metal doors

prefinished aluminum cap flashing:
color 1: Firestone Slate Gray

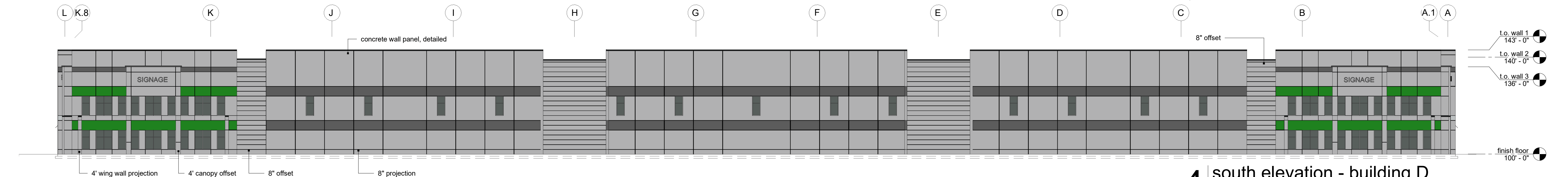
caulk:
color: painted to match building



2 partial west elevation - building D
scale: 3/64" = 1'-0"



3 partial west elevation - building D
scale: 3/64" = 1'-0"



4 south elevation - building D
scale: 3/64" = 1'-0"

material calculations

North/South elevations:

Overall wall area: 24,282 sq. ft. 100%

Category 1: clear glazing, stucco, concrete(detailed)
Glazing area: 1,647 sq. ft. 7%
Stucco area: 1,782 sq. ft. 7%
Concrete: 20,853 sq. ft. 86%
Total Category 1: 100%

Category 2: clear glazing, stucco, concrete(detailed)
Glazing area: 1,647 sq. ft. 7%
Stucco area: 1,782 sq. ft. 7%
Concrete: 20,853 sq. ft. 86%
Total Category 2: 100%

Category 3: none

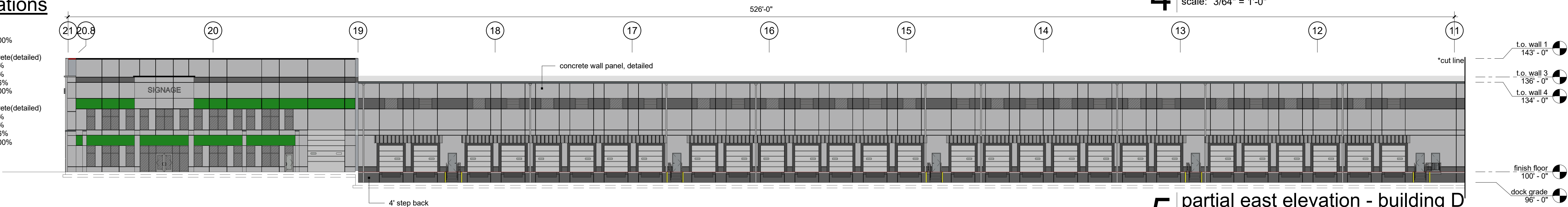
East/West elevations:

Overall wall area: 41,132 sq. ft.

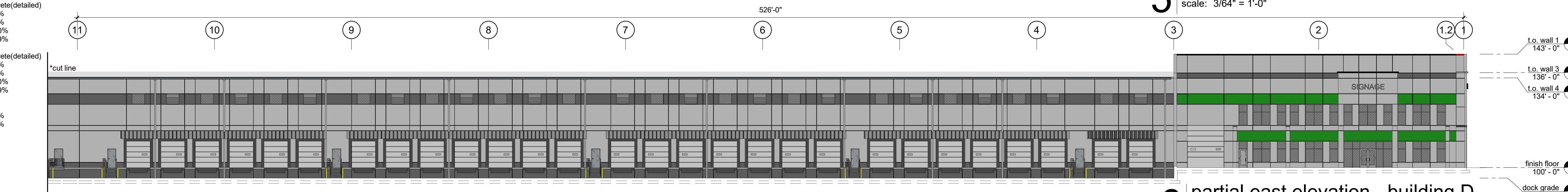
Category 1: clear glazing, stucco, concrete(detailed)
Glazing area: 2,256 sq. ft. 5%
Stucco area: 1,782 sq. ft. 4%
Concrete: 32,852 sq. ft. 80%
Total Category 1: 89%

Category 2: clear glazing, stucco, concrete(detailed)
Glazing area: 2,256 sq. ft. 5%
Stucco area: 1,782 sq. ft. 4%
Concrete: 32,852 sq. ft. 80%
Total Category 2: 89%

Category 3: corrugated metal
Metal area: 2,184 sq. ft. 5%
Total Category 3: 5%



5 partial east elevation - building D
scale: 3/64" = 1'-0"



6 partial east elevation - building D
scale: 3/64" = 1'-0"

a new development for
I-35 Logistics Park
Olathe, Kansas

date
12.12.2019
drawn by
dm
checked by
dAE
revisions
03.20.2020

sheet number

A3.1

drawing type
preliminary
project number
18198

not for construction