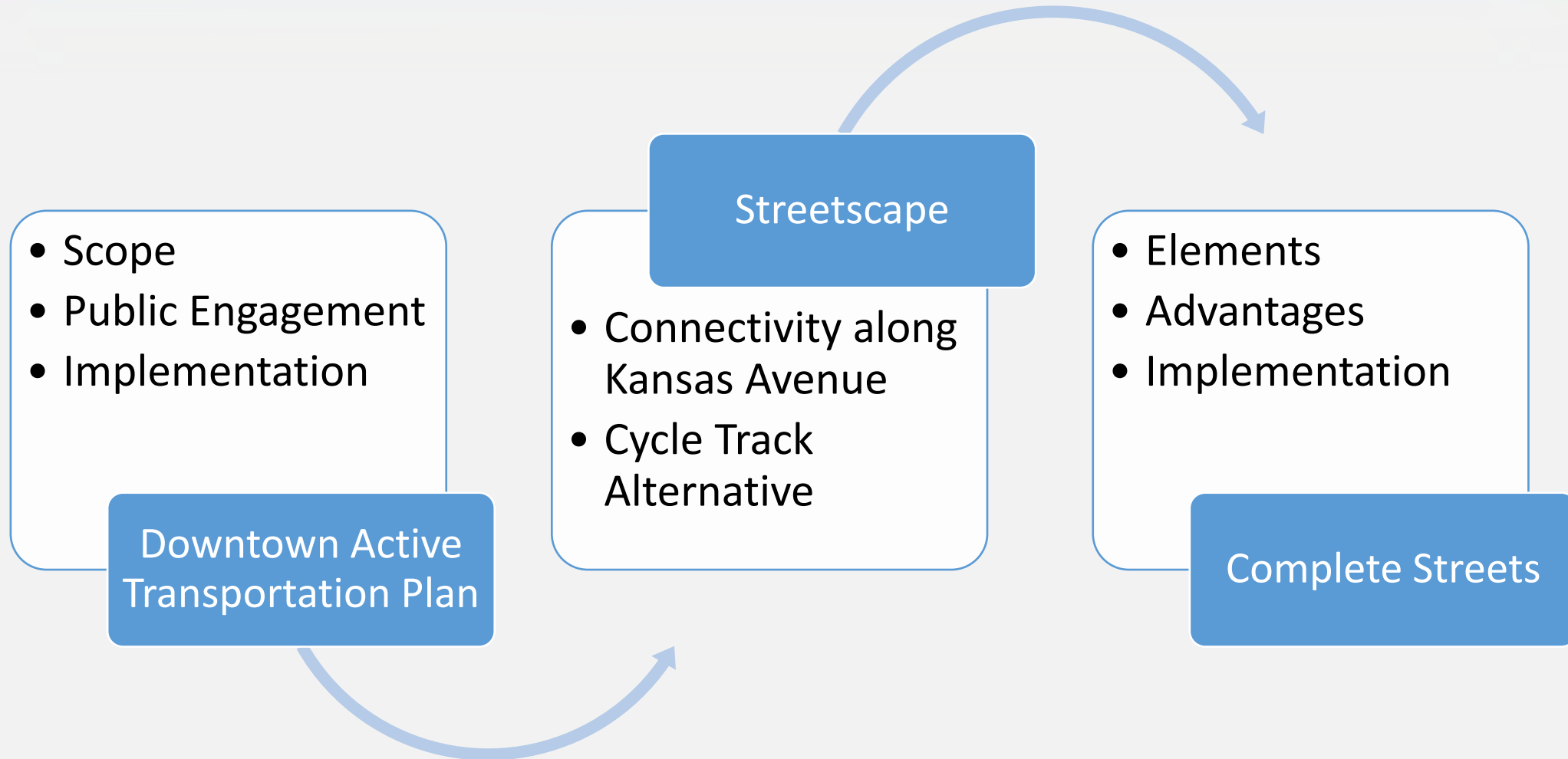


# **Downtown Active Transportation Plan, Streetscape and Complete Streets Policy Presentation**

Chet Belcher, P.E.,  
Transportation Manager  
April 21, 2020

# Plans and Potential Guidance



# History



- 2017 - Transportation Master Plan
- 2018 - Envision Olathe Downtown Plan
- 2019 - Olathe 2040 Future Ready
- 2019 - Direction Finder Priorities



# History



- 2017 - Transportation Master Plan
- 2018 - Envision Olathe Downtown Plan
- 2019 - Olathe 2040 Future Ready
- 2019 - Direction Finder Priorities

# History



- 2017 - Transportation Master Plan
- 2018 - Envision Olathe Downtown Plan
- 2019 - Olathe 2040 Future Ready
- 2019 - Direction Finder Priorities

# History

## Traffic Flow/Congestion Management

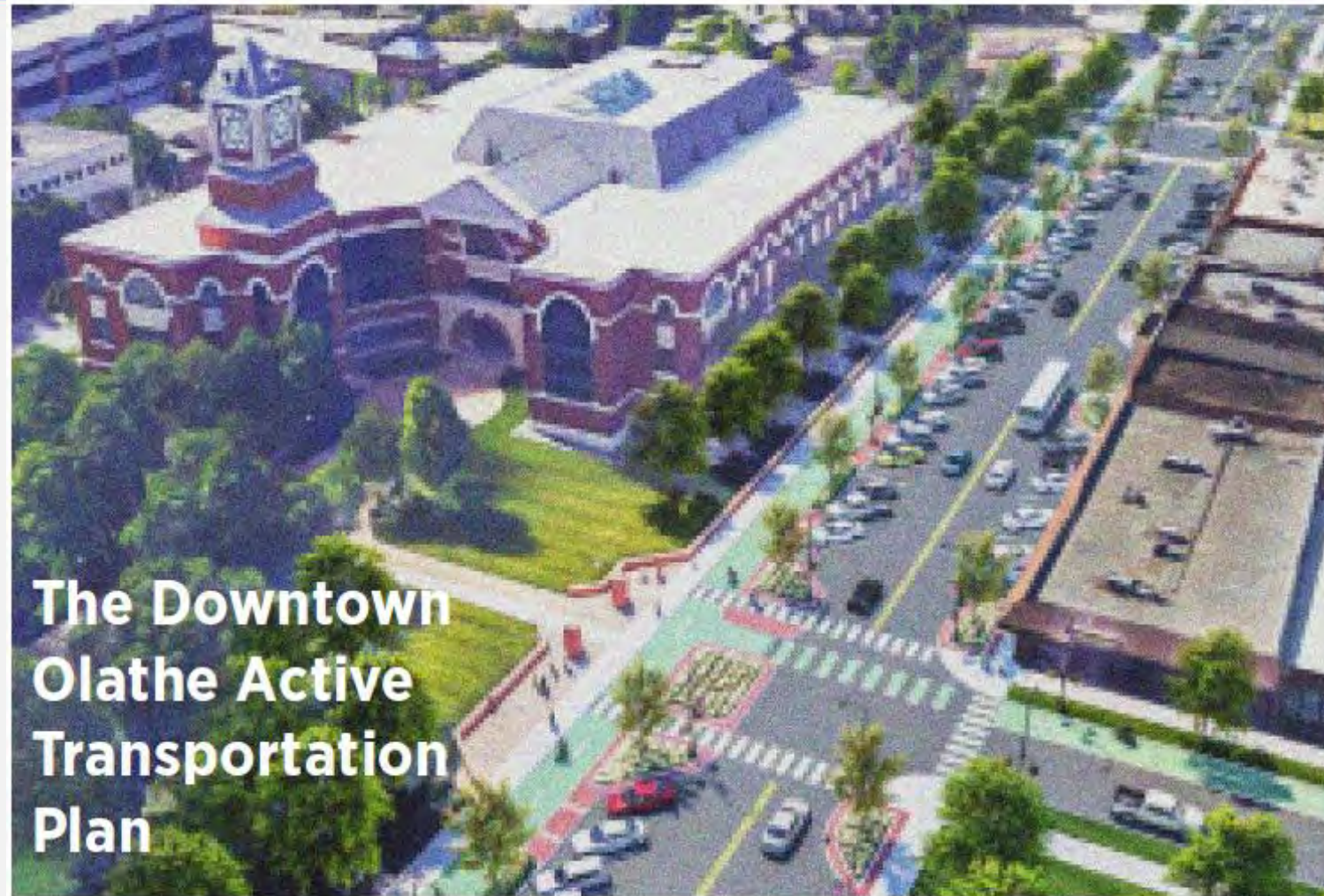
	<u>1<sup>st</sup></u>	<u>2<sup>nd</sup></u>	<u>3<sup>rd</sup></u>
Q1-19	Ease of Travel by Car	Ease of East/West Travel	Ease of North/South Travel
Q2-19	Ease of East/West Travel	Ease of North/South Travel	
Q3-19	Ease of Travel by Car	Ease of East/West Travel	
Q4-19	Ease of East/West Travel	Ease of Travel by Car	Ease of Pedestrian Travel

- 2017 - Transportation Master Plan
- 2018 - Envision Olathe Downtown Plan
- 2019 - Olathe 2040 Future Ready
- 2019 - Direction Finder Priorities



# Downtown Active Transportation Plan

- Scope
  - Identify network for connecting downtown to amenities throughout the City
  - Conceptual design and cost estimates at 23 locations
  - Integration with CIP and development projects
  - Complete Streets guidelines





# Network



**Proposed Projects**



# Partners

- \$60k Grant
- \$15k City of Olathe
- Project Management and Administration

- Parks and Rec
- Police & Fire
- Stormwater
- Legal
- Planning & Commission
- Library

MARC

Internal Stakeholders

Downtown Organizations

Residents

- DOBA
- Johnson County
- Lane 4
- Milhaus

- Public Meetings
- Online Survey
- Local Events
- Media

# Integration with CIP Projects – New library and Mill Creek stormwater project



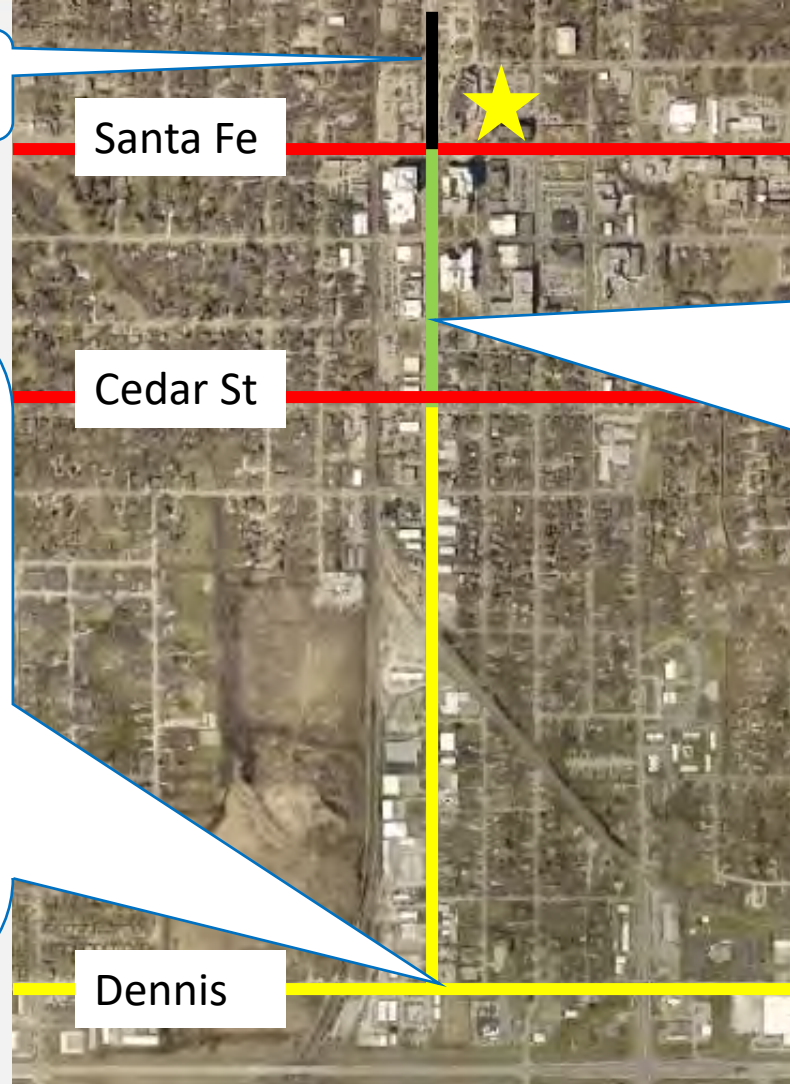


# Existing Connectivity along Kansas Avenue

10' Shared Use Path with JCCH project



Double Bike Lanes



Santa Fe

Cedar St

Dennis

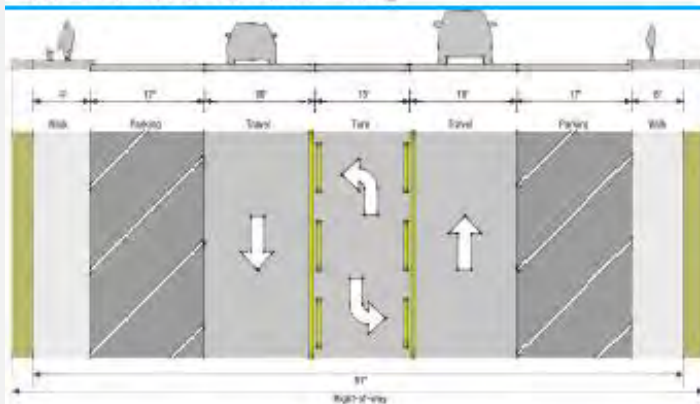


Traditional On-street bicycle with 4' pedestrian sidewalk

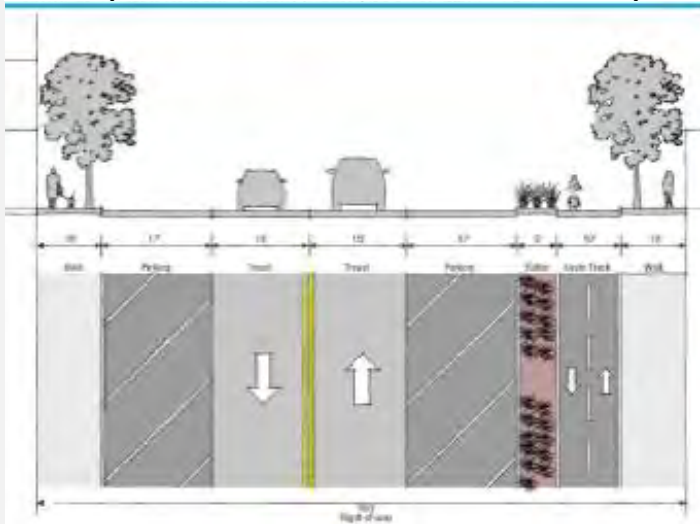


# Proposed Kansas Avenue Streetscape

Existing KS Avenue



Proposed KS Avenue Streetscape



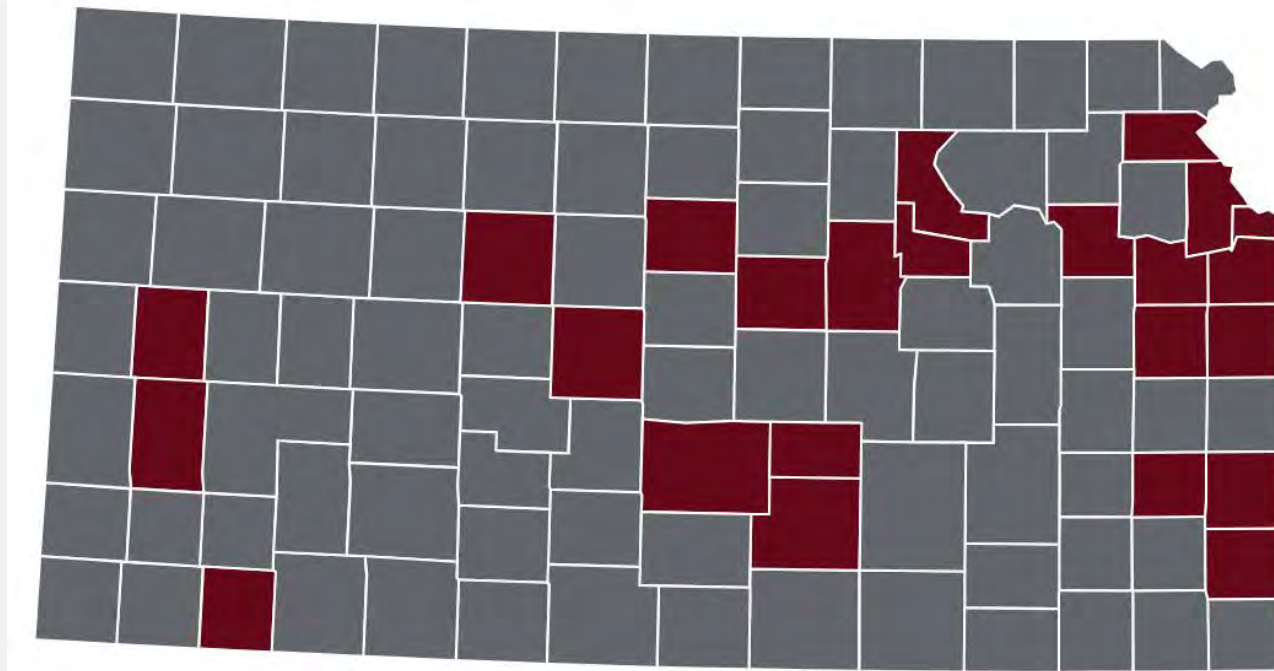


# Complete Streets



- Elements and Considerations
  - Safe and Convenient Vehicular, bicycle and pedestrian access
  - Beautification and landscaping
  - Public transportation access
- MARC Project Prioritization Scoring
  - Transportation Alternatives
  - Healthy Neighborhoods
  - Connected KC 2050 Projects
  - CMAQ
- Implementation and Collaboration

# Adopted Complete Streets Guidelines



- State of Kansas Resolution No. 1805
- KC Metro Cities and Counties
  - **Kansas** - Overland Park, Lenexa, Roeland Park, Leawood, UG, Johnson County
  - **Missouri** - Kansas City, Belton, Blue Springs, Grandview, Independence, Lee's Summit, Jackson County



# Next Steps

- May 5<sup>th</sup> City Council Meeting
  - Report on Complete Streets
  - Adopt Active Transportation Plan
- May 19<sup>th</sup> Adopt Complete Streets Guidelines