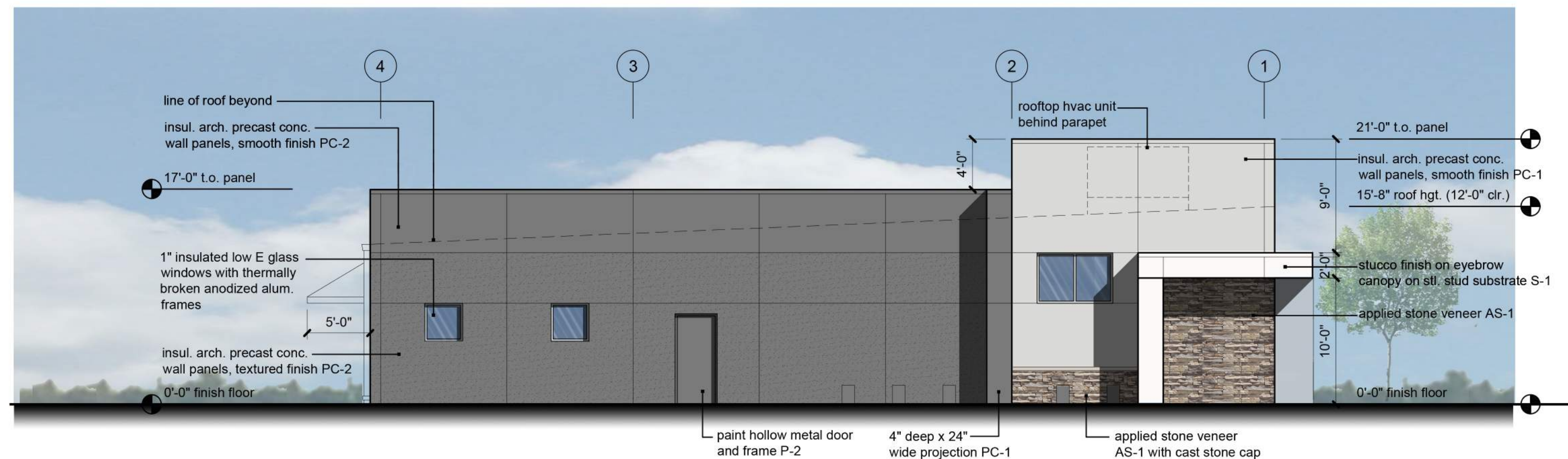
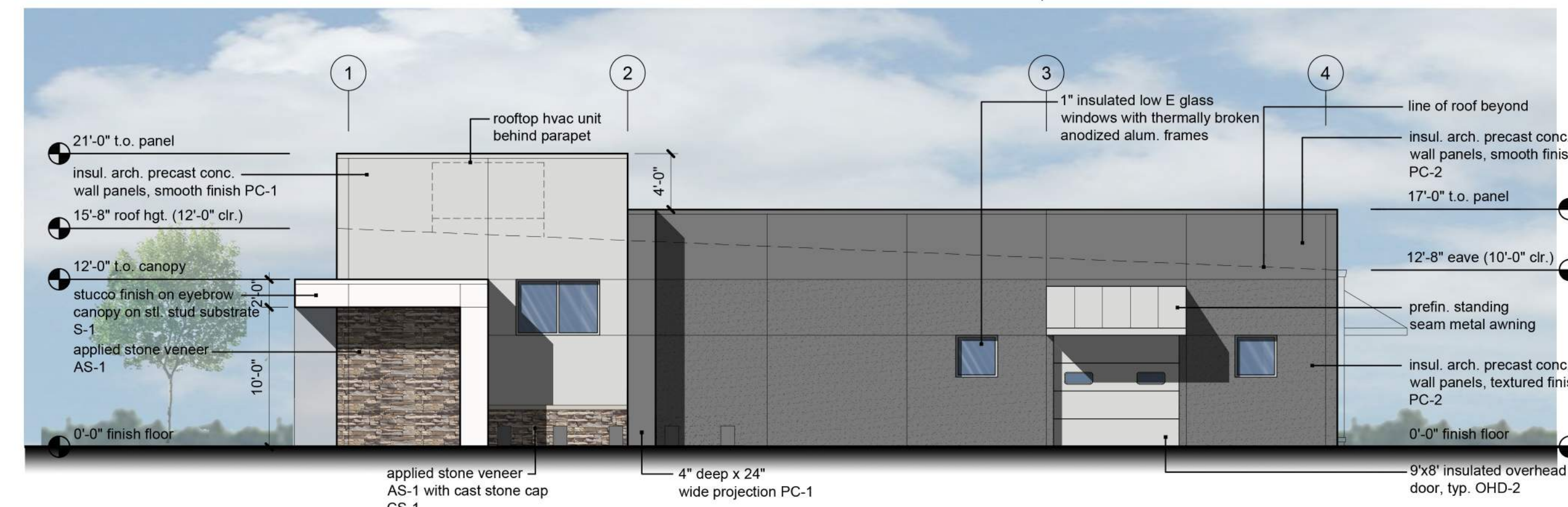


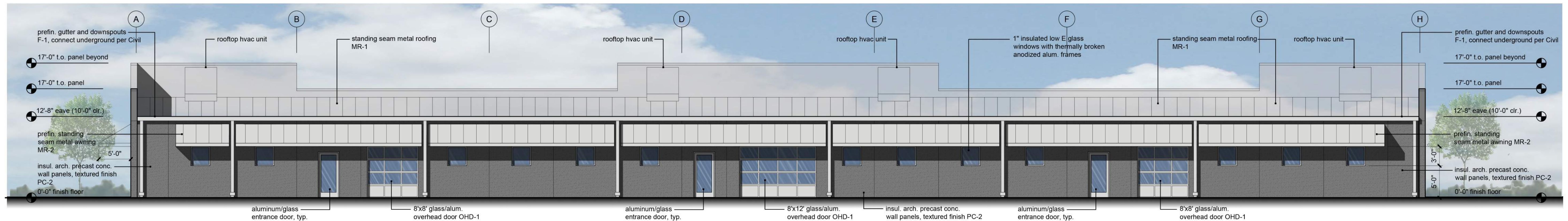
1 West Elevation
scale: 1/8" = 1'-0"



3 North Elevation
scale: 1/8" = 1'-0"



2 South Elevation
scale: 1/8" = 1'-0"



4 East Elevation
scale: 1/8" = 1'-0"

primary facade - west

material	area	% of wall area
architectural quality precast conc. panels, class 1	1814 sf	47%
integral color		
clear glass in alum. frame curtainwall, class 1	664 sf	17%
stucco, genuine, class 1	104 sf	3%
stone veneer, synthetic, class 1	493 sf	13%
precast conc. panels, painted, class 3 (dark gray)	760 sf	20%
total wall area:	3835 sf	100%

UDO requirements: 2 materials from class 1 or comb. 2 materials from class 1 and 2 with no less than 75% of facade, with 15% min. clear glass

West primary facade has 80% class 1 materials, including 17% clear glass

secondary facade - east

material	area	% of wall area
architectural quality precast conc. panels, class 1	1338 sf	52%
integral color		
clear glass in alum. frame curtainwall, class 1	404 sf	16%
standing seam metal awning, class 1	640 sf	25%
metal trim, class 4	181 sf	7%
total wall area:	2563 sf	100%

UDO requirements: 2 materials from class 1 or comb. 2 materials from class 1, 2 or 3 with no less than 40% of facade

east facade has 93% class 1 materials

secondary facade - north

material	area	% of wall area
architectural quality precast conc. panels, class 1	1079 sf	83%
integral color		
clear glass in alum. frame curtainwall, class 1	42 sf	3%
stucco, genuine, class 1	42 sf	3%
stone veneer, synthetic, class 1	118 sf	9%
metal door/frame, class 4	21 sf	2%
total wall area:	1302 sf	100%

UDO requirements: 2 materials from class 1 or comb. 2 materials from class 1, 2 or 3 with no less than 40% of facade

north facade has 98% class 1 materials

secondary facade - south

material	area	% of wall area
architectural quality precast conc. panels, class 1	993 sf	77%
integral color		
clear glass in alum. frame curtainwall, class 1	42 sf	3%
stucco, genuine, class 1	42 sf	3%
stone veneer, synthetic, class 1	118 sf	9%
standing seam metal awning, class 1	35 sf	3%
prefinished overhead door, class 4	72 sf	5%
total wall area:	1302 sf	100%

UDO requirements: 2 materials from class 1 or comb. 2 materials from class 1, 2 or 3 with no less than 40% of facade

south facade has 95% class 1 materials

exterior materials and finishes:

pre-cast concrete architectural panels	
PC-1	light gray integral color, match SW7071 Gray Screen
PC-2	dark gray integral color, match SW7074 Software
exterior paint:	
P-1	Sherwin Williams SW7071 Gray Screen
P-2	Sherwin Williams SW7074 Software
applied stone veneer:	
AS-1	Eldorado Stone, Stacked Stone pattern, color Alderwood or equal
cast stone:	
CS-1	Midwest Cast Stone, color: 1A or equal
stucco finish eyebrow canopy:	
S-1	fine finish, color: white
storefront/windows:	
	anodized aluminum frame, color: clear
glass:	
GL-1	1" insulated clear glass with low-E coating and argon fill
	*use SOLARBAN 60 as basis
coping, gutters and downspouts:	
F-1	prefinished 24 ga., color: Firestone Cityscape or equal
metal entrance canopy:	
MC-1	prefinished, color: Mapes White or equal
Standing seam metal roofing:	
MR-1	prefinished, color: galvalume finish
Standing seam metal canopy:	
MR-2	prefinished, color: Firestone Cityscape or equal
hollow metal doors and frames:	
P-2	paint color SW7074 Software
overhead doors:	
OHD-1	glass and aluminum
OHD-2	prefinished metal, light gray

UDO category 10 Industrial Buildings compliance:

- Building Facade Treatment
- Building Entry - a 27' wide x 5' deep prefinished metal canopy projects from the facade.
 - Overhead Doors - no overhead doors face the public street.
 - Windows - primary west facade has 17% clear glass, exceeds UDO minimum.
 - Facade Articulation - the 200' long primary west facade is divided into 5 vertical bays - two end bays, one center bay and 2 bays that separate the center and end bays from each other. The building is "bookended" with vertical articulation at both ends, and at the center where the main building entrance is located.

One facade articulation technique is required for each of the following categories:

- Horizontal Articulation:
Wall projection is the selected technique. Each bay is separated with a 4" x 24" wide vertical projection from the wall, full height of the facade.
- Vertical Articulation:
Variation in height is the selected technique. The parapet is raised 4' at the ends and center bays.

Exterior building materials (see facade information this sheet).

Roofing Materials - project is using class 1 standing seam metal roofing, prefinished vertically run panels with interlocking raised seams.

notes:

- All signage is approved administratively through a separate application.

a new development for

K-9 Acres

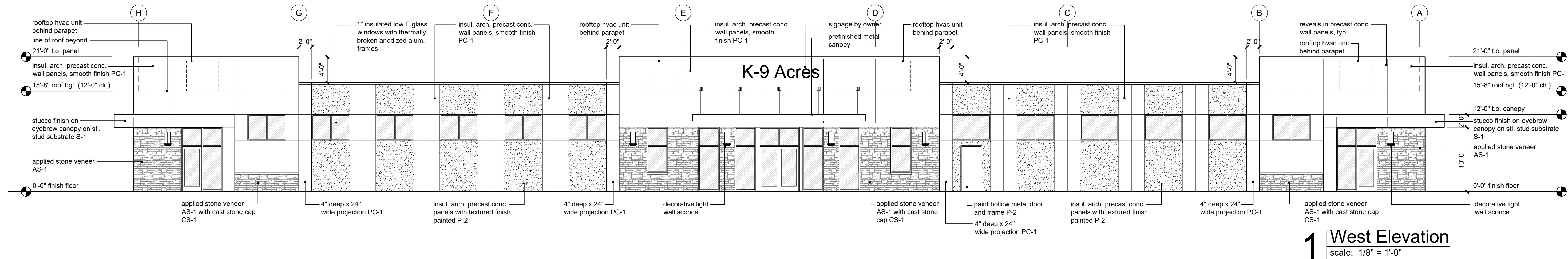
16129 S. Lone Elm Road
Olathe, Kansas

date 05.15.2020
drawn by DAE
checked by DAE
revisions

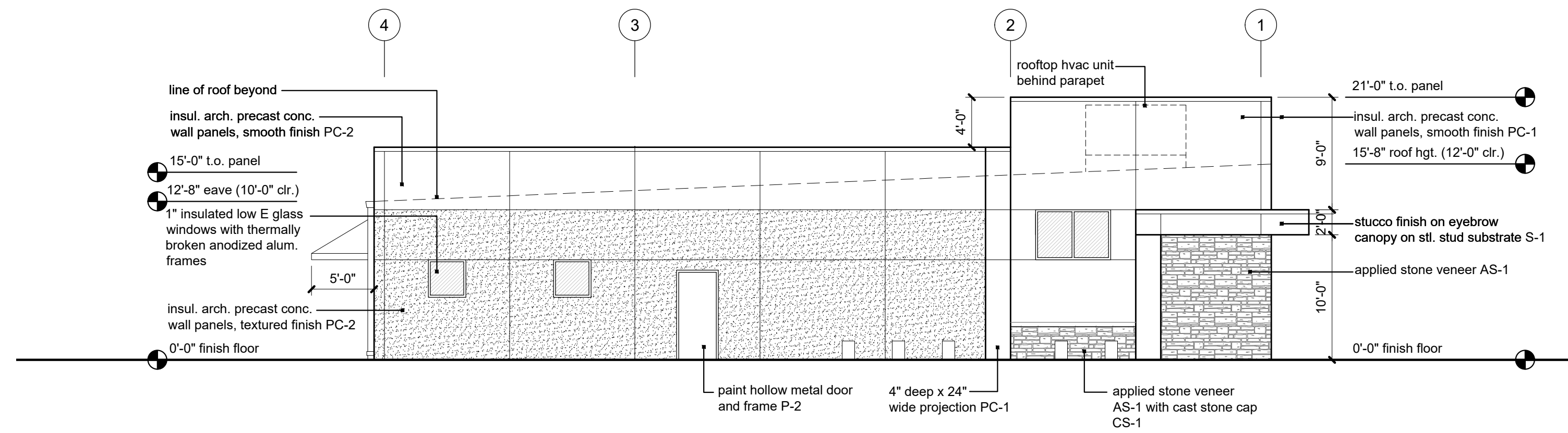
sheet number

A3.1

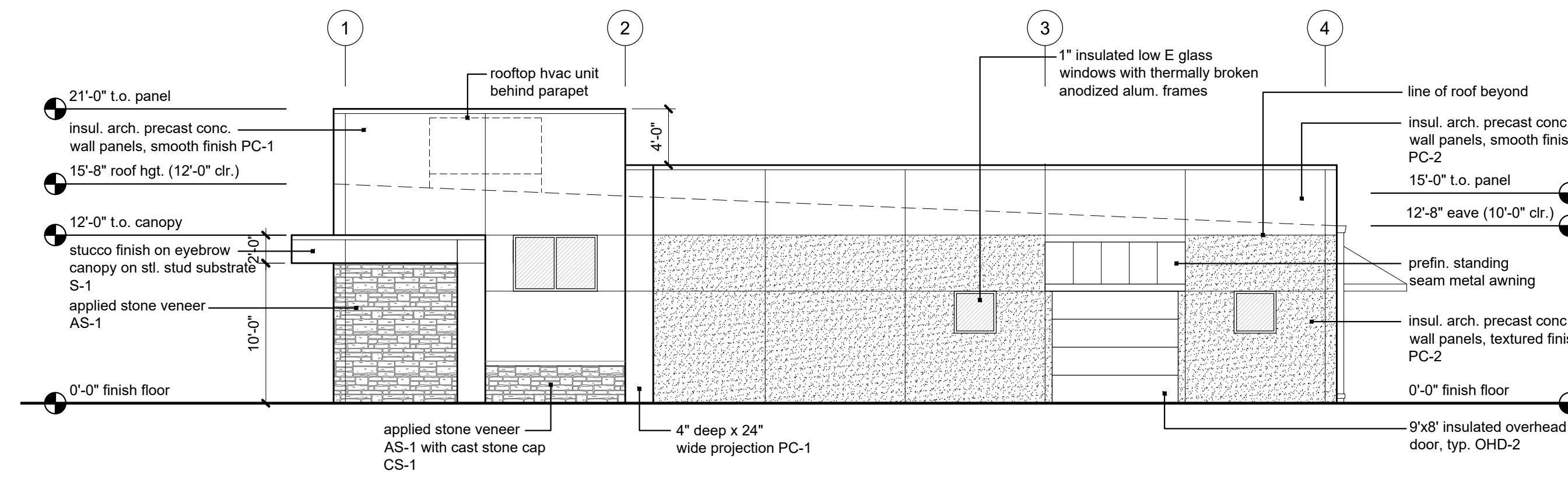
drawing type preliminary
project number 20057



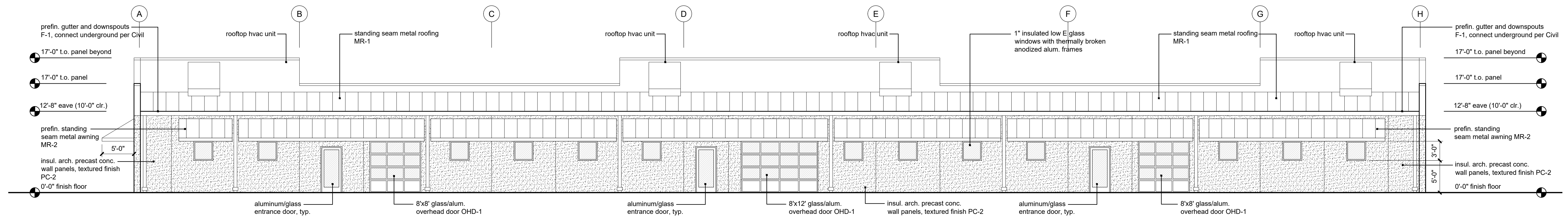
1 West Elevation
scale: 1/8" = 1'-0"



3 North Elevation
scale: 1/8" = 1'-0"



2 South Elevation
scale: 1/8" = 1'-0"



4 East Elevation
scale: 1/8" = 1'-0"

primary facade - west

material	area	% of wall area
architectural quality precast conc. panels, class 1	1814 sf	47%
integral color		
clear glass in alum. frame curtainwall, class 1	664 sf	17%
stucco, genuine, class 1	104 sf	3%
stone veneer, synthetic, class 1	493 sf	13%
precast conc. panels, painted, class 3 (dark gray)	780 sf	20%
total wall area:	3835 sf	100%

UDO requirements: 2 materials from class 1 or comb. 2 materials from class 1 and 2 with no less than 75% of facade, with 15% min. clear glass

West primary facade has 80% class 1 materials, including 17% clear glass

secondary facade - east

material	area	% of wall area
architectural quality precast conc. panels, class 1	1338 sf	52%
integral color		
clear glass in alum. frame curtainwall, class 1	404 sf	16%
standing seam metal awning, class 1	640 sf	25%
metal trim, class 4	181 sf	7%
total wall area:	2563 sf	100%

UDO requirements: 2 materials from class 1 or comb. 2 materials from class 1, 2 or 3 with no less than 40% of facade

east facade has 93% class 1 materials

secondary facade - north

material	% of wall area
architectural quality precast conc. panels, class 1	1079 sf 83%
integral color	
clear glass in alum. frame curtainwall, class 1	42 sf 3%
stucco, genuine, class 1	42 sf 3%
stone veneer, synthetic, class 1	118 sf 9%
metal door/frame, class 4	21 sf 2%
total wall area:	1302 sf 100%

UDO requirements: 2 materials from class 1 or comb. 2 materials from class 1, 2 or 3 with no less than 40% of facade

north facade has 98% class 1 materials

secondary facade - south

material	% of wall area
architectural quality precast conc. panels, class 1	993 sf 77%
integral color	
clear glass in alum. frame curtainwall, class 1	42 sf 3%
stucco, genuine, class 1	42 sf 3%
stone veneer, synthetic, class 1	118 sf 9%
standing seam metal awning, class 1	35 sf 3%
prefinished overhead door, class 4	72 sf 5%
total wall area:	1302 sf 100%

UDO requirements: 2 materials from class 1 or comb. 2 materials from class 1, 2 or 3 with no less than 40% of facade

south facade has 95% class 1 materials

exterior materials and finishes:

pre-cast concrete architectural panels	
PC-1	light gray integral color, match SW7071 Gray Screen
PC-2	dark gray integral color, match SW7074 Software
exterior paint:	
P-1	Sherwin Williams SW7071 Gray Screen
P-2	Sherwin Williams SW7074 Software
applied stone veneer:	
AS-1	Eldorado Stone, Stacked Stone pattern, color Alderwood or equal
cast stone:	
CS-1	Midwest Cast Stone, color: 1A or equal
stucco finish eyebrow canopy:	
S-1	fine finish, color: white
storefront/windows:	
	anodized aluminum frame, color: clear
glass:	
GL-1	1" insulated clear glass with low-E coating and argon fill *use SOLARBAN 60 as basis
copings, gutters and downspouts:	
F-1	prefinished 24 ga., color: Firestone Cityscape or equal
metal entrance canopy:	
MC-1	prefinished, color: Mapes White or equal
Standing seam metal roofing:	
MR-1	prefinished, color: galvalume finish
Standing seam metal canopy:	
MR-2	prefinished, color: Firestone Cityscape or equal
hollow metal doors and frames:	
P-2	paint color SW7074 Software
overhead doors:	
OHD-1	glass and aluminum
OHD-2	prefinished metal, light gray

UDO category 10 Industrial Buildings compliance:

- Building Facade Treatment
- Building Entry - a 27' wide x 5' deep prefinished metal canopy projects from the facade.
 - Overhead Doors - no overhead doors face the public street.
 - Windows - primary west facade has 17% clear glass, exceeds UDO minimum.
 - Facade Articulation - the 200' long primary west facade is divided into 5 vertical bays - two end bays, one center bay and 2 bays that separate the center and end bays from each other. The building is "bookended" with vertical articulation at both ends, and at the center where the main building entrance is located.

One facade articulation technique is required for each of the following categories:

- Horizontal Articulation:
Wall projection is the selected technique. Each bay is separated with a 4" x 24" wide vertical projection from the wall, full height of the facade.
- Vertical Articulation:
Variation in height is the selected technique. The parapet is raised 4' at the ends and center bays.

Exterior building materials (see facade information on this sheet).

Roofing Materials - project is using class 1 standing seam metal roofing, prefinished vertically run panels with interlocking raised seams.

notes:

- All signage is approved administratively through a separate application.

a new development for

K-9 Acres

16129 S. Lone Elm Road
Olathe, Kansas

date 05.15.2020
drawn by DAE
checked by DAE
revisions




sheet number

A3.1

drawing type

preliminary

project number
20057

1 | **Floor Plan** | 
scale: 3/32" = 1'-0" | north

drawing type
preliminary
project number
20057