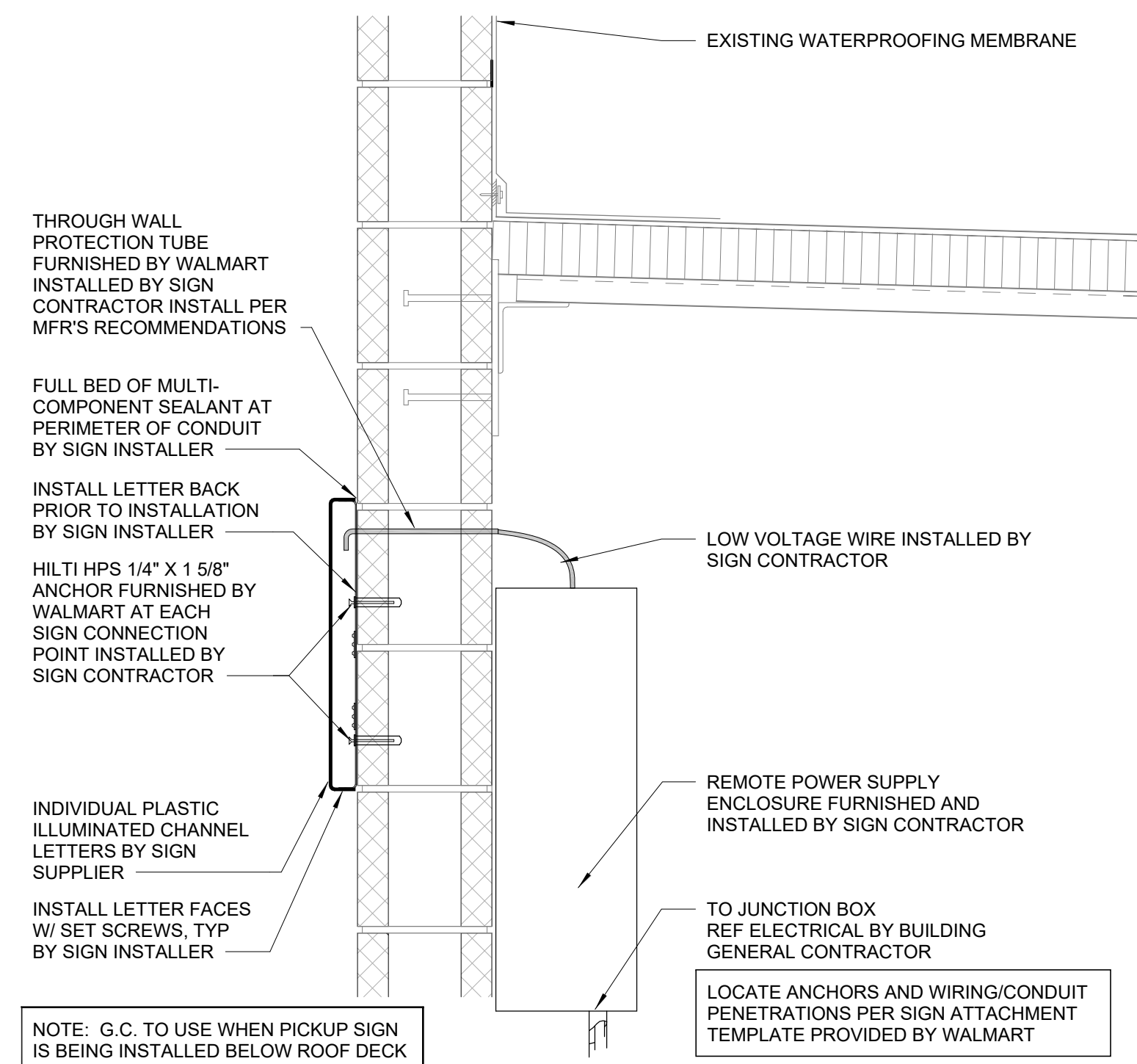




SIGNAGE GENERAL NOTES

1. SIGNAGE FURNISHED BY WAL-MART AND INSTALLED BY OTHERS.
2. ALL EXISTING WALDMART EXTERIOR SIGNAGE IS TO REMAIN IN PLACE ON THE EXISTING SIGNAGE UNTIL THE NEW SIGNAGE IS INSTALLED. THE CONTRACTOR/COMPANY WILL REMOVE EXISTING SIGNAGE AND INSTALL NEW SIGNAGE. ONCE NEW SIGNAGE IS INSTALLED, GENERAL CONTRACTOR WILL PERFORM PAINT, REPAIR, AND MAINTENANCE NECESSARY TO THE SIGNAGE. SIGNAGE IS INSTALLED AS FOLLOWS:
 - A. FOR STORES THAT REQUIRE STRUCTURAL MODIFICATIONS OR REPAIRS FOR INSTALLATION OF NEW EXTERIOR SIGNAGE, A TEMPORARY BANNER WILL BE INSTALLED BY THE CONTRACTOR/COMPANY UNTIL THE SIGNAGE IS INSTALLED. EXISTING EXTERIOR SIGNAGE, BANNER WILL REMAIN IN PLACE UNTIL ALL MODIFICATIONS AND REPAIRS ARE COMPLETED. THE CONTRACTOR/COMPANY IS TO REMOVE ALL SIGNS. GC SHALL PRIORITIZE MODIFICATIONS/REPAIRS REQUIRED FOR INSTALLATION OF NEW EXTERIOR SIGNS WHILE EXTERIOR SIGN COMPANY IS ON SITE.
 - B. TEMPORARY BANNER WILL BE ADVERTISED FOR 30 DAYS (30X25).
 - C. EXTERIOR SIGN WORK NEEDS TO BE SCHEDULED, COORDINATED, AND COMPLETED DURING WEEK 6 OF THE CONSTRUCTION SCHEDULE.
3. GENERAL CONTRACTOR SHALL BE RESPONSIBLE FOR THE FOLLOWING:
 - A. REMOVE EXISTING EXTERIOR BUILDING SIGNAGE AS NOTED ON SHEET A2. (LIGHTED DILOGO SIGNS WILL BE REMOVED BY OTHERS).
 - B. REMOVE ALL FIRST FLOOR EXTERIOR BUILDING SIGNAGE (EXISTING CONSTRUCTION WHERE SIGNS) WILL BE INSTALLED. IF EXISTING CONDITIONS DO NOT MATCH SIGN ATTACHMENT DETAILS SHOWN, REQUEST APPROVAL FROM CONTRACTOR/COMPANY TO SUBMIT TO THE ARCHITECT FOR REVIEW. THE CONTRACTOR/COMPANY DIFFERENCES IN CONSTRUCTION, INCLUDING DIMENSIONS, AND INCLUDE PHOTOGRAPHS OF THE EXISTING CONDITIONS.
 - C. PROVIDE SUBSTRATE SUITABLE FOR INSTALLATION OF SIGNAGE. REFER TO DETAILS ON SHEET A2.1 FOR LIGHTED DILOGO SIGNS. COORDINATE TIMING OF SIGNAGE WITH WALDMART.
 - D. PROVIDE JUNCTION BOXES AND CIRCUITRY TO NEW "Wal-Mart" and "spark" SIGNAGE. EXISTING (BY BOXES FROM "WAL-MART" SIGNAGE) MAY BE REUSED. THE CONTRACTOR/COMPANY SHALL BE RESPONSIBLE TO TENDR SIGNAGE LOCATIONS SHOWN. REFER TO ELECTRICAL.
 - E. INSTALL ACCESS DOORS AND FRAMES TO ALUMINUM SIGNAGE CEILING IF REQUIRED.
 - F. VERIFY VOLTAGE AT CIRCUITS FEEDING LIGHTED SIGNAGE. REFER TO ELECTRICAL.
 - G. MAKE FINAL TERMINATIONS ON LIGHTED SIGNAGE.
4. SIGNAGE CONTRACTOR RESPONSIBILITIES:
 - A. REMOVE ALL LIGHTING AND SIGNAGE UNLESS OTHERWISE SPECIFIED.
 - B. FURNISH SPECIFIED CONDUIT FOR LIGHTED SIGNAGE.
 - C. MAKE REQUIRED EXTERIOR WALL PENETRATIONS, INSTALL CONDUIT, AND SEAL PENETRATIONS TO MEET THE REQUIREMENTS OF THE UL780.
 - D. INSTALL SIGNAGE PER DETAILS ON SHEET A2.1.



EXISTING SIGNAGE SCHEDULE

(FOR REFERENCE ONLY)

SIGNAGE LOCATION	QTY	COLOR	SIZE	INDIVIDUAL AREA	TOTAL AREA
FRONT SIGNAGE					
WALMART (SPARK)	1	WHITE	5'-6"		SF
		YELLOW	8'-0"	288.00 SF	288.00 SF
MARKET	2	WHITE	2'-0"	17.97 SF	17.97 SF
HOME & PHARMACY	1	WHITE	2'-0"	61.85 SF	61.85 SF
OUTDOOR LIVING	1	WHITE	2'-0"	49.47 SF	49.47 SF
TOTAL FRONT SIGNAGE					427.29 SF
AUTO CENTER SIGNAGE					
AUTO CENTER	1	WHITE	2'-0"	31.47 SF	31.47 SF
TIRE	2	WHITE	1'-0"	2.38 SF	4.76 SF
LUBE	1	WHITE	1'-0"	3.13 SF	3.13 SF
TOTAL AUTO CENTER SIGNAGE					39.36 SF
PHARMACY DRIVE-THRU SIGNAGE					
PHARMACY DRIVE-THRU	1	WHITE	1'-0"	17.78 SF	17.78 SF
ENTER	1	WHITE	1'-0"	3.24 SF	3.24 SF
EXIT	1	WHITE	1'-0"	2.34 SF	2.34 SF
TOTAL PHARMACY DRIVE-THRU SIGNAGE					23.36 SF
TOTAL BUILDING SIGNAGE					490.01 SF

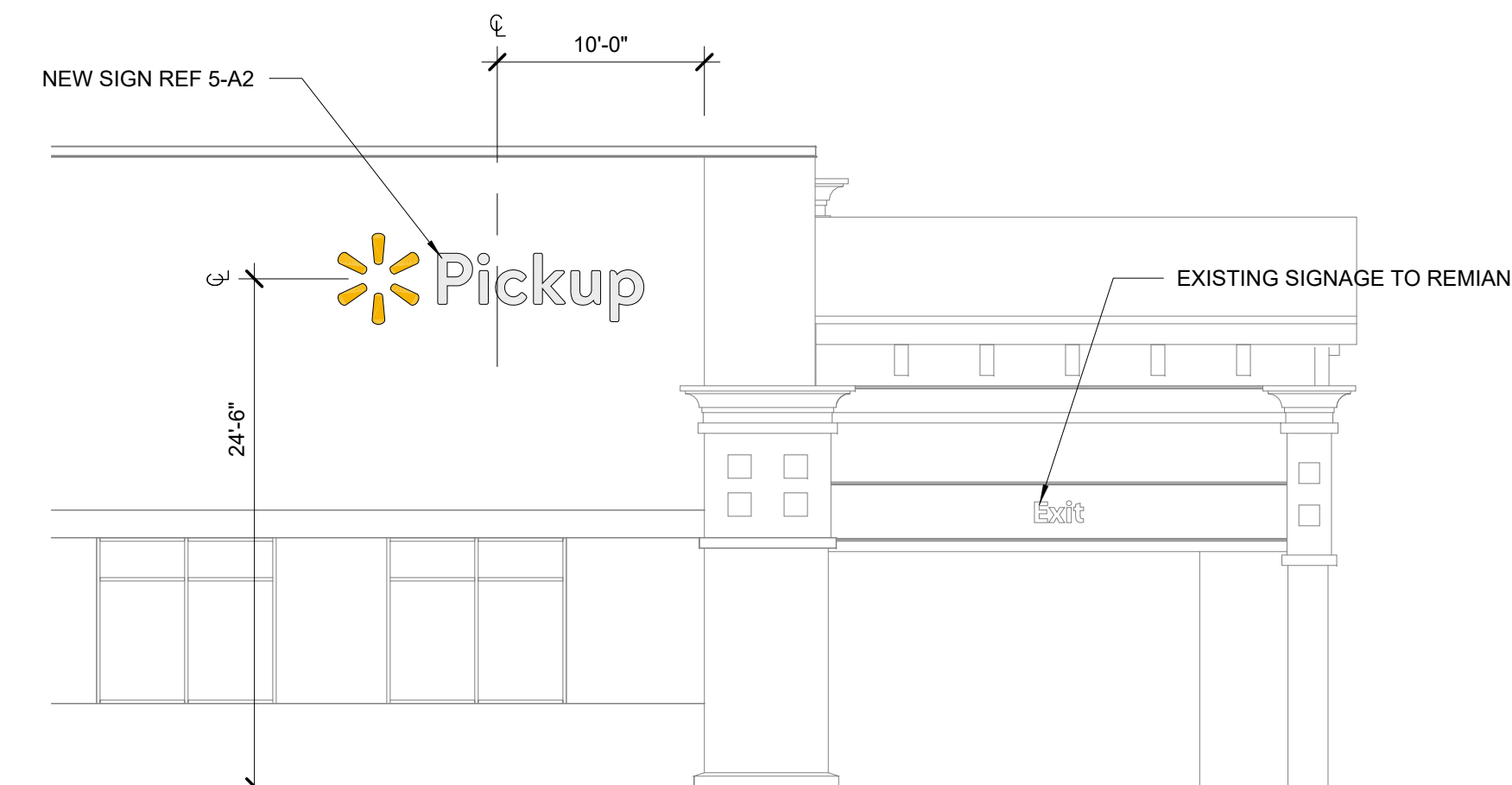
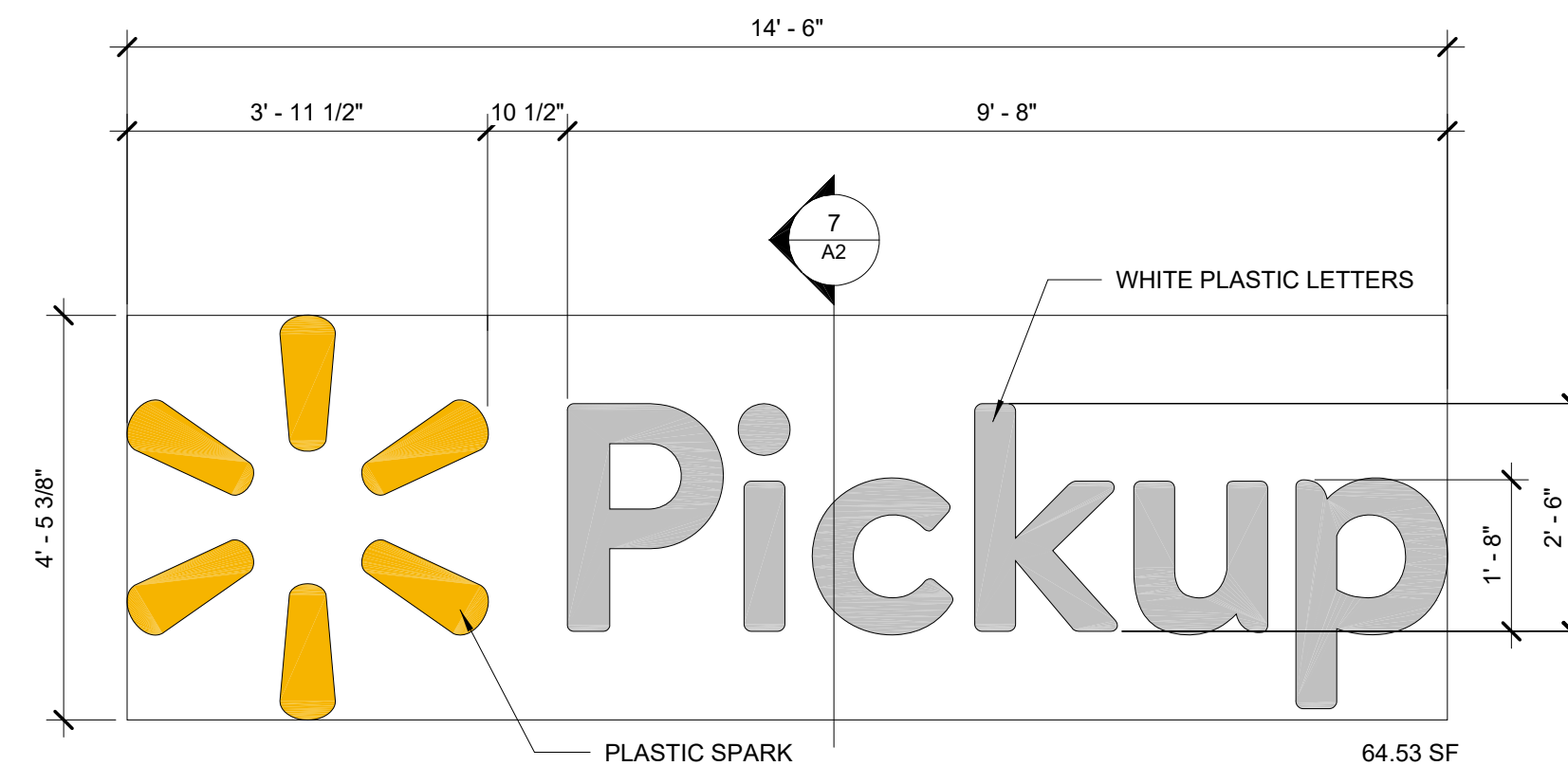
PROPOSED SIGNAGE SCHEDULE

(FOR REFERENCE ONLY)

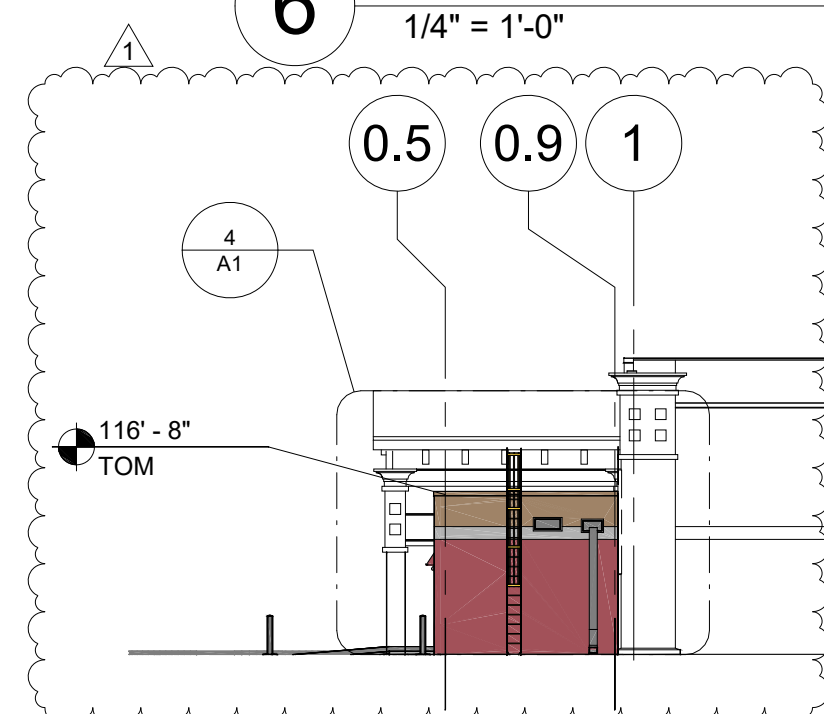
SIGNAGE LOCATION	QTY	COLOR	SIZE	INDIVIDUAL AREA	TOTAL AREA
FRONT SIGNAGE					
PICKUP (SPARK)	1	WHITE	2'-6"	64.53 SF	64.53 SF
		YELLOW	4'-5 3/8"		
TOTAL FRONT SIGNAGE					64.53 SF
TOTAL BUILDING SIGNAGE					554.54 SF
EXHIBIT C					

EXHIBIT C

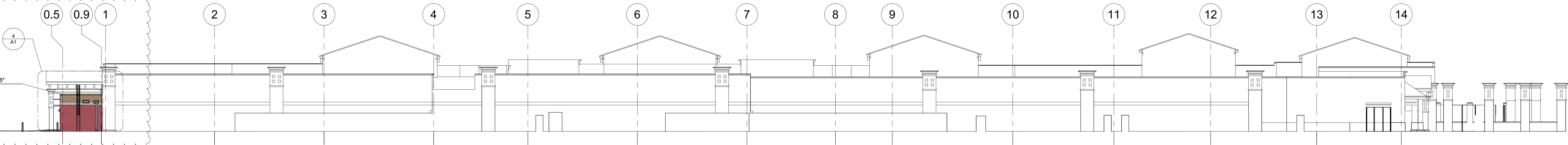
7 SIGNAGE ATTACHMENT



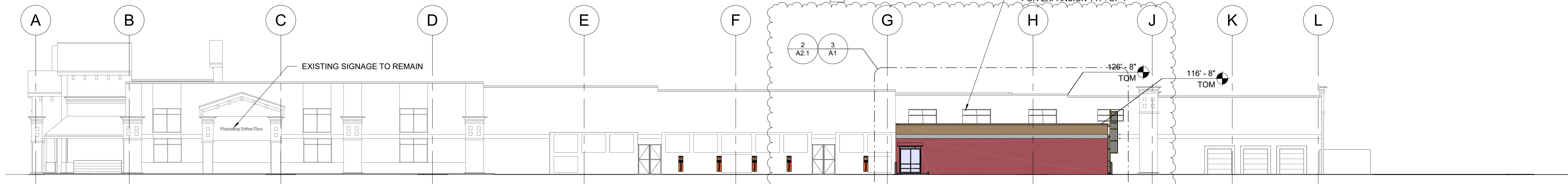
6 PICKUP SIGN MOUNTING DIAGRAM 2'-6"



5 BUILDING PICKUP SIGNAGE 2'-6"
1/2" = 1'-0"



3 REAR ELEVATION



2 RIGHT ELEVATION



1 FRONT ELEVATION
1" = 20'-0"



STIPULATION FOR REUSE

THIS DRAWING WAS PREPARED FOR USE ON A SPECIFIC SITE AT: LA THE (W), K5

CONTEMPORANEOUSLY WITH THIS ISSUANCE OF THIS DRAWING, THE USER OF THIS DRAWING FOR REFERENCE OR EXAMPLE ON ANOTHER PROJECT REQUIRES THE SERVICES OF PROPERLY LICENSED ARCHITECTS AND ENGINEERS. REPRODUCTION OF THIS DRAWING FOR REUSE ON ANOTHER PROJECT IS NOT ALLOWED AND MAY BE CAUSE TO TRIGGER THE LAW.

CONSULTANTS

[illegible]

CHECKED BY:	DTB
DRAWN BY:	TSR, MMG,ZMK
PROTO CYCLE:	12/20/19
DOCUMENT DATE:	1/24/20

IMPORTANT NOTICE:
THIS DRAWING SHALL
NOT BE USED FOR
CONSTRUCTION
UNLESS SEALED,
SIGNED AND DATED BY
THE LICENSEE IN
RESPONSIBLE CHARGE
(AOR/EOR).

**BUILDING
ELEVATIONS,
SIGNAGE
AND DETAILS**

SHEET: **A2**